

# Architectural Designs ...selling quality house plans for over 30 years.

Plan W59048ND: Quaint Square Log Home



House plans are Copyright © 2009 by our architects and designers.

- You are greeted with a lovely covered porch on this square shaped, but quaint log home plan.
- The living room provides warmth from a rock fireplace and is open to the kitchen and dining room, divided by a long kitchen island.
- French doors lead to the rear yard while a nearby laundry closet and half bath are step savers for the family.
- A whirlpool tub, corner shower and double vanities are available in the private bathroom of the master suite.
- Two additional bedrooms reside upstairs, each having a double window dormer and attic storage. The upstairs bathroom has a large linen closet and a bit of flair with its raised wooden floor.
- Ceilings: 8' standard.
- Foundation: Basement, crawl space, daylight basement. Please specify your preference when ordering.

Style: Log, Mountain

Total Living Area: 2043

Main Flr.: 1200

2nd Flr.: 843

Front Porch: 315 sq. ft.

Total Square Feet: 2,358 sq. ft.

Bedrooms: 3

Full Bathrooms: 2

Half Bathrooms: 1

Width: 40'

Depth: 37'10"

Maximum Ridge Height: 22'8"

Exterior Walls: Log

Ceiling Height:

Main Floor: 8'

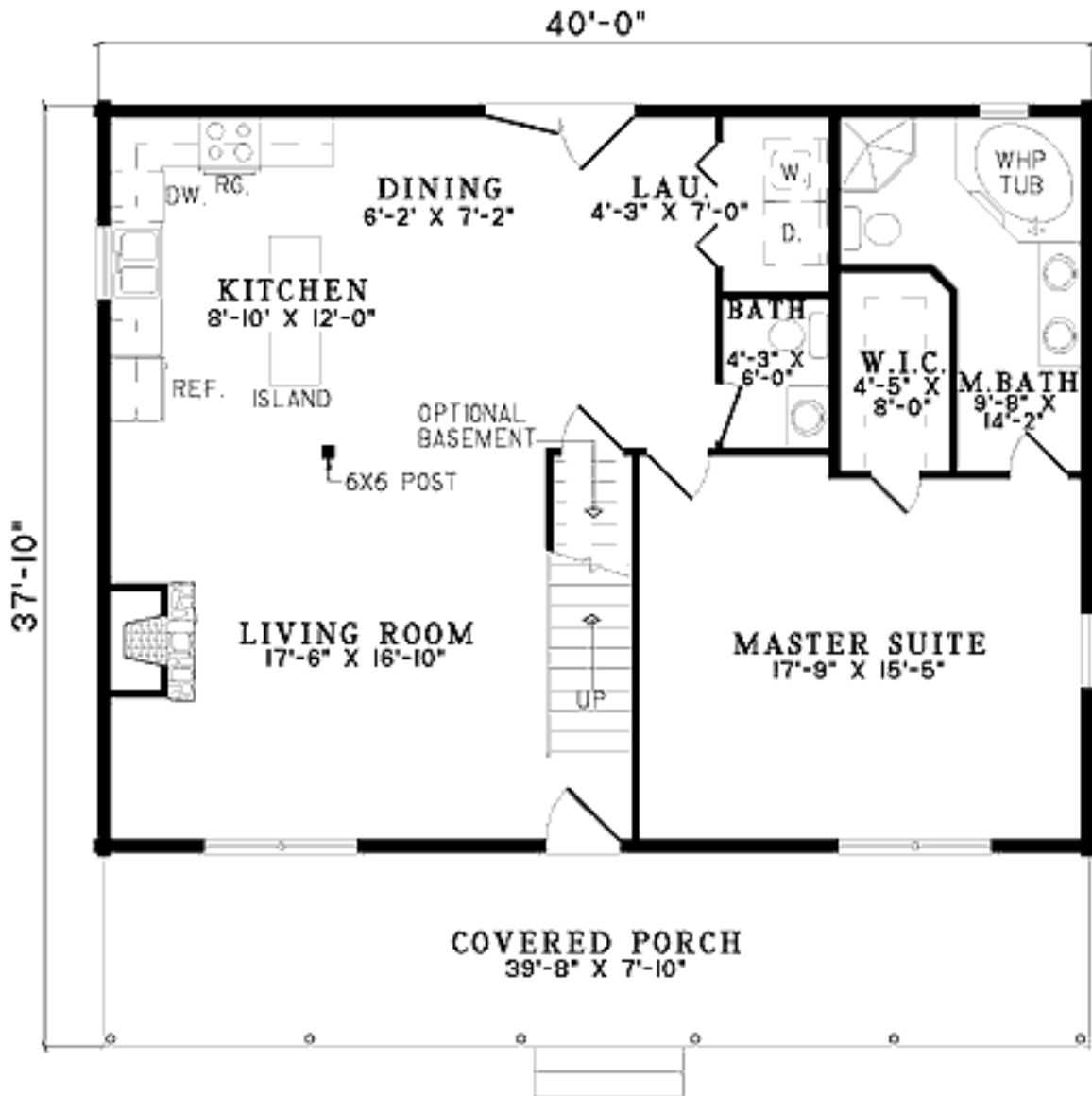
Standard Foundations: Daylight, Crawl

Alternate Foundations: Walkout (\$250), Basement (\$250)

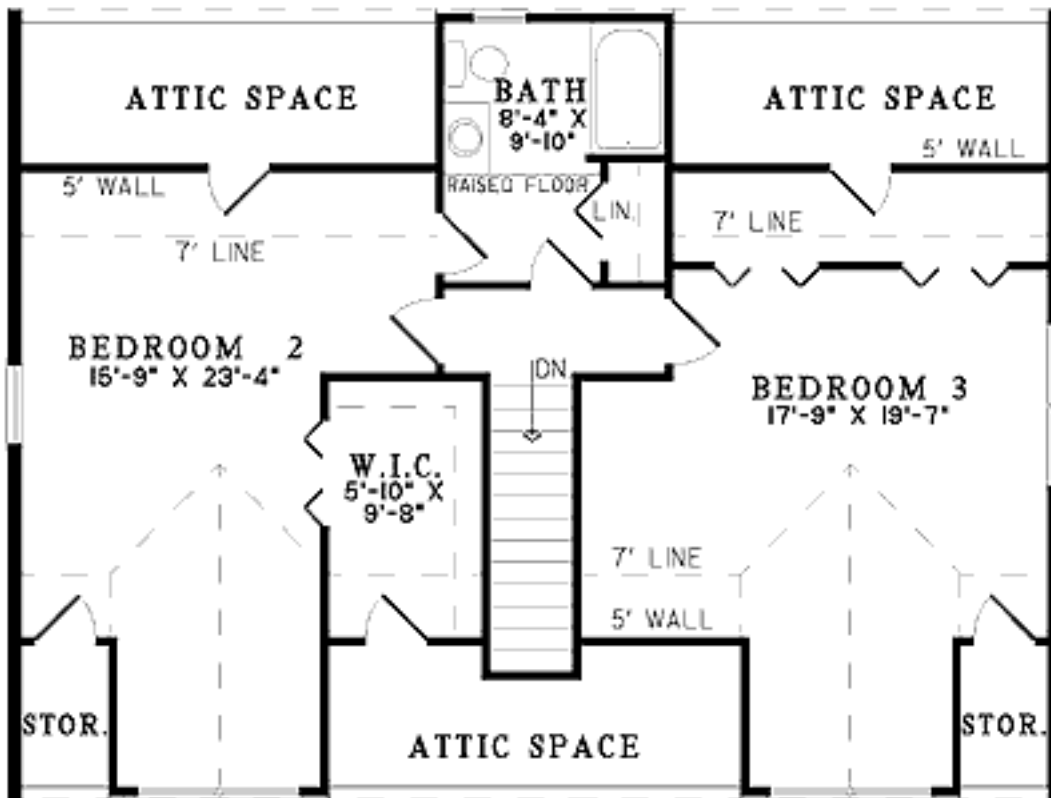
Special Features: PDF, Sloping Lot, Narrow Lot, 1st Floor Master Suite

One Set	Five Sets	Eight Sets	Reproducible	PDF File	CAD
\$545	\$610	\$640	\$790	\$790	\$1,350

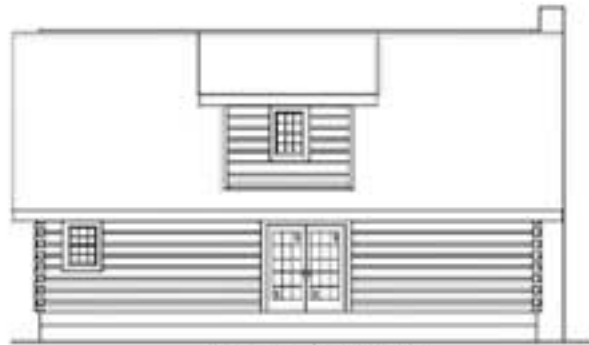
## Main Level



## 2nd Level



## Sides/Rear



Rear elevation



Left elevation



Right elevation