

Plan W24617GK: French Country Beauty



House plans are Copyright © 2009 by our architects and designers.

- This French Country beauty has beautiful lines and a popular master suite on the main floor.
- Step through the 12'-wide entry and glimpse the dining room with exposed beams and a door leading to a broad 46'-wide covered rear patio. A 2-sided fireplace divides this room from the living room with 14' ceilings.
- A private office is at the far left of the home and features a wraparound built-in desk. This can easily be converted into a guest room.
- The kitchen is expansive and has a large L-shaped walk-in pantry and an island with seating for casual meals.
- The master suite has patio access. Off the master bath you'll find his-and-hers walk-in closets and access to the laundry room.
- Upstairs you'll get 3 bedrooms including the bonus area off the landing.
- The garage has a 3-car option included with the plans.
- Related Plan: For a related version, see house plan 24606GK.

Style: European, French Country, Luxury, Premium Collection

Total Living Area: 2810

Main Flr.: 1940

2nd Flr.: 870

Bonus: 147 sq. ft.

Covered Patio: 415 sq. ft.

Total Square Feet: 4,107 sq. ft.

Attached Garage: 2 Car, 735 sq. ft.

Bedrooms: 4

Full Bathrooms: 2

Half Bathrooms: 1

Width: 78'4"

Depth: 77'

Maximum Ridge Height: 28'6"

Exterior Walls: 2x6

Ceiling Height:

Main Floor: 10'

2nd Floor: 9'

Other: 14' Coffered Living Room; 12' Coffered MBR

Standard Foundations: Slab

Alternate Foundations: Basement (\$400), Crawl (\$250)

Special Features: 1st Floor Master Suite, Butler Walk-in Pantry, Den-Office-Library-Study, Bonus Room, Photo Gallery, CAD Available, PDF

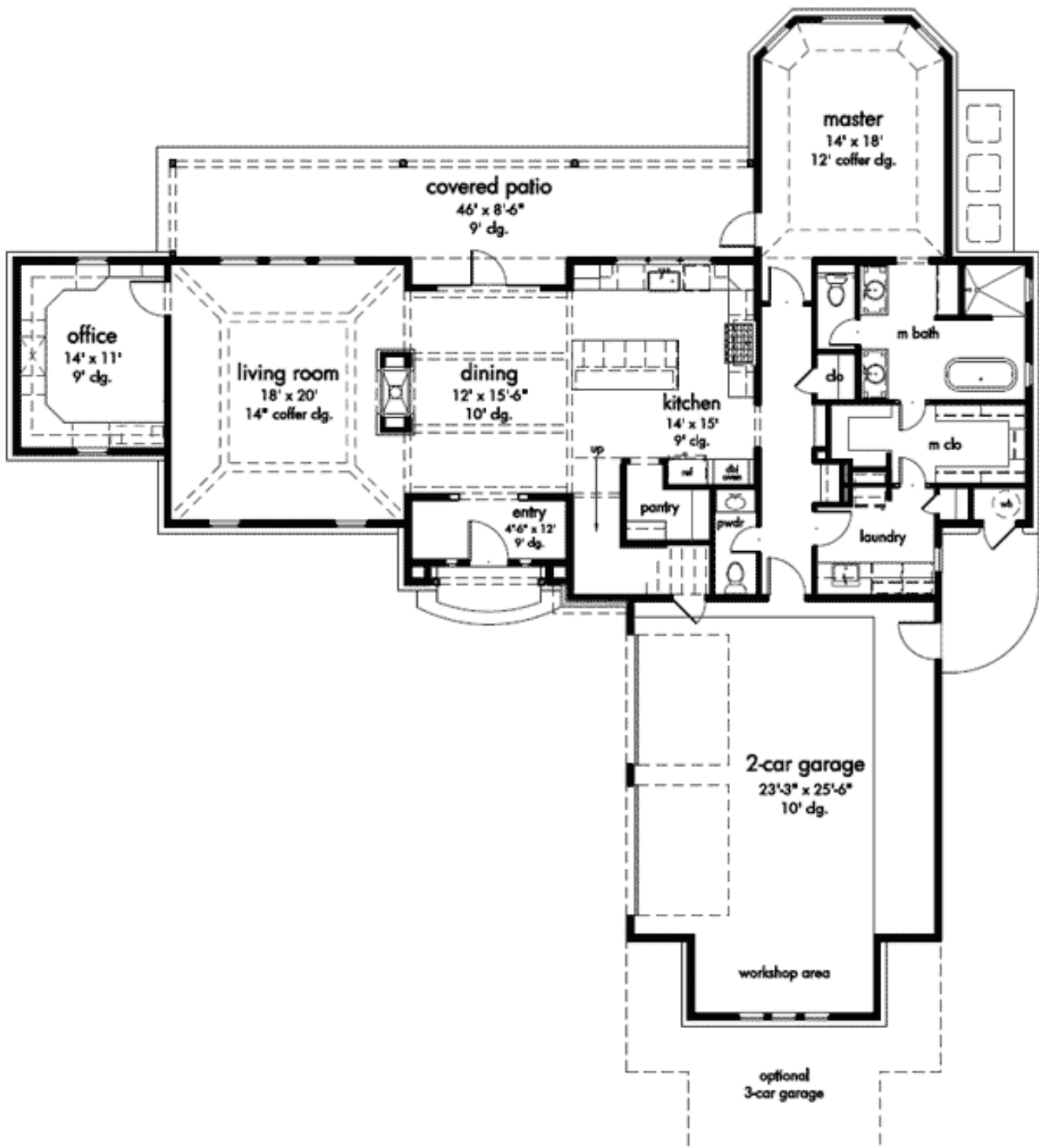
Reproducible

\$984

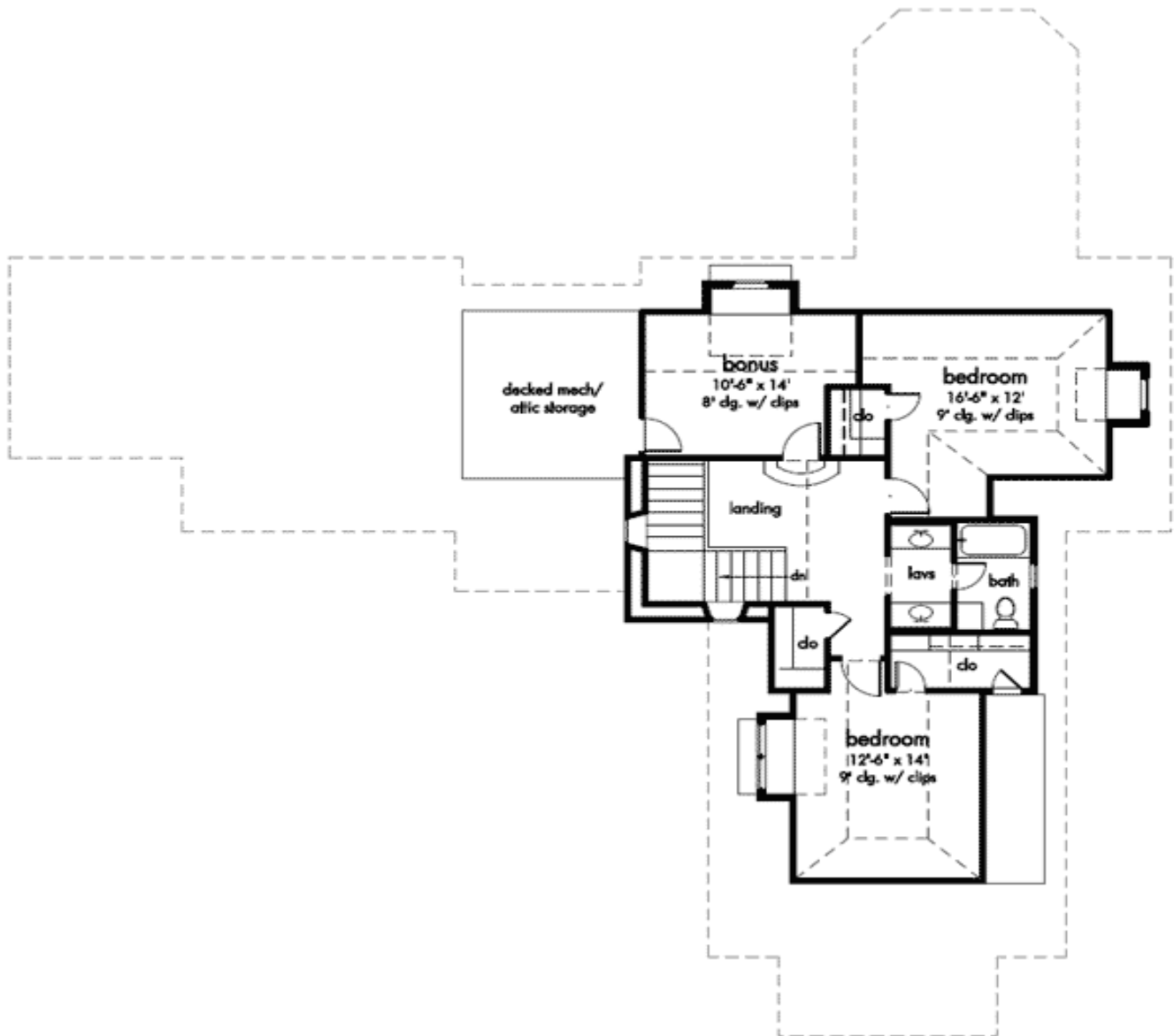
CAD

\$1,461

Main Level



2nd Level



Photo



Sides/Rear



back elevation



side elevation



side elevation

Kitchen



Kitchen Vw2

