

Architectural Designs ...selling quality house plans for over 30 years.

Plan W35146GH



House plans are Copyright © 2009 by our architects and designers.

Style: Craftsman, Metric, Mountain, Northwest

Total Living Area: 2733

Main Flr.: 1420

Lower Level: 1313

Front Porch: 120 sq. ft.

Rear Porch: 176 sq. ft.

Covered Patio: 176 sq. ft.

Total Square Feet: 3,942 sq. ft.

Carport Garage: 2 Car, 737 sq. ft.

Bedrooms: 2

Full Bathrooms: 2

Half Bathrooms: 1

Width: 78'7"

Depth: 38'6"

Maximum Ridge Height: 19'8"

Exterior Walls: ICF

Ceiling Height:

Main Floor: 9'

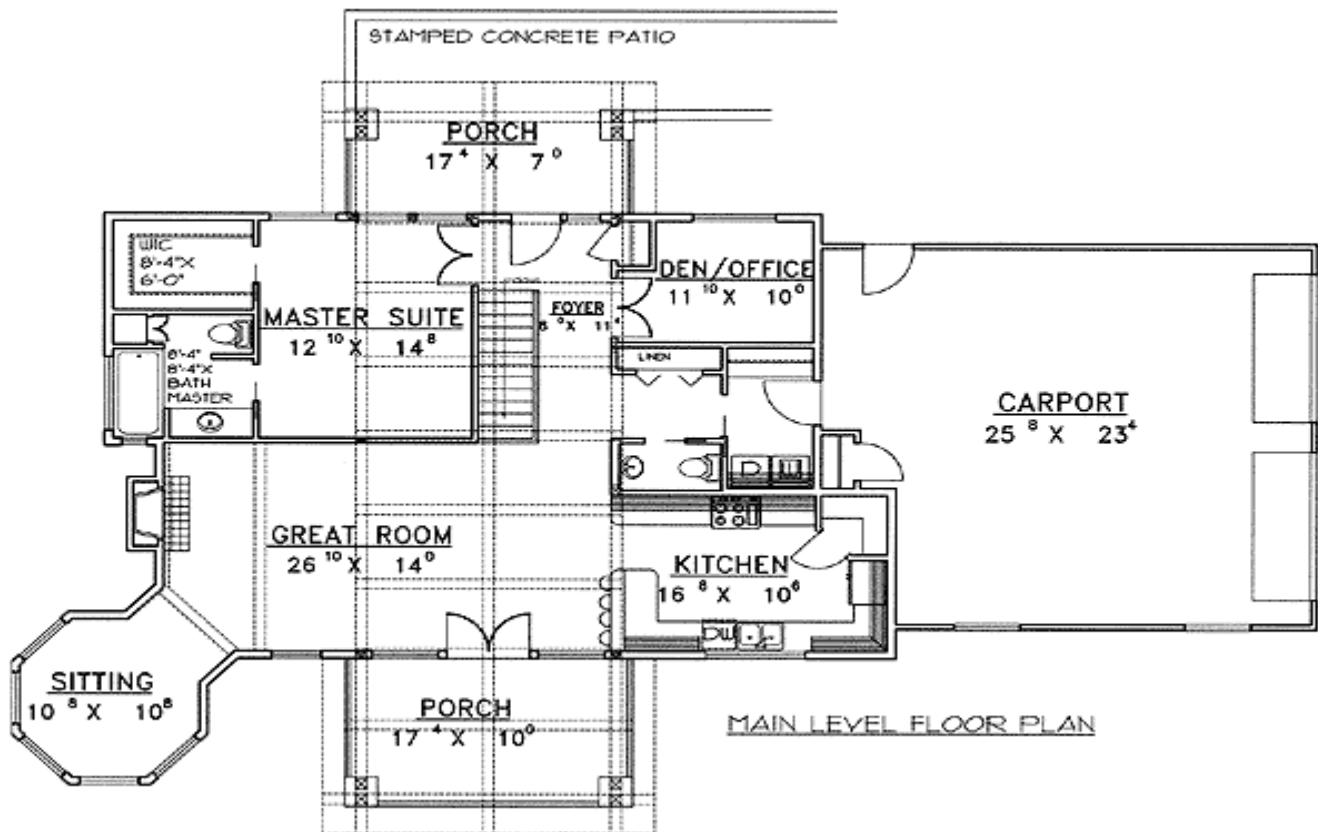
Lower Floor: 9'

Standard Foundations: Daylight

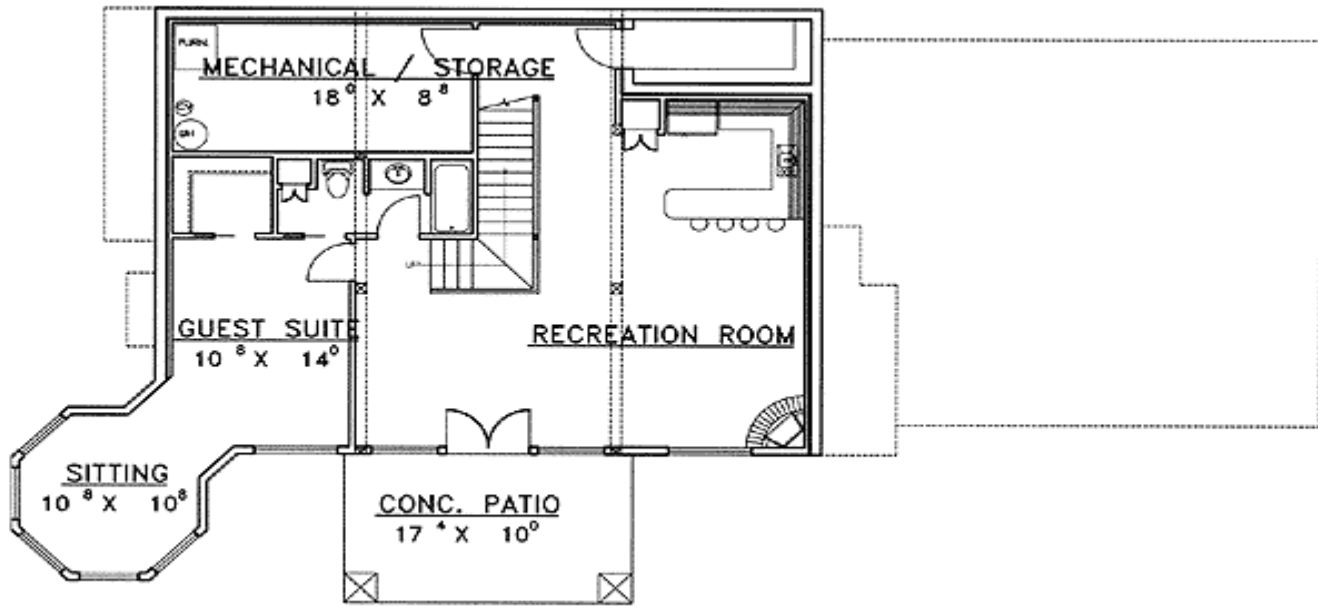
Special Features: Butler Walk-in Pantry, Den-Office-Library-Study, Carport, PDF, CAD Available, Sloping Lot, 1st Floor Master Suite, Carport

Five Sets	Eight Sets	Reproducible	PDF File	CAD
\$725	\$820	\$750	\$900	\$900

Main Level



Lower Level



LOWER LEVEL FLOOR PLAN