

Plan W0645P: Beautiful and Innovative



House plans are Copyright © 2009 by our architects and designers.

- A daring roofline, projecting bays and vertical board and batten siding plus a large glass area collecting the sun make this design a beauty.
- The cleverly designed interior, with a sloping ceiling in the living room, allows heat from the wood-burning stove to rise and flow into the upstairs bedrooms through high louvers on the inside wall. In hot weather, open windows on both first and second floors set up cooling currents of air.
- The plan is tidy but complete. The first floor has a combined kitchen-dining area, laundry-mudroom and a large great room which has a lovely window seat and opens onto a large deck.
- The first floor master bedroom has a large walk-in closet. Upstairs two bedrooms share a bath.
- Foundation options: basement, slab, crawlspace. Specify when ordering.

Style: Contemporary, Vacation

Total Living Area: 1529

Main Flr.: 1028

2nd Flr.: 501

Basement Unfinished: 1,028 sq. ft.

Total Square Feet: 2,791 sq. ft.

Attached Garage: 1 Car, 234 sq. ft.

Bedrooms: 3

Full Bathrooms: 2

Width: 44'

Depth: 35'6"

Maximum Ridge Height: 21'10"

Exterior Walls: 2x6

Ceiling Height:

Standard Foundations: Slab, Basement, Crawl

Special Features: Narrow Lot

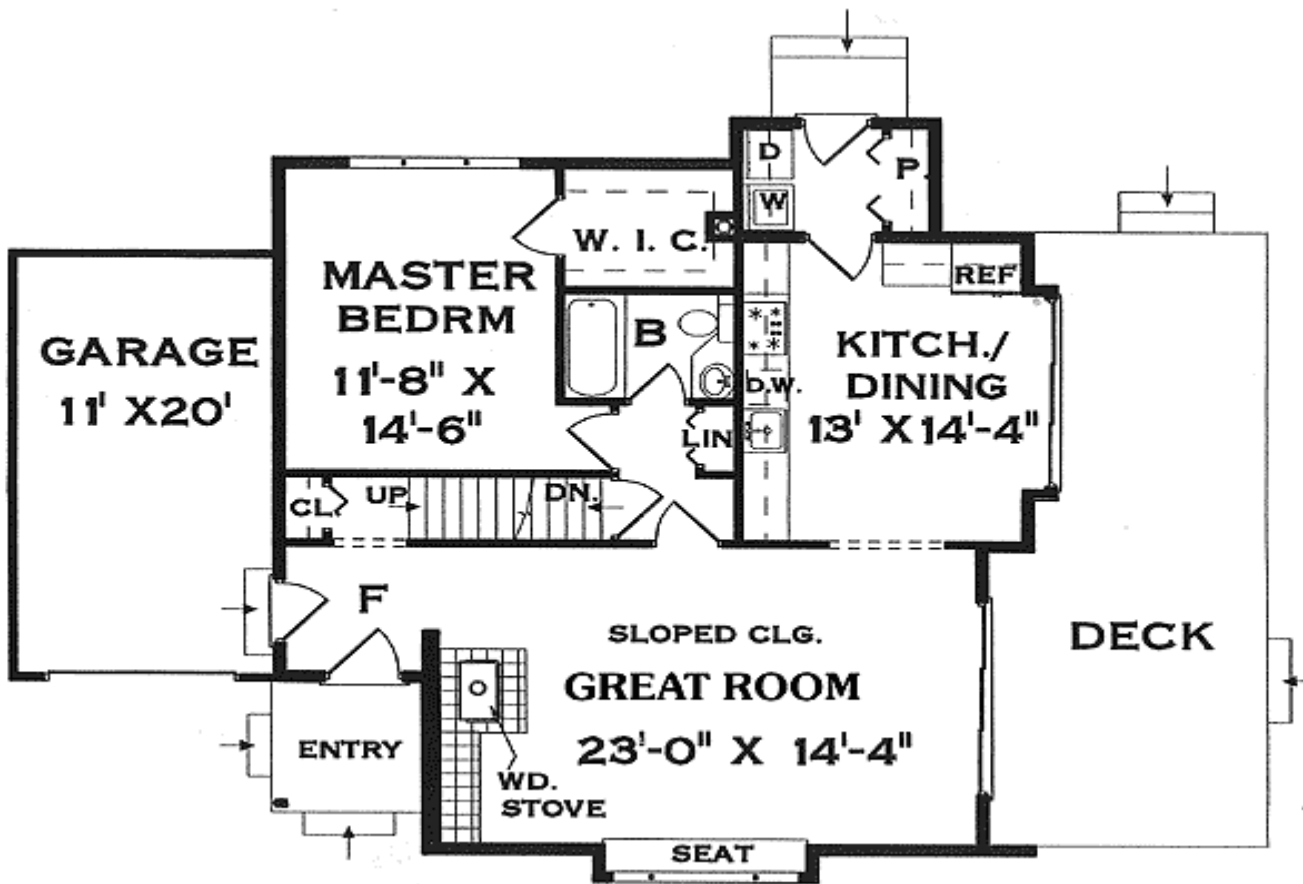
One Set
\$450

Five Sets
\$505

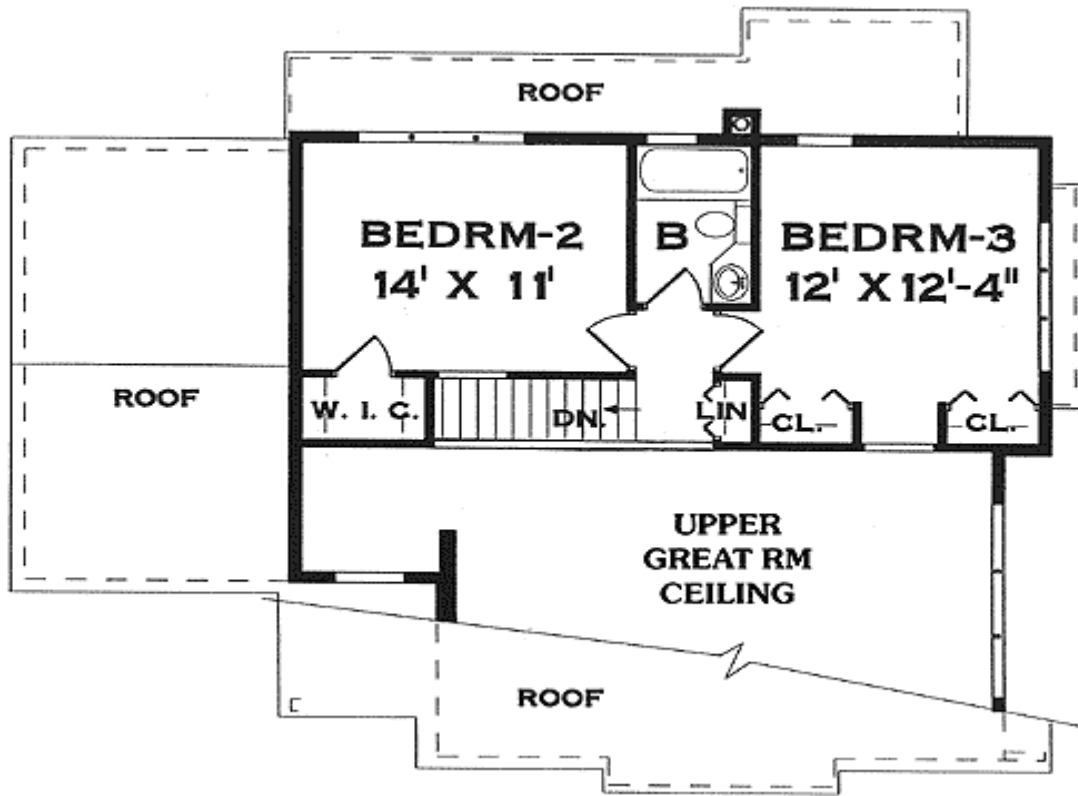
Eight Sets
\$550

Reproducible
\$670

Main Level



2nd Level



Rear View



Interior

