

Architectural Designs ...selling quality house plans for over 30 years.

Plan W48007FM: Classically French



House plans are Copyright © 2009 by our architects and designers.

- This plan looks as if it belongs right in the middle of the French countryside. With its classic European lines and steep pitched roof, the charm of Europe will greet you every day.
- The large entry foyer opens to a formal living room with vaulted ceiling on one side and the formal dining room on the other.
- Built-ins and an entertainment center await you in the family room with large fireplace and triple windows. Lots of windows let light into the breakfast nook and kitchen as well.
- Off to the side lies the study and master bedroom suite with two huge walk-in closets.
- Upstairs, three bedrooms with sloped ceilings each have their own walk-in closets. A large bonus room and attic storage complete this beautiful European-style house plan.
- Related Plans: For an alternate exterior, see house plan 48058FM.
- Need a side-entry garage? See house plan 48001FM and 48026FM (same exterior) and 48088FM (alternate exterior).

Style: European, French Country

Total Living Area: 3168

Main Flr.: 2237

2nd Flr.: 931

Bonus: 342 sq. ft.

Rear Porch: 148 sq. ft.

Porch, Front: 89 sq. ft.

Total Square Feet: 4,182 sq. ft.

Attached Garage: 3 Car, 708 sq. ft.

Bedrooms: 4

Full Bathrooms: 3

Half Bathrooms: 1

Width: 68'

Depth: 55'6"

Maximum Ridge Height: 33'

Exterior Walls: 2x4

Ceiling Height:

Main Floor: 10'

2nd Floor: 8'

Other: 10'-11' Vaulted MBR; 8'-10' Sloped BR#2"

Standard Foundations: Slab, Basement, Crawl

Alternate Foundations: Basement (\$400)

Special Features: 1st Floor Master Suite, Bonus Room, Butler Walk-in Pantry, Den-Office-Library-Study, Jack & Jill Bath

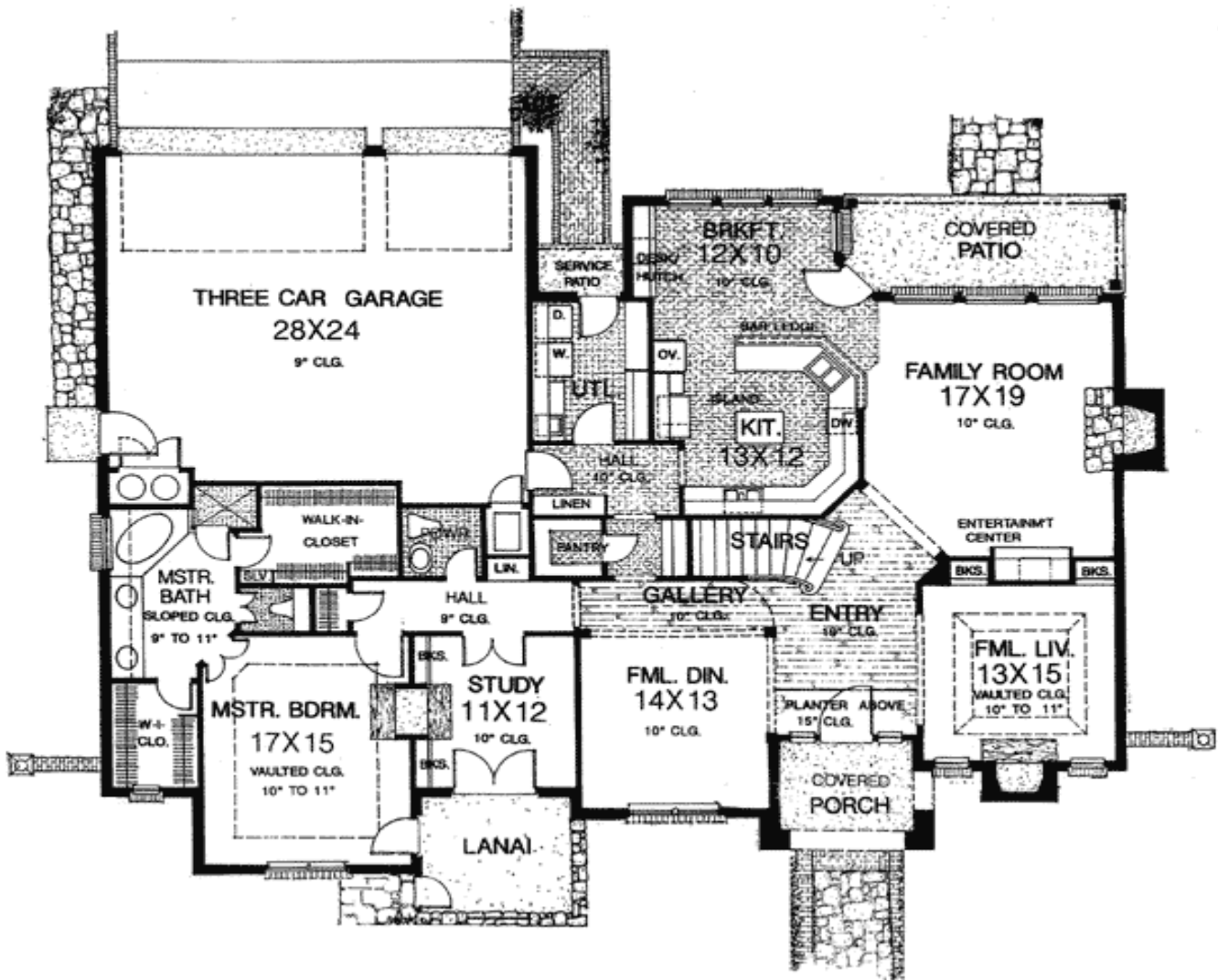
One Set
\$900

Five Sets
\$925

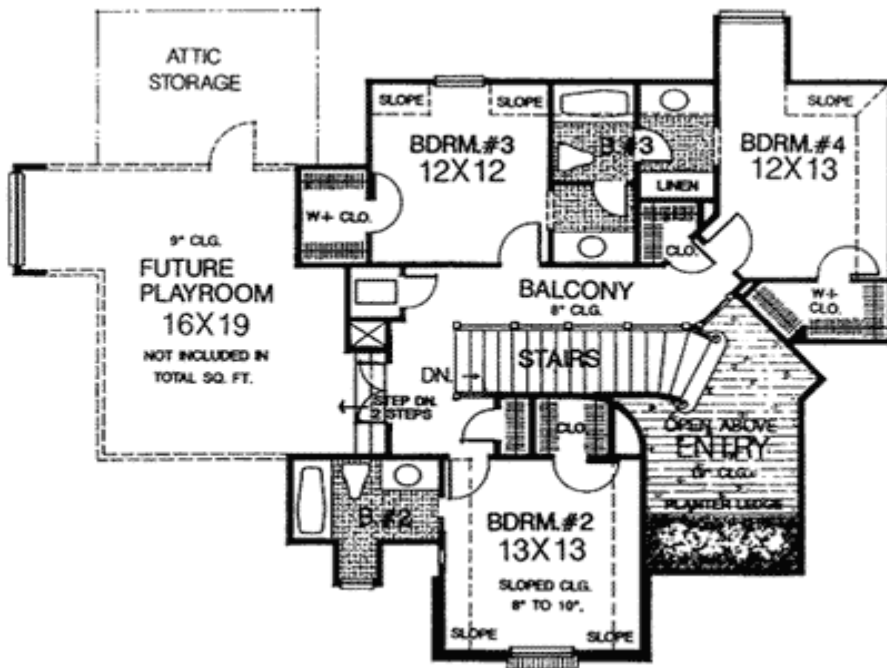
Eight Sets
\$995

Reproducible
\$1,200

Main Level



2nd Level



Rear View

