

Plan W59038ND: Vaulted Ceilings and Lots of Light



House plans are Copyright © 2009 by our architects and designers.

- A contemporary vaulted ceiling enhances the front porch of this log home while windows above the door let natural light filter in.
- Upon entering, step into the Great room and view the entire family area including the dining area and kitchen with attached-screened porch.
- One side of this main level has a master suite accented with exposed wood beams and private bathroom.
- On the opposite side of the house is an office or bedroom while the two loft areas on the upper level are connected by a bridge walkway.
- Ceilings: 8' standard.
- Foundation: Basement, crawl space, daylight basement. Please specify your preference when ordering.

Style: Log, Mountain

Total Living Area: 2301

Main Flr.: 1832

2nd Flr.: 469

Front Porch: 510 sq. ft.

Screen Porch:

Total Square Feet: 3,015 sq. ft.

Bedrooms: 2

Full Bathrooms: 2

Width: 51'10"

Depth: 53'10"

Exterior Walls: Log

Ceiling Height:

Main Floor: 8'

Standard Foundations: Crawl

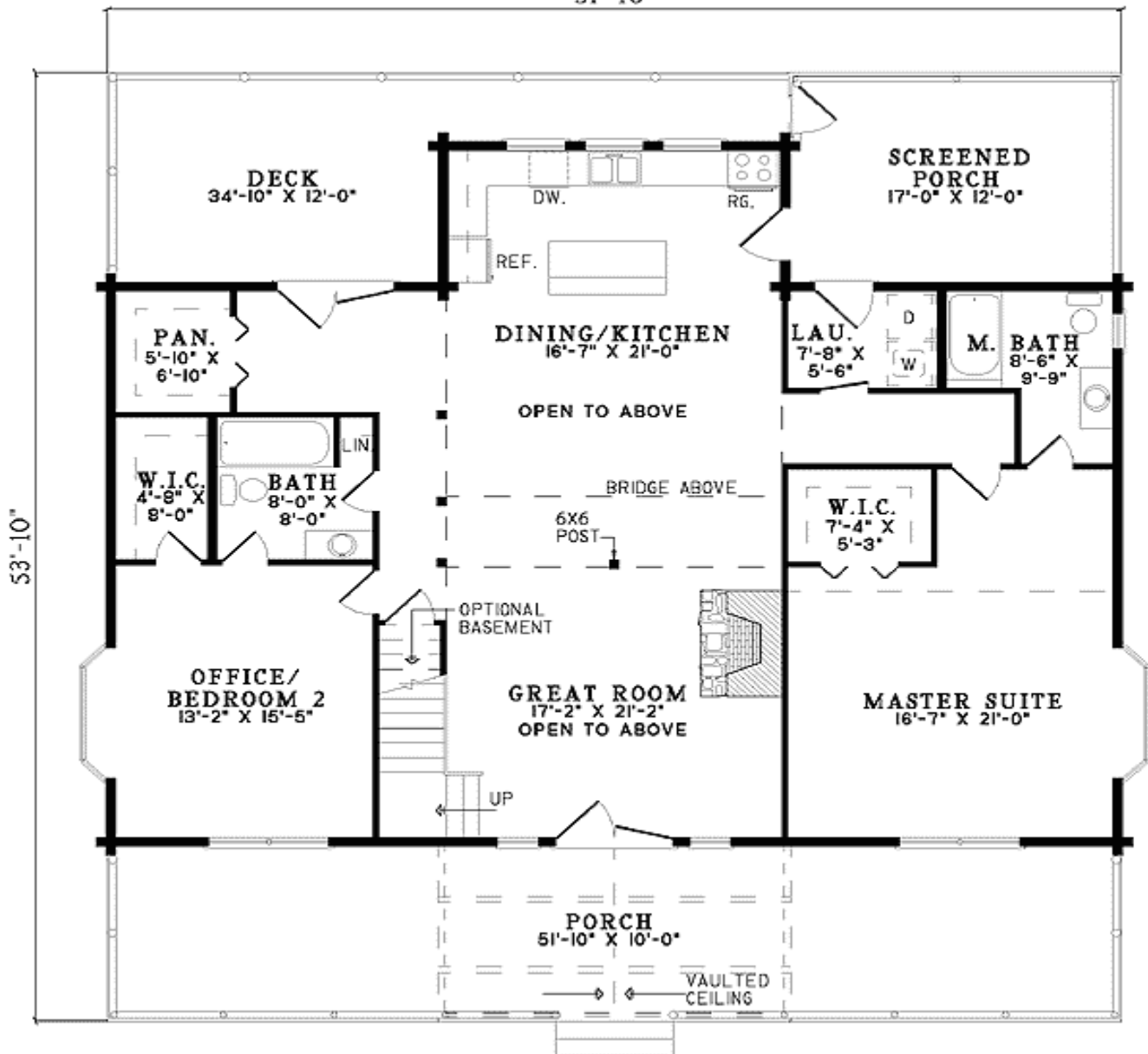
Alternate Foundations: Walkout (\$250), Basement (\$250)

Special Features: PDF, 1st Floor Master Suite

One Set	Five Sets	Eight Sets	Reproducible	PDF File	CAD
\$575	\$660	\$695	\$880	\$880	\$1,500

Main Level

51'-10"



2nd Level

