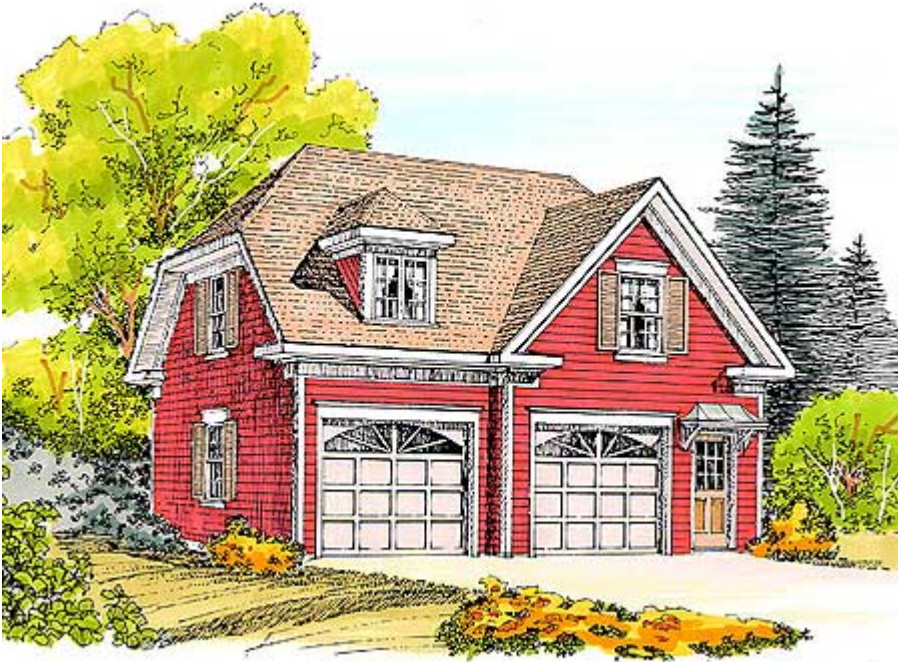


Architectural Designs ...selling quality house plans for over 30 years.

Plan W4781PR: Hip Roof Garage Apartment



House plans are Copyright © 2009 by our architects and designers.

- Capped with a hipped roof and trimmed with deep eave overhang, this design has a timeless quality.
- The front facing gable further accentuates the fa'ade, while curved glass in the garage doors underscores the carriage house motif.
- Upstairs, the entry foyer accommodates a coast closet.
- Inside the apartment a compact strip kitchen has ample counter space and easily serves the adjoining living/dining area.
- The bedroom/office is nicely sized, and boasts a large walk-in closet.
- A full bath completes this home plan.

Style: Carriage, Garage

Total Living Area: 565

2nd Flr.: 565

Total Square Feet: 1,245 sq. ft.

Attached Garage: 2 Car, 680 sq. ft.

Bedrooms: 1

Full Bathrooms: 1

Width: 30'

Depth: 25'

Maximum Ridge Height: 24'

Exterior Walls: 2x4

Ceiling Height:

Main Floor: 8'

2nd Floor: 8'

Standard Foundations: Slab

Special Features: Narrow Lot

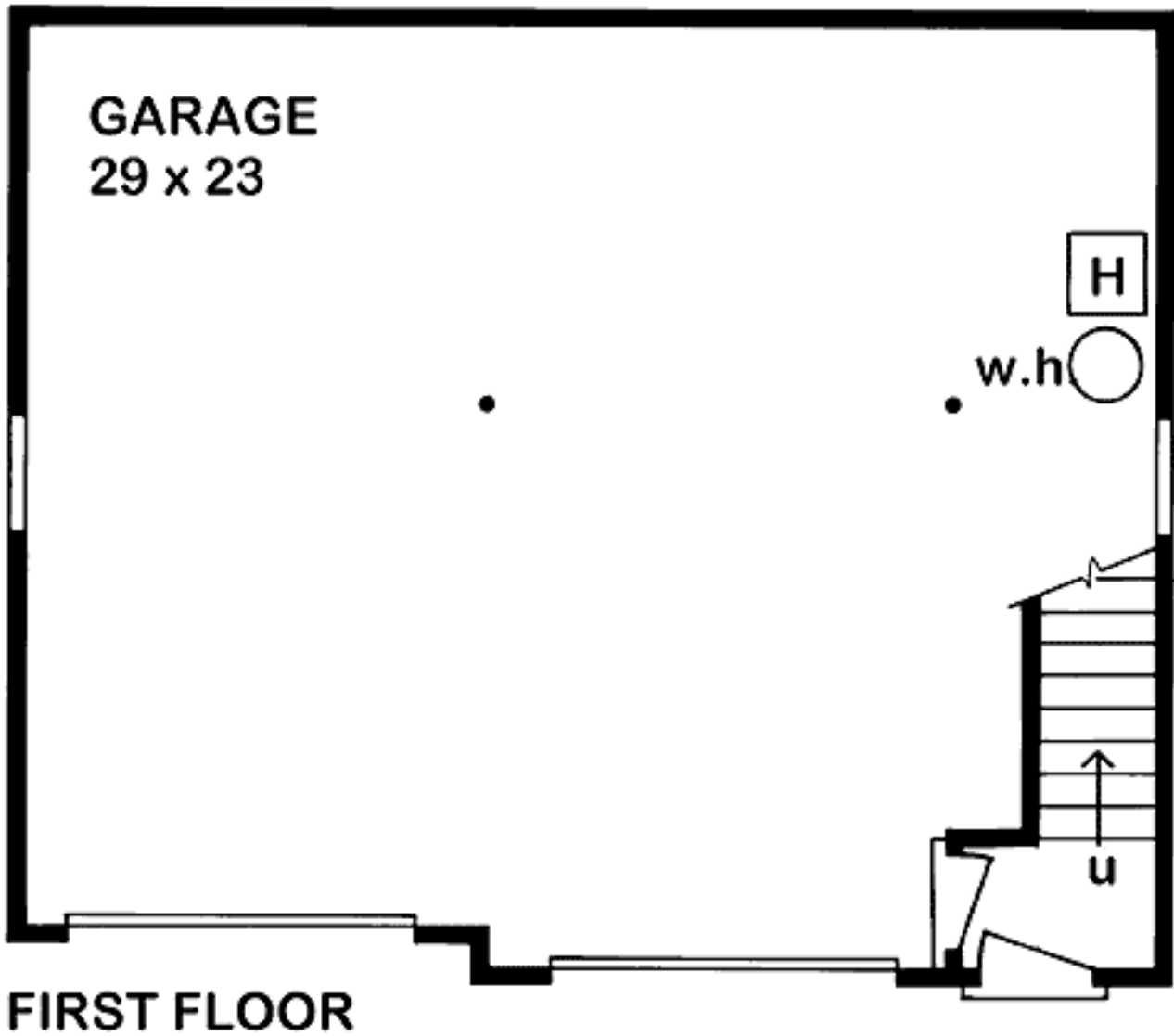
One Set
\$295

Five Sets
\$355

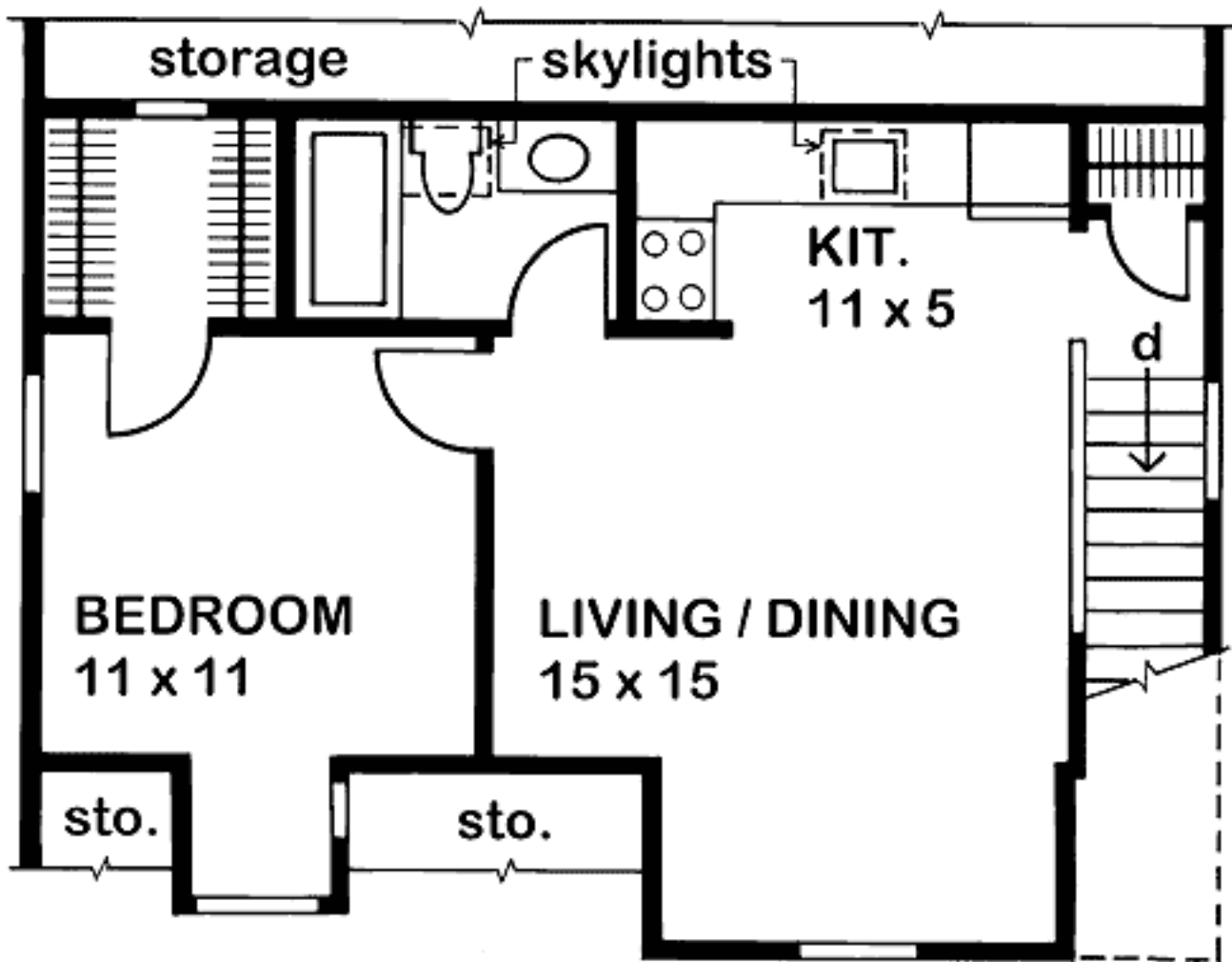
Eight Sets
\$374

Reproducible
\$455

Main Level



2nd Level



SECOND FLOOR 565 sq. ft.