

Architectural Designs ...selling quality house plans for over 30 years.

Plan W40843DB: Simple Clean Lines



House plans are Copyright © 2009 by our architects and designers.

- Step onto your front porch and enter into the family room of this traditional house plan with simple clean lines. Note the coat closet as you enter.
- The fireplace will warm you as you sit in the open family room. The dining area and kitchen with rear covered porch access form the public part of this design.
- Three bedrooms are tucked away. The master features a walk-in closet and bath. The other bedrooms share a hall bath.
- Off the garage you'll find a washer/dryer mudroom.
- NOTE: This house plan is designed for Structural Insulated Panel (SIP) construction. For a stick built version, see house plan 41024DB.
- Want a different exterior? See house plan 41025DB.
- Need two floors? See house plans 41827DB and 41828DB.

Style: Cottage, Traditional

Total Living Area: 1195

Main Flr.: 1195

Front Porch: 228 sq. ft.

Rear Porch: 67 sq. ft.

Total Square Feet: 1,920 sq. ft.

Attached Garage: 2 Car, 430 sq. ft.

Bedrooms: 3

Full Bathrooms: 2

Width: 40'

Depth: 48'8"

Maximum Ridge Height: 25'

Exterior Walls: SIP

Ceiling Height:

 Main Floor: 9'

Standard Foundations: Basement

Alternate Foundations: Slab (\$150), Walkout (no charge), Crawl (\$150)

Special Features: Narrow Lot, 1st Floor Master Suite, CAD Available, Bonus Room, PDF, Photo Gallery

One Set
\$545

Five Sets
\$695

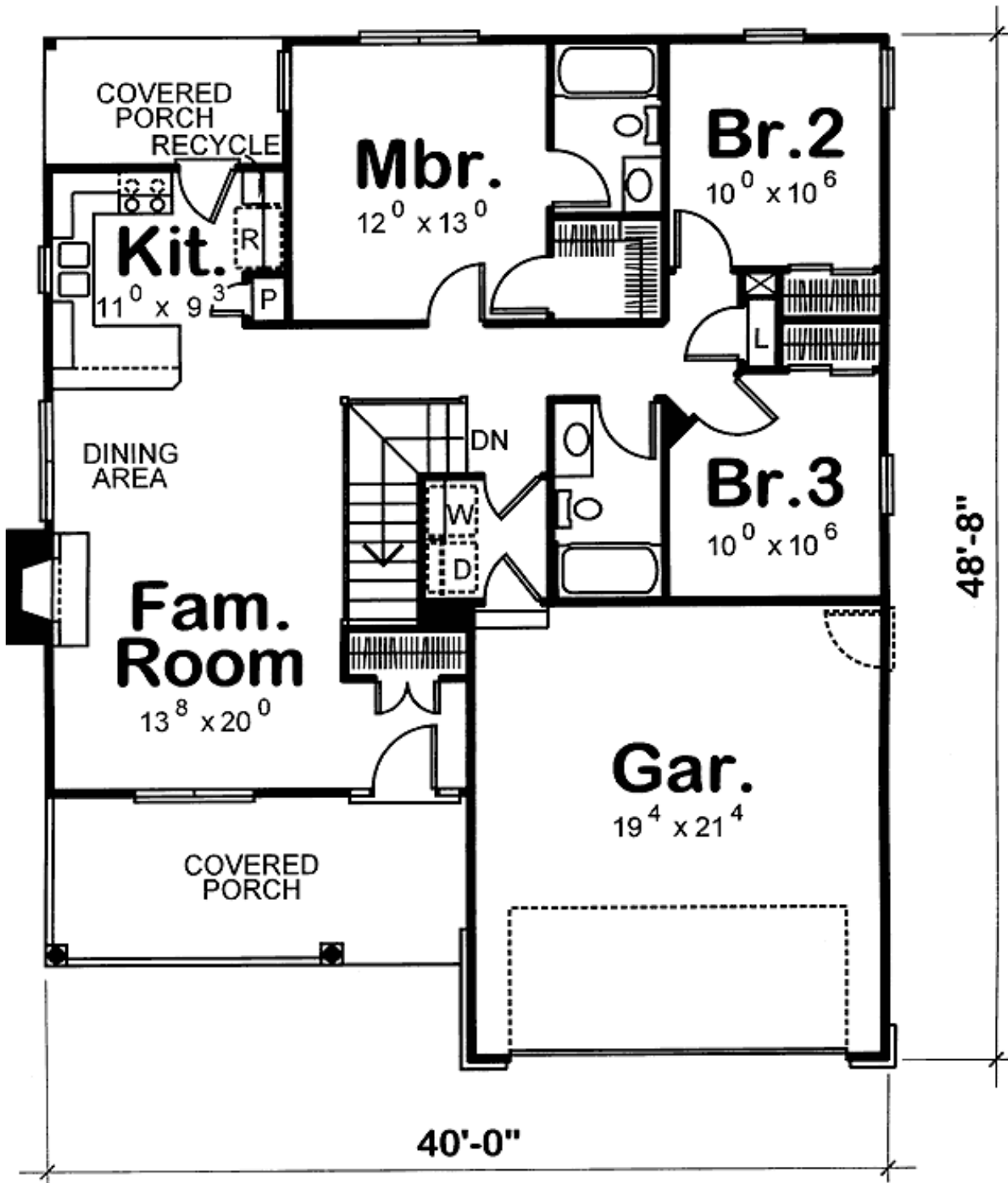
Eight Sets
\$755

Reproducible
\$695

PDF File
\$695

CAD
\$995

Main Level



Architectural Designs ...selling quality house plans for over 30 years.

Photo



Rear View

