

# Architectural Designs ...selling quality house plans for over 30 years.

Plan W21374DR: Abundant Windows



House plans are Copyright © 2009 by our architects and designers.

- You'll enjoy the very spacious and abundantly windowed family room, very well-organized kitchen with plenty of storage, original master bedroom suite and triple access front porch with over 400 sq. ft. of room to relax on.
- The main level includes a tasteful entrance, superb family room with fireplace, kitchen with walk-in pantry, island lunch counter and plenty of storage space, dining room.
- The second level features the master bedroom suite with walk-in and private bathroom. Two secondary bedrooms share a bathroom, laundry closet.
- Note: The width/depth figures do not include the porch.
- Need a garage? The garage pictured with the house plan is available as an add-on. See it here - 21197DR.

Style: Canadian, Country, Farmhouse, Metric

Total Living Area: 1898

Main Flr.: 949

2nd Flr.: 949

Total Square Feet: 1,898 sq. ft.

Bedrooms: 3

Full Bathrooms: 2

Half Bathrooms: 1

Width: 32'

Depth: 34'

Maximum Ridge Height: 31'

Exterior Walls: 2x6

Ceiling Height:

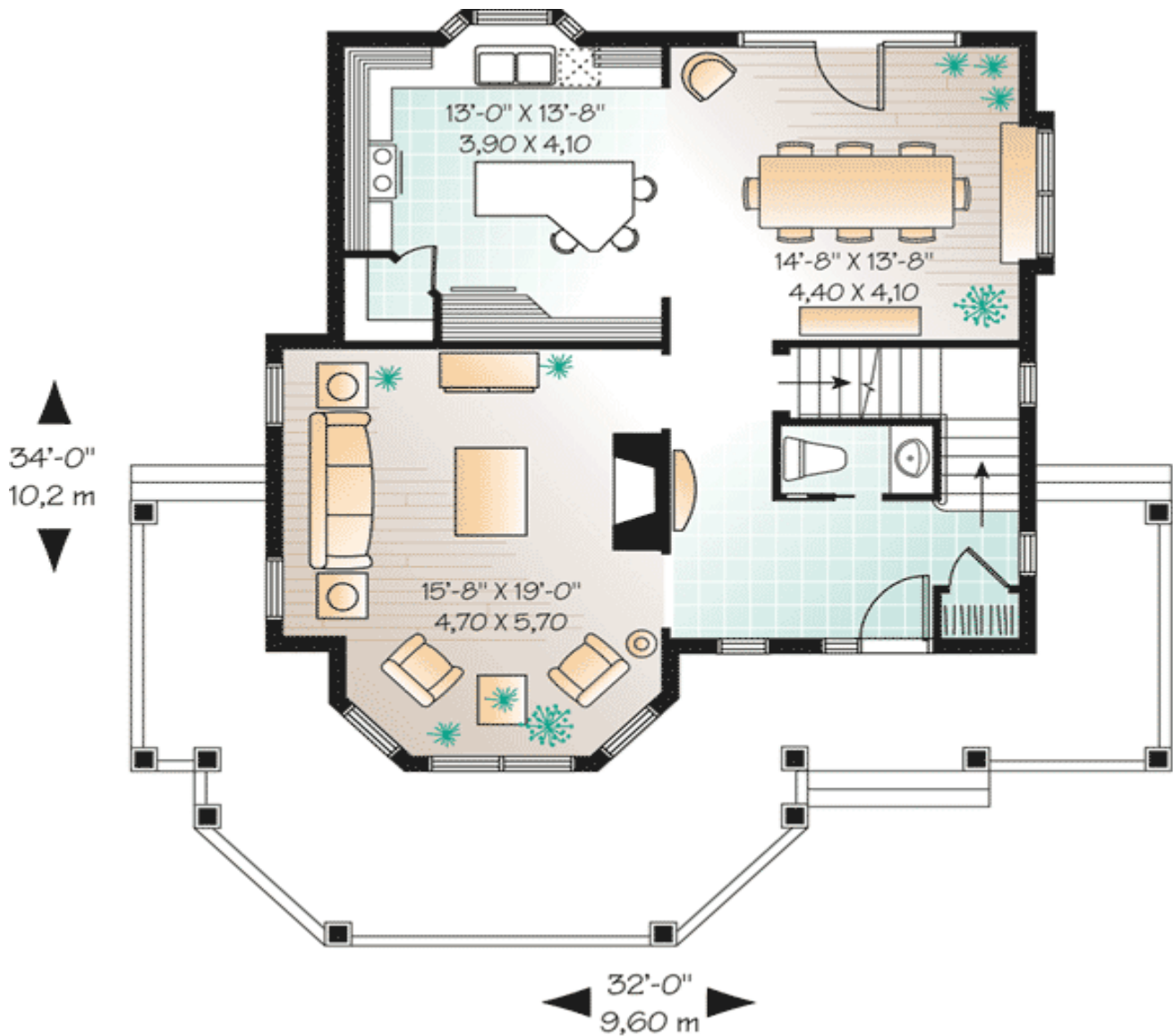
Standard Foundations: Basement

Alternate Foundations: Slab (\$295), Crawl (\$295)

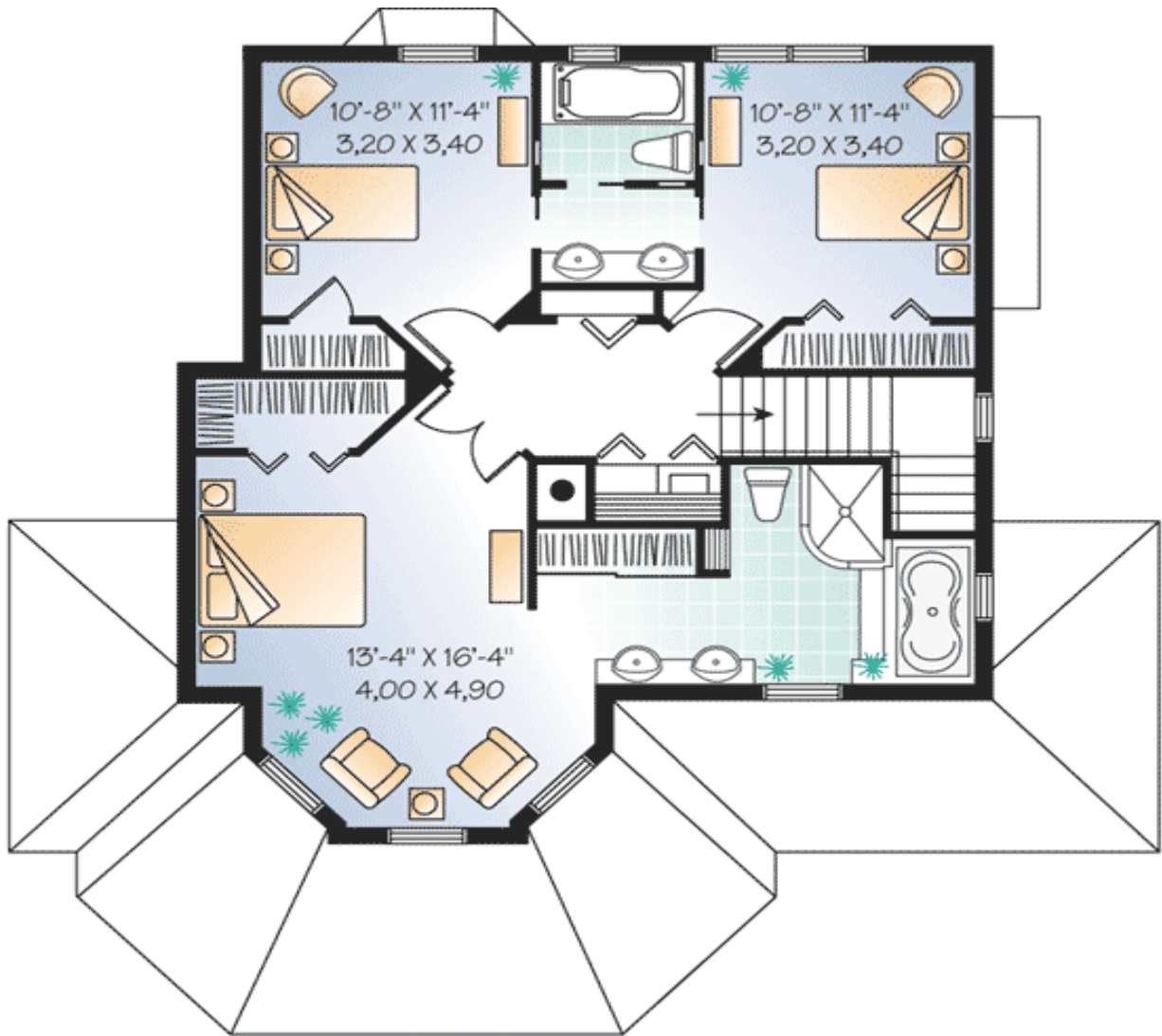
Special Features: Narrow Lot, CAD Available, Wrap Around Porch, PDF

One Set	Five Sets	Eight Sets	Reproducible	PDF File	CAD
\$649	\$689	\$719	\$949	\$949	\$1,600

## Main Level



## 2nd Level



Rear View

