

Plan W6908AM: Fabulous Wrap-Around Porch



House plans are Copyright © 2009 by our architects and designers.

- This Victorian beauty features a covered porch that wraps almost entirely around the home. The side-entry garage suits the home to a wide or corner lot.
- Centering around the diagonally placed stairway, the main level includes a den set in a bay full of windows, an open living/dining area, a fireplaced family room and a large kitchen with an eating nook, cooktop island and built-in desk.
- The two-story foyer can be viewed from the upstairs hall. The vaulted master bedroom opens to a luxury-filled bath. Bedrooms two and three share a hall bath.
- Concealed at the back of the house, the two-car garage opens on the side, making the house perfect for a corner lot. A short hallway leads from the garage to the kitchen, facilitating delivery of groceries. The hall is flanked by a powder room and a laundry room, complete with sink, cabinets and countertop.
- For a related house plan, see 6873AM.

Style: Victorian

Total Living Area: 2362

Main Flr.: 1337

2nd Flr.: 1025

3rd Flr.: 1

Porch, Combined: 829 sq. ft.

Attached Garage: 2 Car, 420 sq. ft.

Bedrooms: 3

Full Bathrooms: 2

Half Bathrooms: 1

Width: 51'

Depth: 73'

Maximum Ridge Height: 32'

Exterior Walls: 2x6

Ceiling Height:

Main Floor: 9'

2nd Floor: 8'

Other: Vaulted MBR

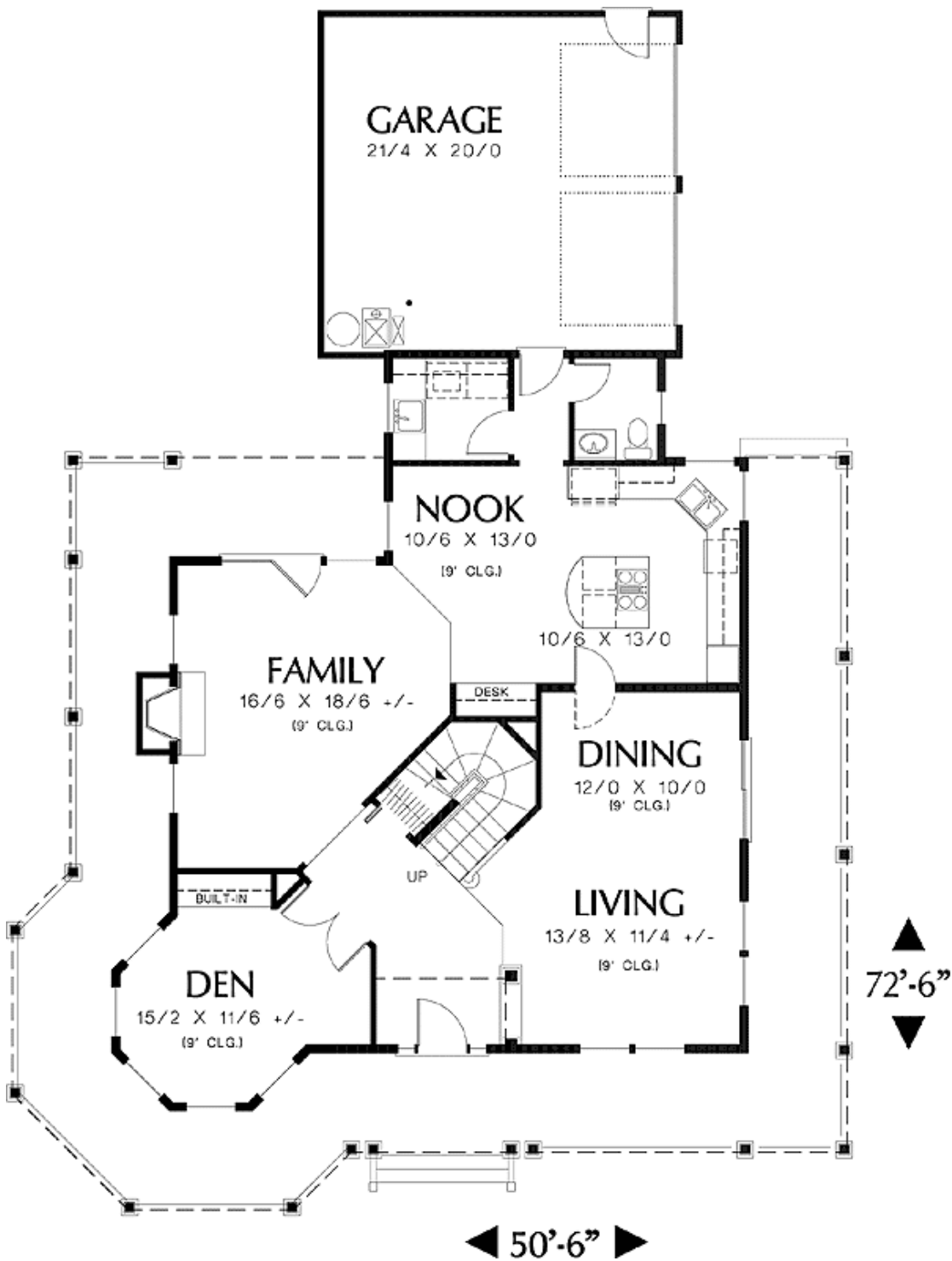
Standard Foundations: Crawl

Alternate Foundations: Slab (\$105), Basement (\$250)

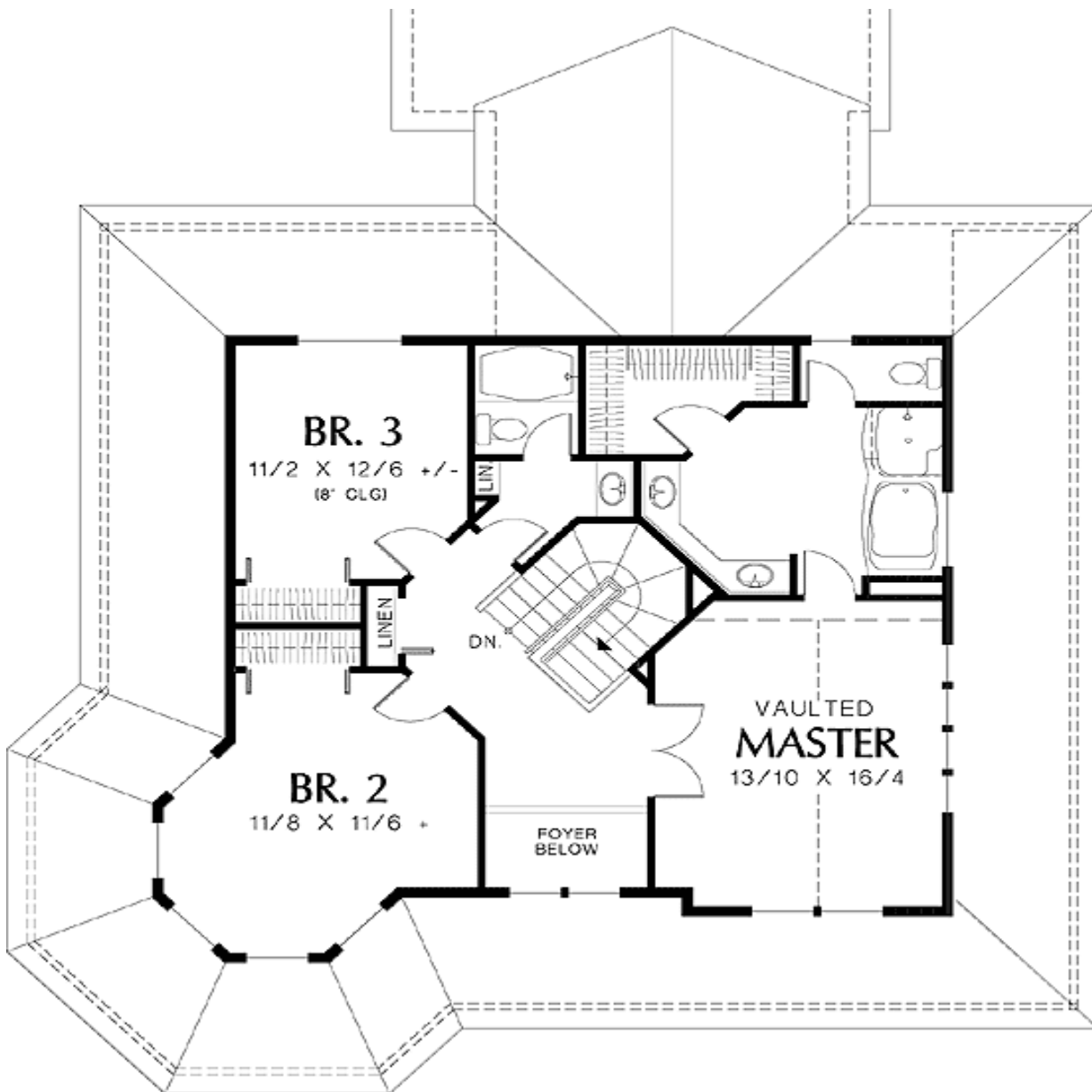
Special Features: Wrap Around Porch, PDF, CAD Available, Photo Gallery

One Set	Five Sets	Eight Sets	Reproducible	PDF File	CAD
\$575	\$625	\$700	\$925	\$925	\$1,575

Main Level



2nd Level



Architectural Designs ...selling quality house plans for over 30 years.

Photo



Architectural Designs ...selling quality house plans for over 30 years.

Photo #2



Architectural Designs ...selling quality house plans for over 30 years.

Elevation #2



Rear View

