

Architectural Designs ...selling quality house plans for over 30 years.

Plan W21092DR: Elegant European Living



House plans are Copyright © 2009 by our architects and designers.

- The glamorous lines of this European-inspired Mediterranean style home plan are enhanced by the elegant bay window, the symmetrical design, side columns and the lovely shutters on the upstairs windows.
- The kitchen, with its attached breakfast bar, is separated from the dining room by a door so guests never have to enter the kitchen.
- The family room at the back of the home features an entire wall of windows and has sliding door access onto the rear solarium and the back porch.
- Upstairs, excellent use of space allows for four comfortable bedrooms, each with its own closet, one full bathroom and one guest bathroom.
- The unfinished basement can be expanded for future living space.
- Ceilings: 9' first floor; 8' second floor.
- Related House Plans: see 21468DR and 21509DR.

Style: Canadian, Mediterranean, Metric

Total Living Area: 2119

Main Flr.: 1087

2nd Flr.: 1032

Basement Unfinished: 1,087 sq. ft.

Deck: 96 sq. ft.

Balcony/Veranda: 100 sq. ft.

Total Square Feet: 3,644 sq. ft.

Attached Garage: 1 Car, 242 sq. ft.

Bedrooms: 4

Full Bathrooms: 2

Half Bathrooms: 1

Width: 38'

Depth: 38'

Maximum Ridge Height: 26'2"

Exterior Walls: 2x6

Ceiling Height:

 Main Floor: 9'

 2nd Floor: 8'

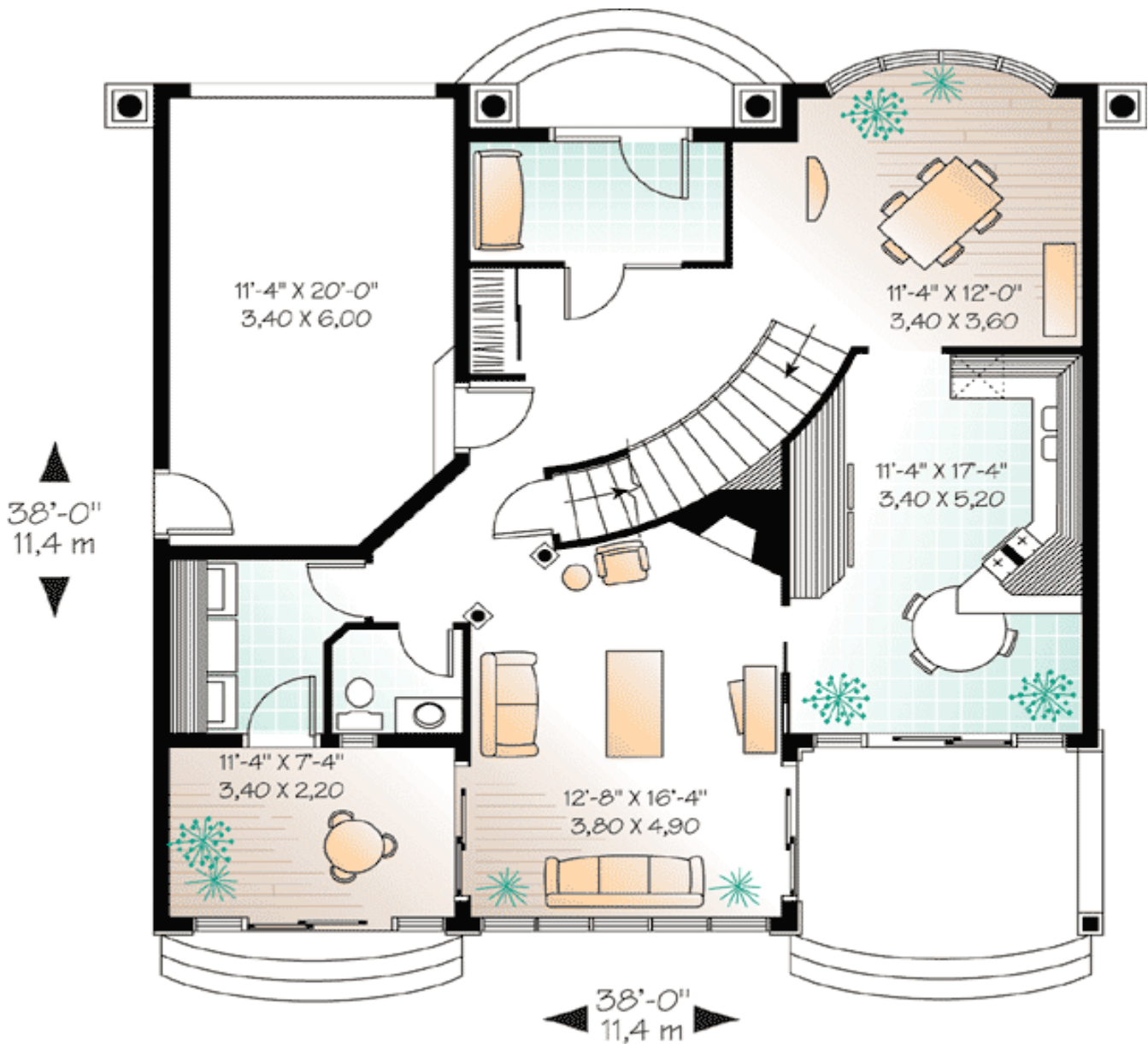
Standard Foundations: Basement

Alternate Foundations: Slab (\$295), Crawl (\$295)

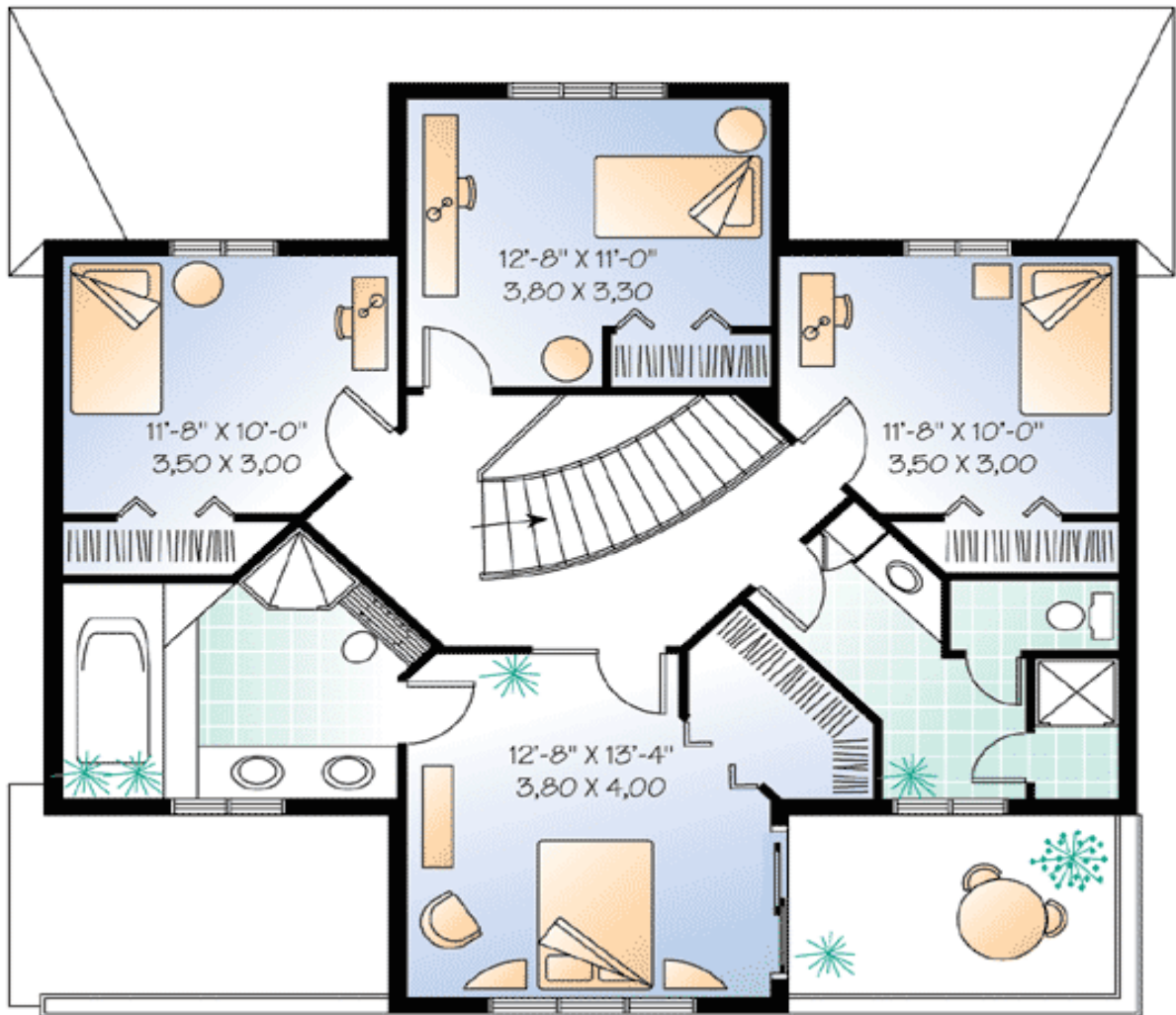
Special Features: PDF, Narrow Lot, CAD Available, Den-Office-Library-Study

One Set	Five Sets	Eight Sets	Reproducible	PDF File	CAD
\$649	\$689	\$719	\$949	\$949	\$1,600

Main Level



2nd Level



Rear View

