

Architectural Designs ...selling quality house plans for over 30 years.

Plan W6930AM: Charming Country Design



House plans are Copyright © 2009 by our architects and designers.

- A fine house plan for a country setting, this plan offers a quaint covered porch at the entry, cedar shingles in the gables, and stonework at the foundation line.
- To the right of the foyer, a den allows for either a desk or a closet. The hall to the left leads to three bedrooms, two for family and guests. In the master suite, the bedroom is nicely vaulted and opens to a large walk-in closet and a private bath with a spa tub.
- Also vaulted is the great room, which rises to 14' and contains a fireplace and optional media center. The adjacent dining room has space for a hutch or built-ins, and the open kitchen is delineated by an angled island with an eating bar.
- Extra space in the garage can be used for a third car, for storage or as a workshop.
- Related Plans: For alternate versions, see these house plans - 69023AM, 6965AM and 69022AM.

Style: Country, Craftsman, Traditional

Total Living Area: 2001

Main Flr.: 2001

Total Square Feet: 2,626 sq. ft.

Attached Garage: 3 Car, 625 sq. ft.

Bedrooms: 3

Full Bathrooms: 2

Width: 60'

Depth: 50'

Maximum Ridge Height: 26'

Exterior Walls: 2x6

Ceiling Height:

Main Floor: 9'

Other: 14' Vaulted Great Room

Standard Foundations: Crawl

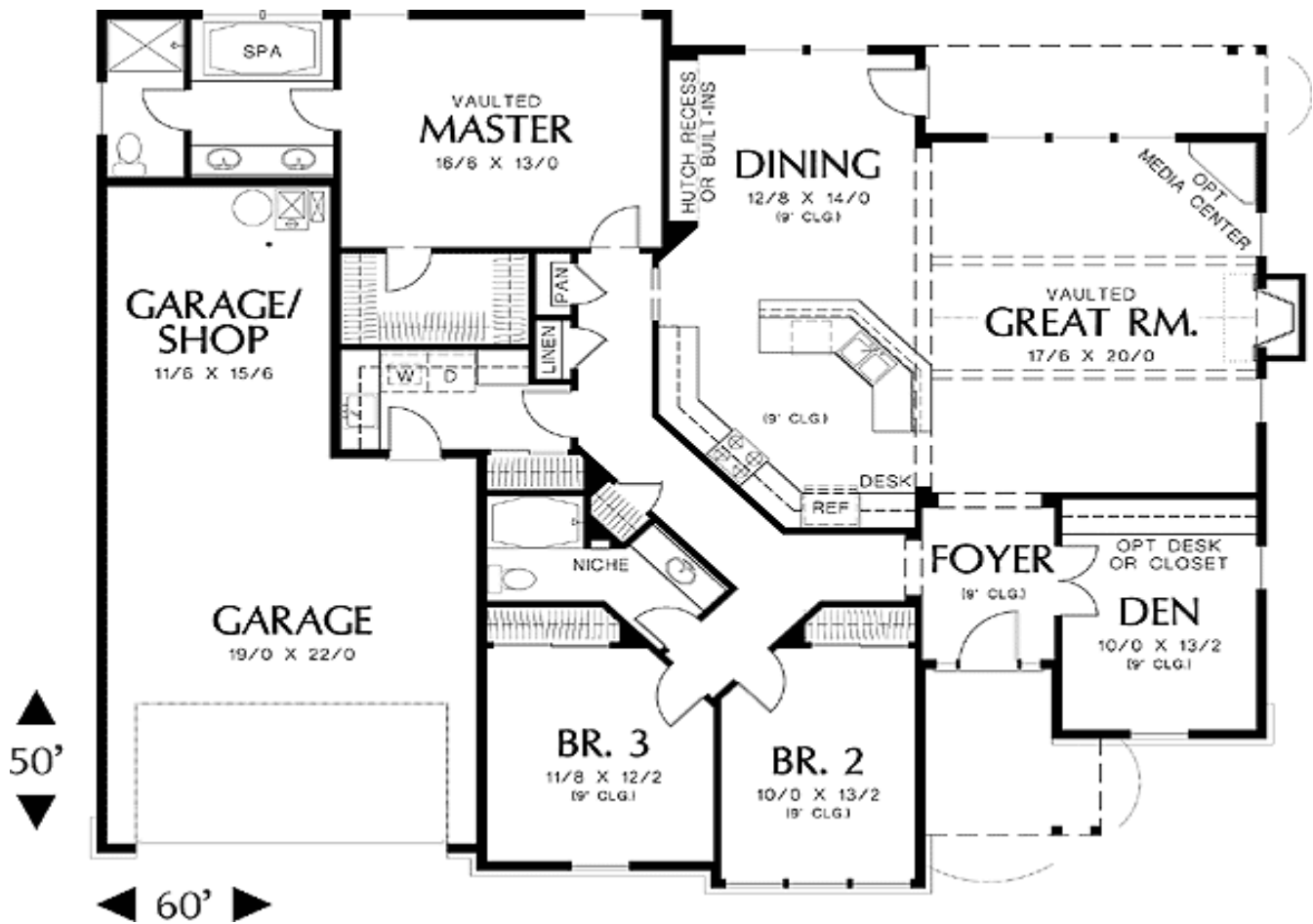
Alternate Foundations: Slab (\$105), Basement (\$250)

Special Features: Photo Gallery, 1st Floor Master Suite, PDF, CAD Available, Den-Office-Library-Study, Split Bedrooms

One Set	Five Sets	Eight Sets	Reproducible	PDF File	CAD
\$575	\$625	\$700	\$925	\$925	\$1,575

Architectural Designs ...selling quality house plans for over 30 years.

Main Level



Architectural Designs ...selling quality house plans for over 30 years.

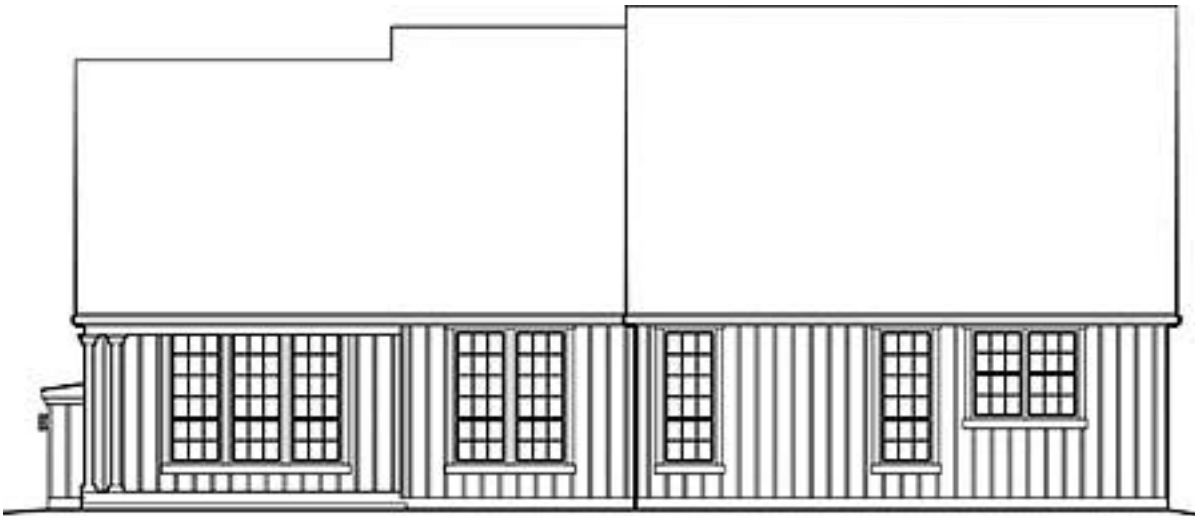
Photo



Elevation #2



Rear View



Great Room



Great Rm Vw2



Dining Room

