

Plan W26113SD: Colonial Inspiration



House plans are Copyright © 2009 by our architects and designers.

- The one-and-a-half story home plan was inspired by colonial architecture. It offers a charming family abode with modern amenities and packs efficient spaces within modest overall dimensions.
- The living room has views to the front yard and includes ample space for gatherings.
- The large dining/kitchen area has country kitchen openness and informality.
- A washer/dryer room and linen closet are conveniently located at the back entry.
- Upstairs, bedrooms 2 and 3 have dormers and side windows for natural light.
- All in all, this plan delivers superb livability and lovely traditional character in a cost-conscious house plan.

Style: Cape Cod, Country

Total Living Area: 1199

Main Flr.: 792

2nd Flr.: 407

Entry: 45 sq. ft.

Total Square Feet: 1,244 sq. ft.

Bedrooms: 3

Full Bathrooms: 2

Half Bathrooms: 1

Width: 33'

Depth: 24'

Exterior Walls: 2x4

Ceiling Height:

Main Floor: 8'

2nd Floor: 8'

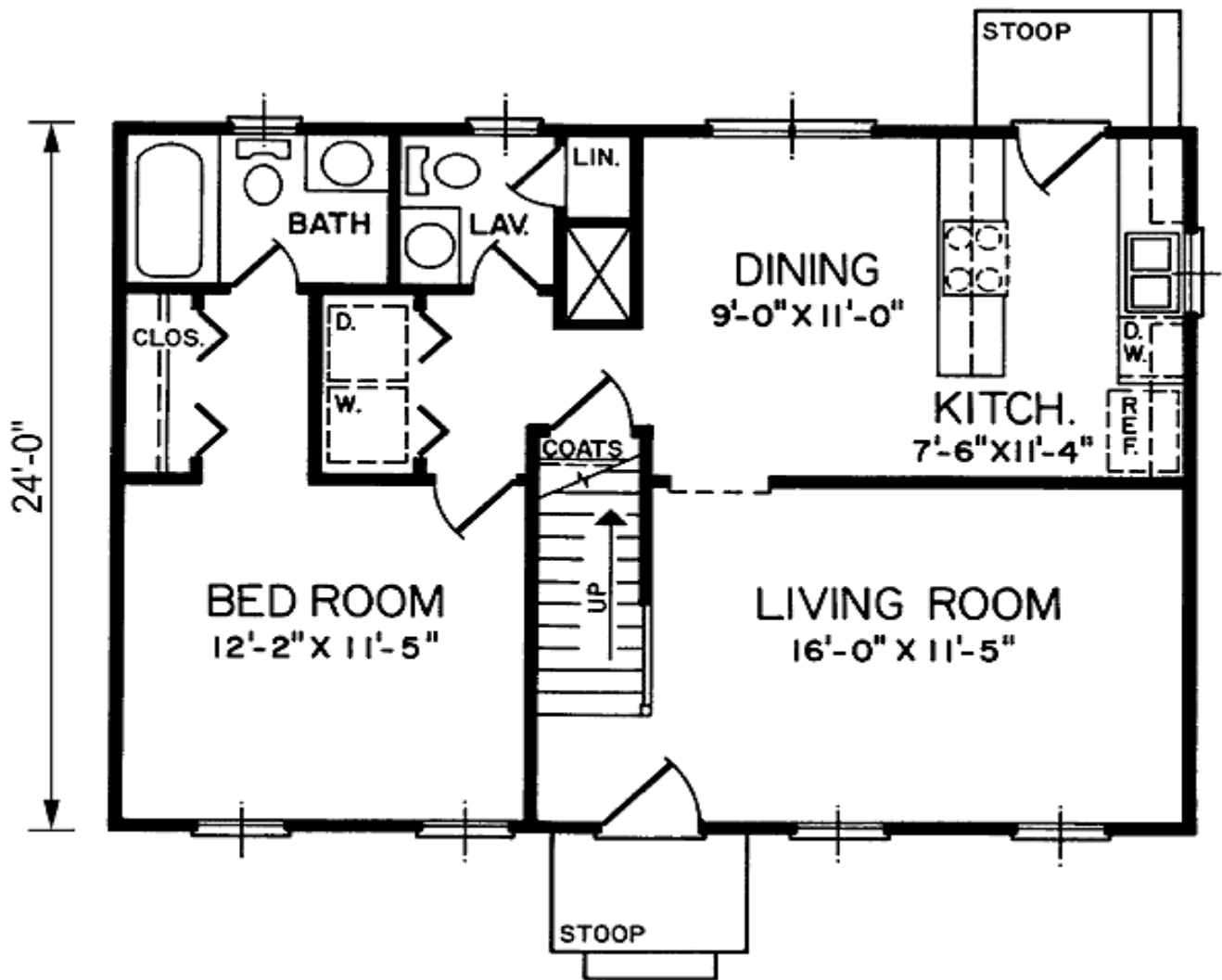
Standard Foundations: Slab, Crawl

Alternate Foundations: Basement (\$100)

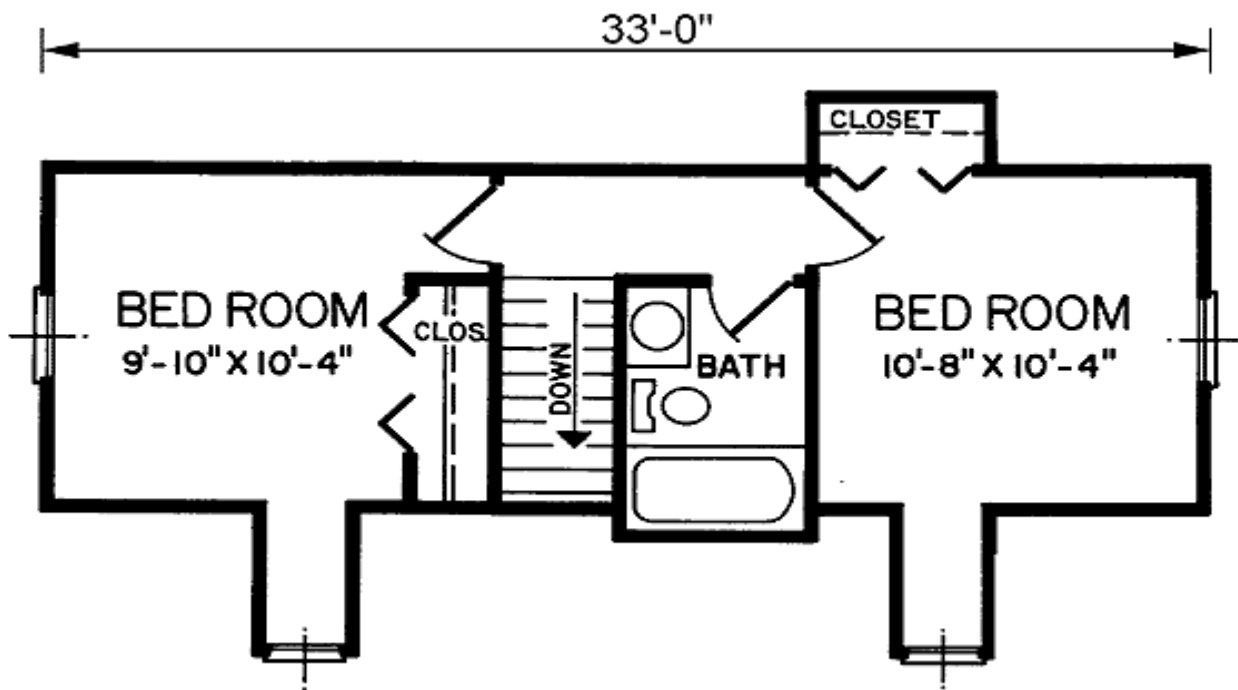
Special Features: PDF, Narrow Lot, CAD Available, 1st Floor Master Suite

One Set	Five Sets	Eight Sets	Reproducible	PDF File	CAD
\$445	\$575	\$695	\$675	\$675	\$1,150

## Main Level



2nd Level



Sides/Rear



RIGHT SIDE ELEVATION



REAR ELEVATION



LEFT SIDE ELEVATION