

## Plan W31138D: Double Columned Porches & Options



House plans are Copyright © 2009 by our architects and designers.

- This compact two-story home plan has a slender footprint that suits it to a narrow lot. Off the master bedroom, a balcony atop the front porch adds architectural interest as well as outdoor living space.
- The two-story entry reveals 10' ceilings on the first floor and 9' ceilings upstairs. The living room, dining room and kitchen flow together.
- At the top of the stairway on the second floor is a seating area, the master suite with walk-in closet and a second bedroom and bath.
- Foundation options: basement, slab or crawl space. Specify when ordering.
- Related Plans: Get an attached garage with house plan 31011D (1,387 sq. ft.).
- Need something smaller? See house plan 3089D (1,565 sq. ft.).

Style: Cottage, Country, Traditional

Total Living Area: 1808

Main Flr.: 1120

2nd Flr.: 688

Front Porch: 121 sq. ft.

Rear Porch: 30 sq. ft.

Total Square Feet: 1,959 sq. ft.

Bedrooms: 3

Full Bathrooms: 3

Half Bathrooms: 1

Width: 34'11"

Depth: 55'

Exterior Walls: 2x4

Ceiling Height:

Main Floor: 10'

2nd Floor: 9'

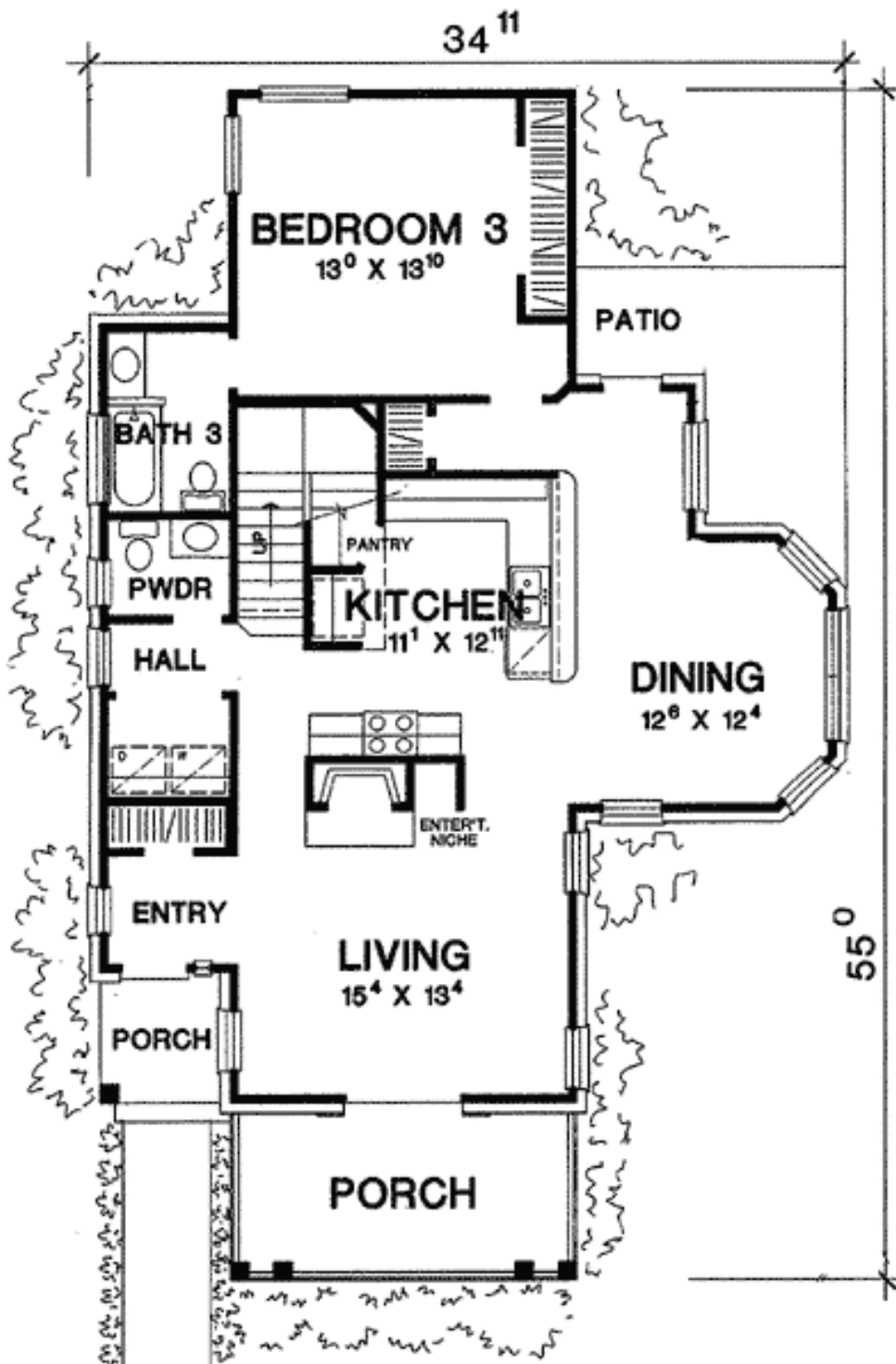
Other: 9' and 10' vary on 1st floor

Standard Foundations: Slab, Basement, Crawl

Special Features: Den-Office-Library-Study, Narrow Lot, CAD Available, Photo Gallery

One Set	Five Sets	Eight Sets	Reproducible	CAD
\$510	\$565	\$620	\$795	\$1,765

## Main Level



2nd Level

