

Plan W8074LB: Unique Contemporary Plan



House plans are Copyright © 2009 by our architects and designers.

- Wood, glass and sloping roof lines create interesting appeal in this contemporary house plan, perfect for a lot sloping up from the street. Unusual is the wonderful master suite occupying the upper floor. esigned for comfort, entertaining and casual relaxation, decks are off of the informal living room and dining room.
- The spacious living room has a 17-ft., 5-in. vaulted ceiling and a wonderful corner stone-faced fireplace and hearth.
- The kitchen, a gourmet's delight and loaded with lots of conveniences and a breakfast bar, opens into the dining room with its beautiful bay window.
- Two bedrooms are privately located to the right and share a skylighted bath.
- Stairs leading to the master bedroom suite overlook the living room and the vaulted entry. The vaulted master bedroom and sitting area has its own "morning deck", fireplace and a wood carving/hobby room.
- The luxurious and spacious master bath features a skylighted whirlpool tub and a separate shower. The oversized garage has direct access to the main level of the house plan.
- Foundation: crawl space.

Style: Contemporary, Northwest

Total Living Area: 2162

Main Flr.: 1338

2nd Flr.: 763

Additional Garage Level:

Total Square Feet: 2,790 sq. ft.

Attached Garage: 2 Car, 587 sq. ft.

Bedrooms: 3

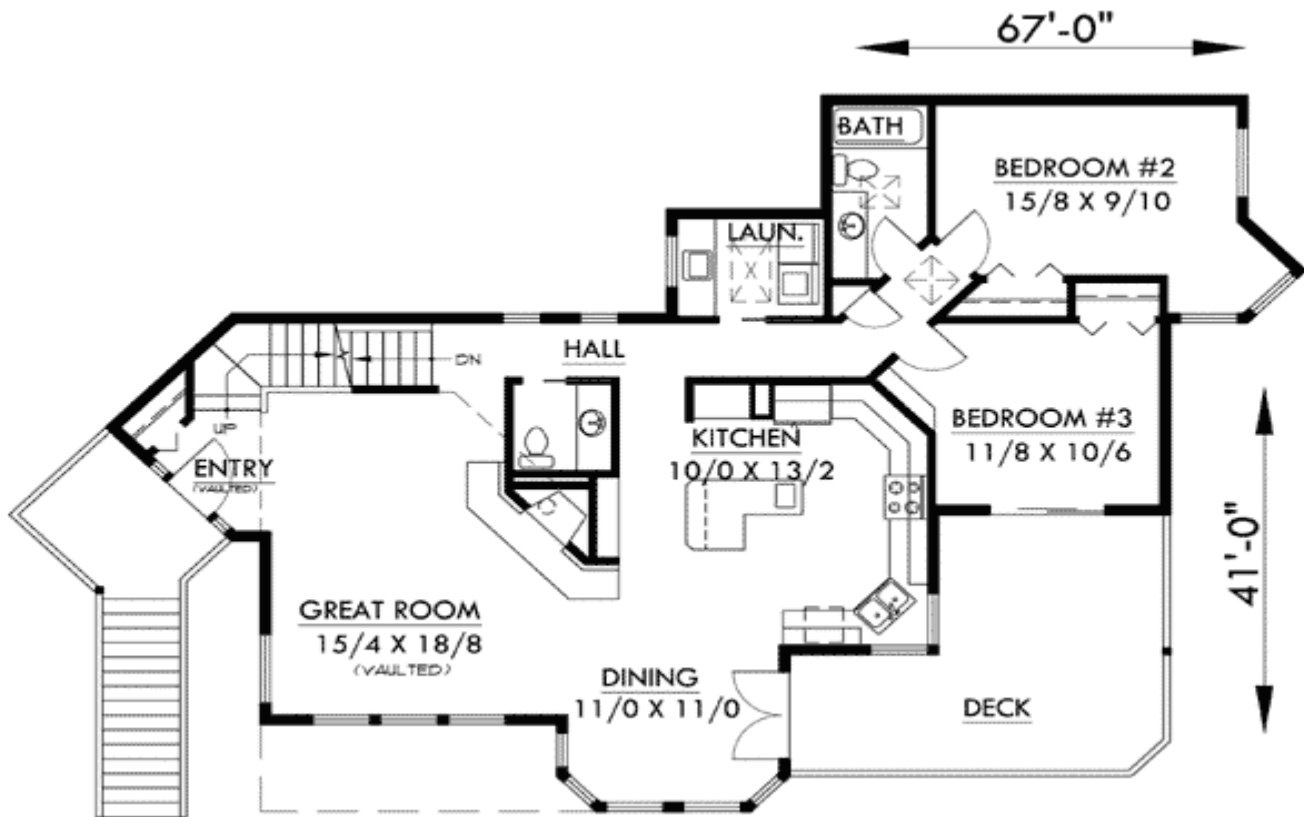
Full Bathrooms: 2

Half Bathrooms: 1

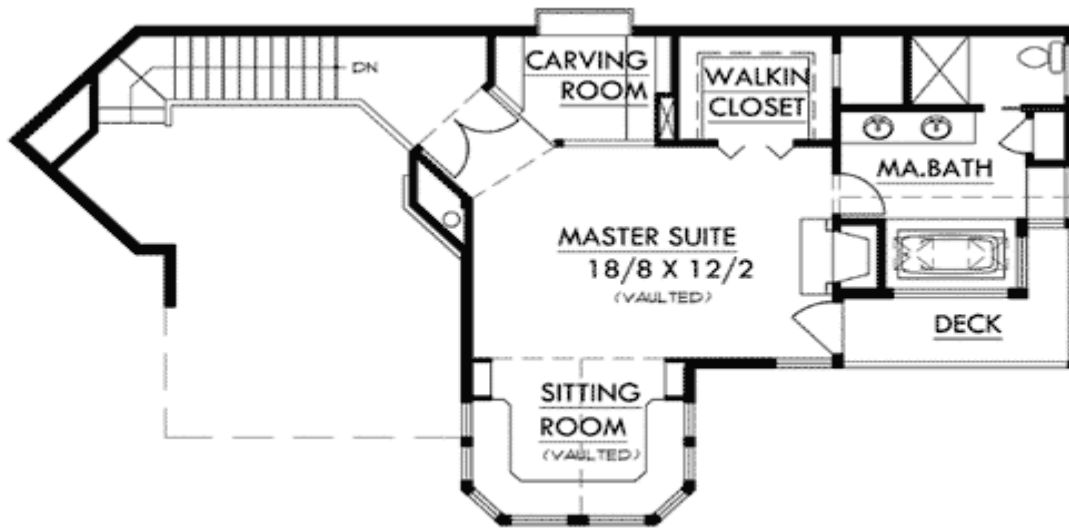
Width: 67'  
Depth: 41'  
Exterior Walls: 2x4  
Ceiling Height:  
Standard Foundations: Crawl  
Special Features: CAD Available

One Set	Five Sets	Eight Sets	Reproducible	CAD
\$425	\$575	\$665	\$775	\$1,150

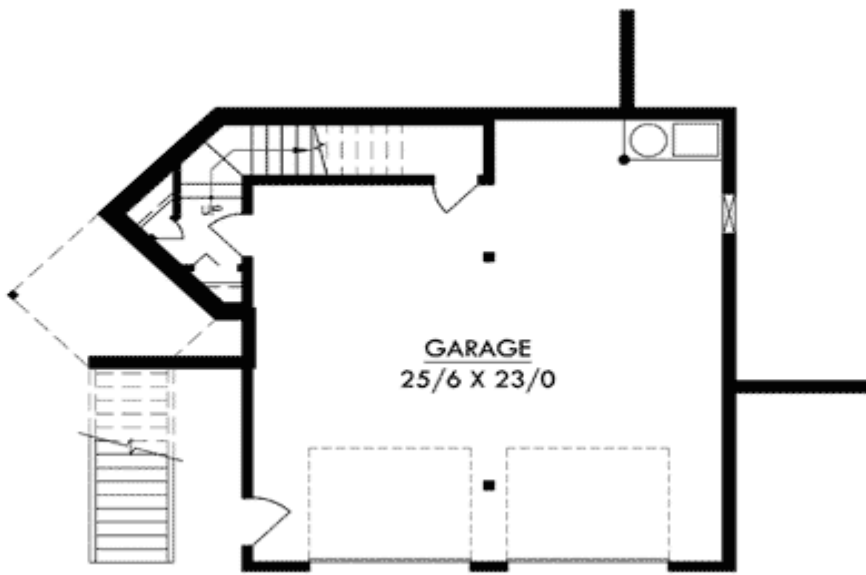
## Main Level



2nd Level



Lower Level



Elevation #2

