

Plan W3403VL: Adult Privacy in Farmhouse Plan



House plans are Copyright © 2009 by our architects and designers.

- Covered porches are found in both the front and the rear of this farmhouse . Inside, 9-foot ceilings are standard, with an 11-foot step-up ceiling in the fireplaced living room.
- A study is found on one side of the foyer. On the other side is a formal dining room, conveniently close to the kitchen. In back, an eating nook sits in a windowed bay.
- Ideal for quick snacks, the angled eating bar separates the kitchen from the nook and the living room. Notice the planning desk in one corner of the kitchen.
- Accessed via a short hallway and tucked away behind the garage, the master suite offers maximum privacy to its occupants. In the spacious master bath, a whirlpool tub is placed between his and her walk-in closets. The bath also contains twin vanities and a walk-in shower with a seat.
- On the other side of the house, the second full bath serves two family bedrooms.
- Foundation: slab or crawl space.
- Related Plans: For a smaller version with a side-entry garage, see house plan 3408VL (1,771 sq. ft.).
- Gain a bedroom with house plan 3424VL (2,519 sq. ft.).

Style: Country, Farmhouse, Traditional

Total Living Area: 2069

Main Flr.: 2069

Porch, Combined: 374 sq. ft.

Total Square Feet: 2,924 sq. ft.

Attached Garage: 2 Car, 481 sq. ft.

Bedrooms: 3

Full Bathrooms: 2

Half Bathrooms: 1

Width: 70'

Depth: 58'8"

Maximum Ridge Height: 24'

Exterior Walls: 2x4

Ceiling Height:

Main Floor: 9'

Other: 11' Living Room

Standard Foundations: Slab, Crawl
Special Features: 1st Floor Master Suite, Photo Gallery

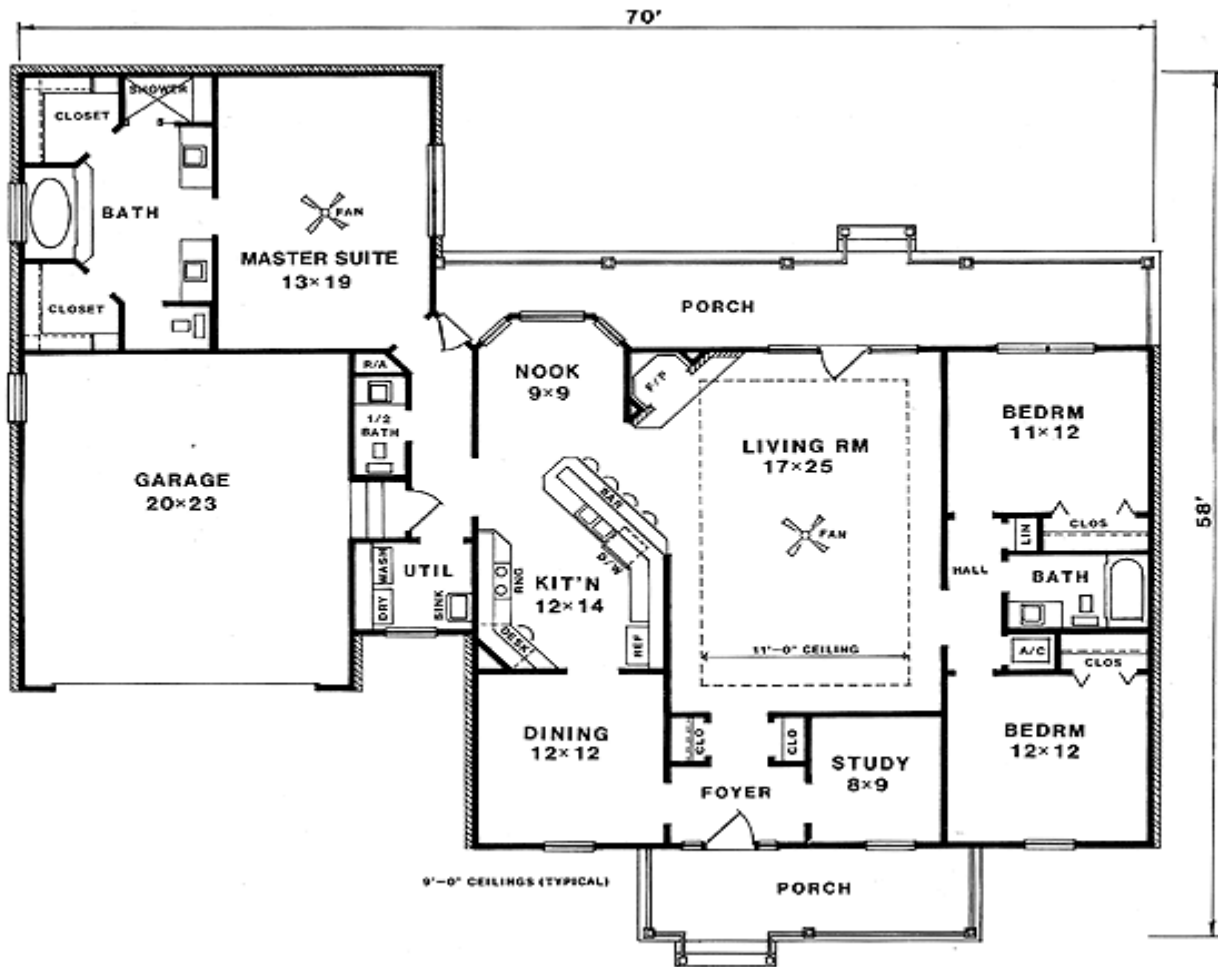
One Set
\$525

Five Sets
\$645

Eight Sets
\$725

Reproducible
\$745

Main Level



Architectural Designs ...selling quality house plans for over 30 years.

Photo



Architectural Designs ...selling quality house plans for over 30 years.

Elevation #2

