

Plan W5009CZ: Impressive Entry



House plans are Copyright © 2009 by our architects and designers.

- Combined with a facade of siding and stacked stone, a two-story entry with built-in seats makes for an impressive introduction to this neo-traditional dwelling. Echoing the exterior arches, arched openings throughout the first floor separate the living spaces.
- A balcony on the second level overlooks the entry below, where straight ahead guests glimpse the living-dining room. In the informal area, the efficient kitchen layout maximizes cabinet space. An angled peninsula counter separates the kitchen from the bayed dinette and the cozy hearth room with its fireplace next to shelving.
- The private master suite with an oversized walk-in closet, features vaulted ceilings. The five-fixture master bath includes a corner garden tub, just right for soaking away your cares.
- Two family bedrooms and a full bath comprise the second story. Plans for a fourth bedroom are available.
- Foundation: basement standard. Nine-foot ceilings are found on the main level unless otherwise noted.

Style: European, Traditional

Total Living Area: 1664

Main Flr.: 1228

2nd Flr.: 462

Total Square Feet: 2,126 sq. ft.

Attached Garage: 2 Car, 436 sq. ft.

Bedrooms: 3

Full Bathrooms: 2

Half Bathrooms: 1

Width: 49'

Depth: 47'4"

Maximum Ridge Height: 27'6

Exterior Walls: 2x4

Optional Exterior Walls: 2x6 \$150

Ceiling Height:

Main Floor: 9'

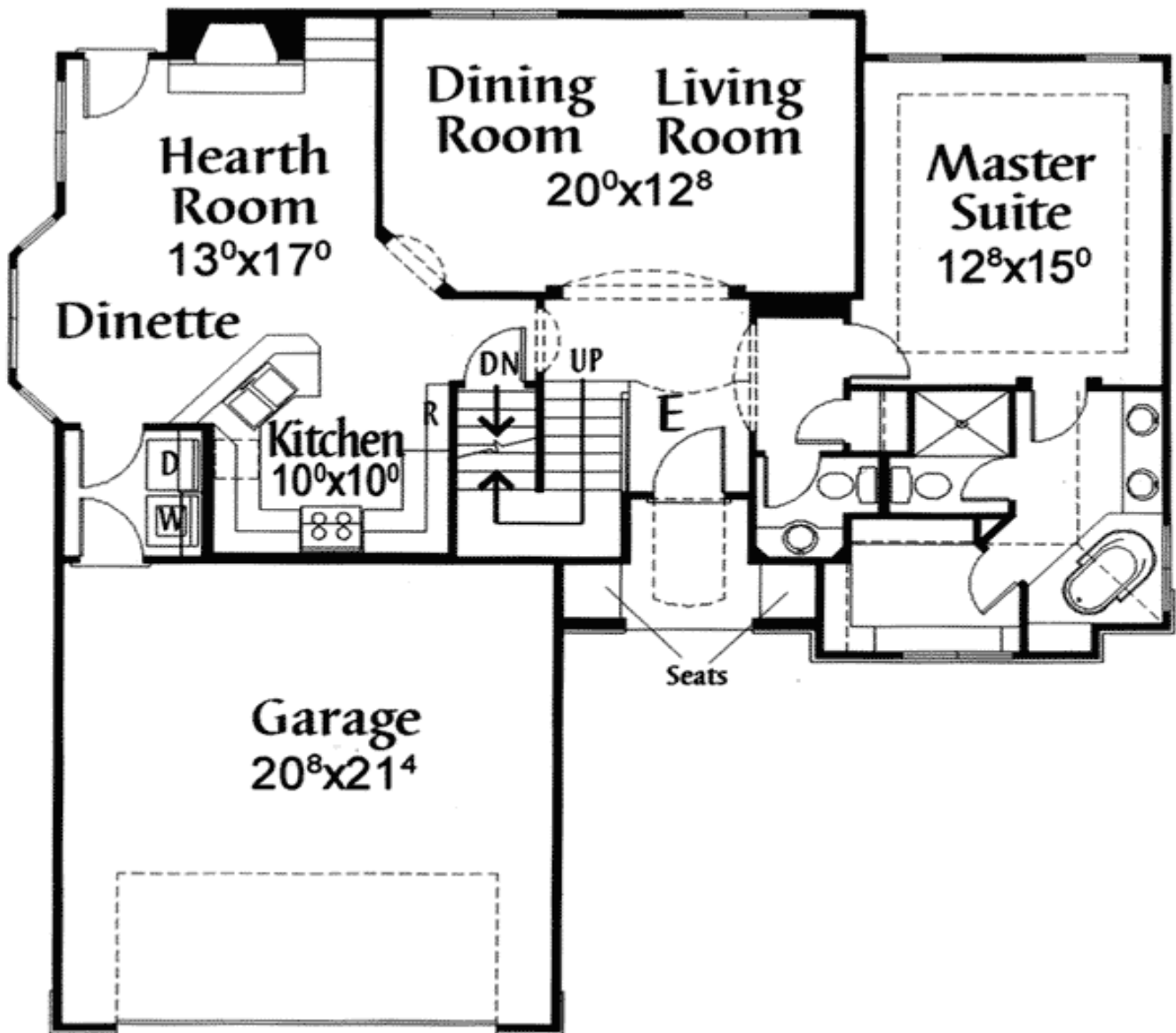
Standard Foundations: Basement

Alternate Foundations: Slab (\$300), Crawl (\$200)

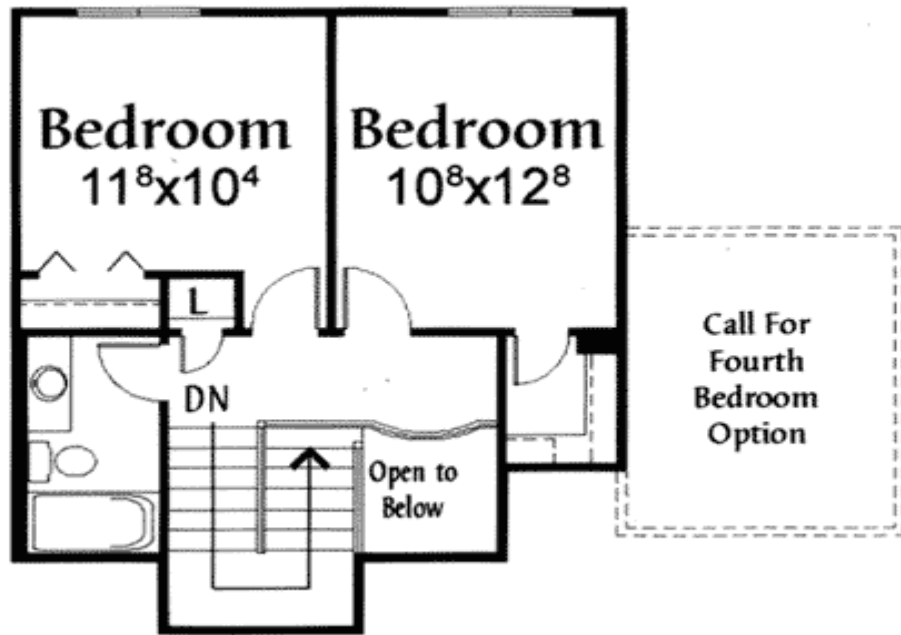
Special Features: CAD Available, Narrow Lot, 1st Floor Master Suite

One Set	Five Sets	Eight Sets	Reproducible	CAD
\$645	\$795	\$885	\$795	\$2,500

Main Level



2nd Level



Rear View

