

Architectural Designs ...selling quality house plans for over 30 years.

Plan W2132DR: One or Two Bedrooms



House plans are Copyright © 2009 by our architects and designers.

- This graceful European design offers a choice of one or two bedrooms.
- A modified formal entry greets you to a welcoming layout with dining room, family room with fireplace, and kitchen-breakfast area.
- The fireplace warms both the dining room and the family room. The kitchen is large enough for a breakfast area.
- The one-bedroom option includes a laundry room as well as twin sinks in the large bath. A whirlpool tub is included in both options.
- Related Plans: See these related house plans - 21806DR, 21453DR (turret feature) and 2194DR (brick in reverse layout).

Style: Canadian, European, Metric

Total Living Area: 1231

Main Flr.: 1231

Basement Unfinished: 1,231 sq. ft.

Covered Patio: 46 sq. ft.

Patio:

Total Square Feet: 2,768 sq. ft.

Attached Garage: 1 Car, 306 sq. ft.

Bedrooms: 2

Full Bathrooms: 1

Width: 39'

Depth: 45'

Maximum Ridge Height: 25'8"

Exterior Walls: 2x6

Ceiling Height:

Main Floor: 8'

Standard Foundations: Basement

Alternate Foundations: Slab (no charge), Crawl (no charge)

Special Features: PDF, CAD Available, Narrow Lot, 1st Floor Master Suite

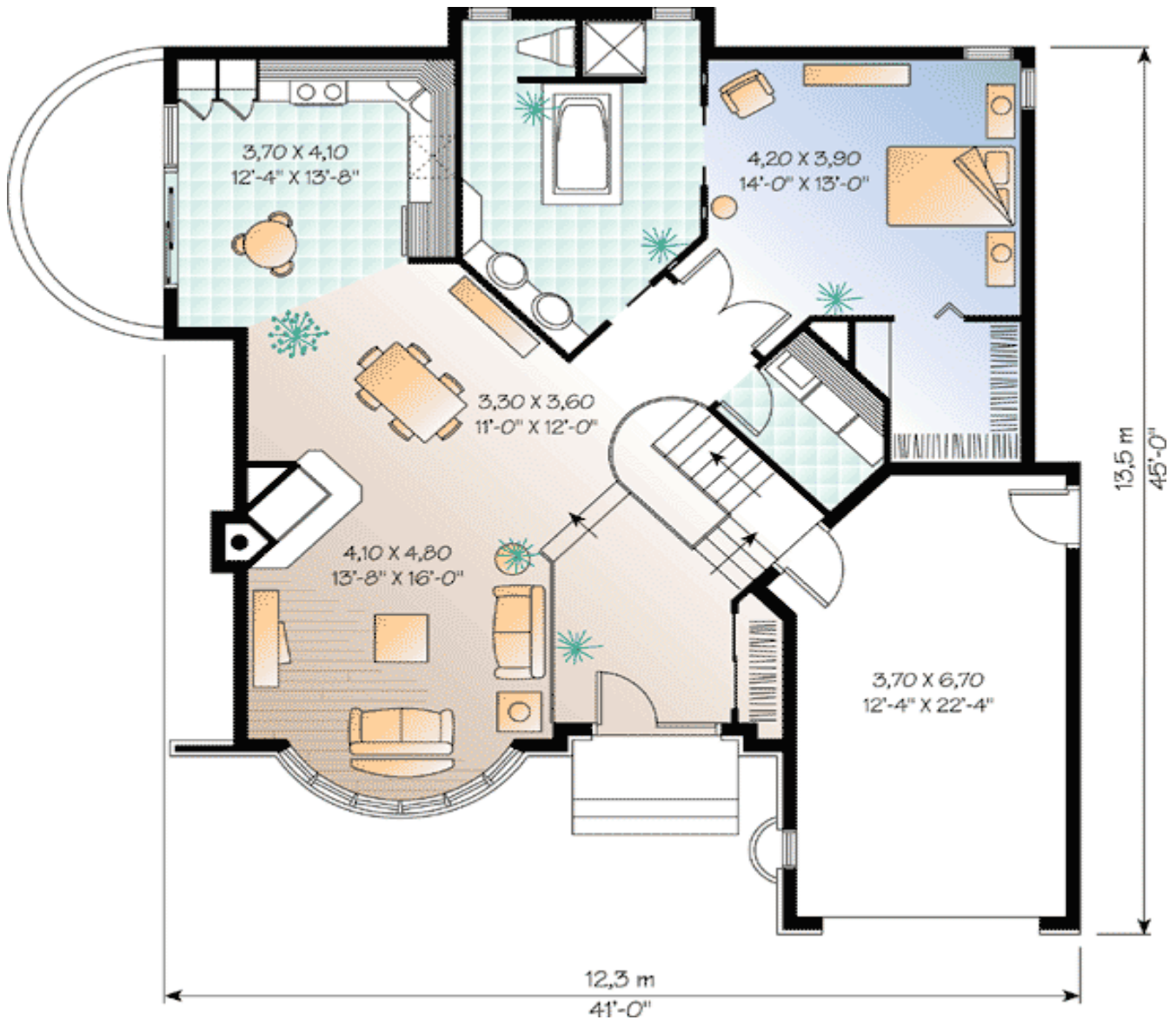
One Set
\$485

Five Sets
\$545

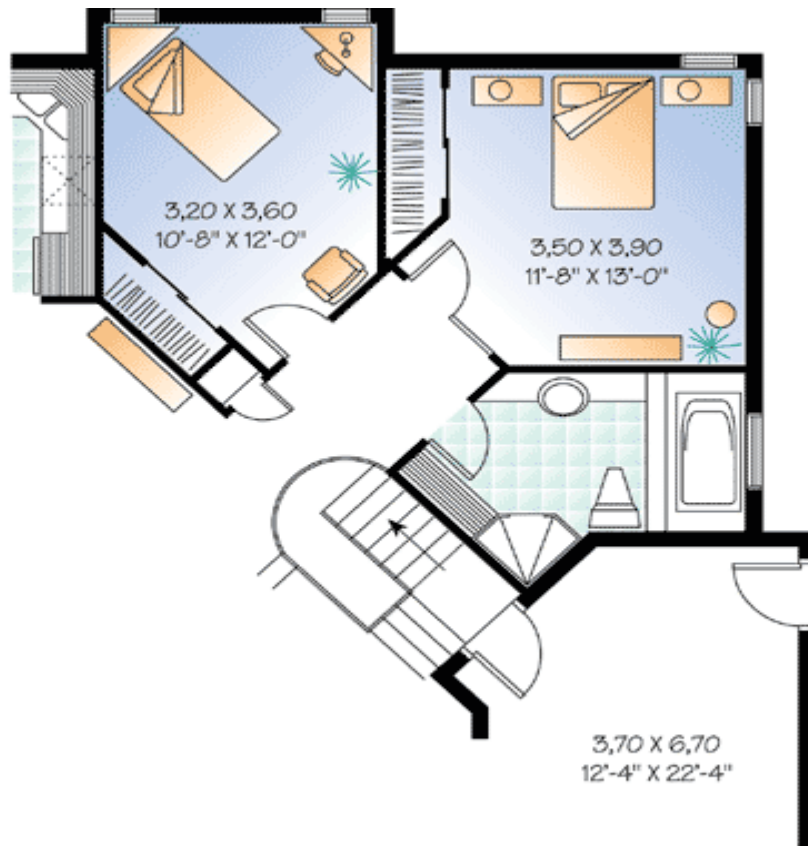
Eight Sets
\$590

Reproducible
\$710

Main Level



Optional



Rear View

