

Architectural Designs ...selling quality house plans for over 30 years.

Plan W57150HA: Charming Three-Bedroom Home Plan



House plans are Copyright © 2009 by our architects and designers.

- Delightful appearance with protective porch.
- The entry, with convenient stair to basement, leads to a spacious living and dining room open to the adjacent kitchen.
- The master bedroom enjoys double entry doors, walk-in closet and a private bath with its own linen closet.
- Two secondary bedrooms of generous size and a hall bath comprise the first floor.

Style: Traditional

Total Living Area: 1140

Main Flr.: 1140

Basement Unfinished: 1,140 sq. ft.

Total Square Feet: 2,640 sq. ft.

Attached Garage: 2 Car, 360 sq. ft.

Bedrooms: 3

Full Bathrooms: 2

Width: 38'

Depth: 50'

Maximum Ridge Height: 20'

Exterior Walls: 2x4

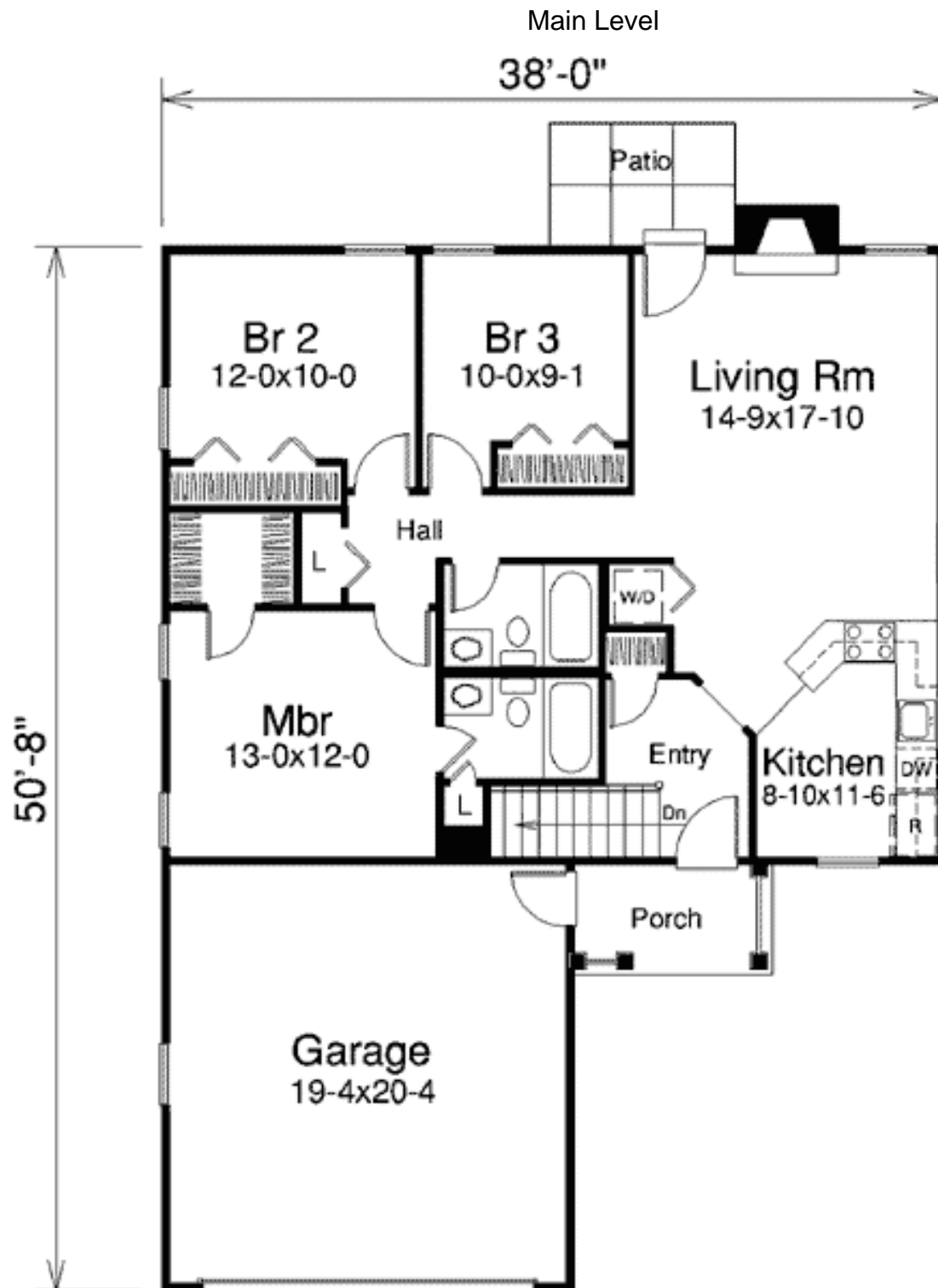
Ceiling Height:

Main Floor: 8'

Standard Foundations: Slab, Basement, Crawl

Special Features: CAD Available, Narrow Lot, PDF, 1st Floor Master Suite

One Set	Five Sets	Eight Sets	Reproducible	PDF File	CAD
\$410	\$510	\$610	\$695	\$695	\$1,250



Sides/Rear

