

Architectural Designs ...selling quality house plans for over 30 years.

Plan W43006PF: Petite Cottage



House plans are Copyright © 2009 by our architects and designers.

- This petite Carpenter Gothic charmer would make an ideal vacation house or a starter house for the young family.
- This exterior boasts a heavy wood shingled roof, board and batten siding and decorative scroll sawn rake detailing.
- The delicately bracketed but very practical porch provides seating for relaxing on warm summer nights.
- The interior is simplicity itself: a double door entry opens to an all encompassing living, dining, and kitchen area. The kitchen is hidden from the living room by a self standing stairway.
- The upstairs is divided into two bedrooms, each with plenty of closet space. A wainscot paneled bathroom completes the plan.

Style: Cottage, Tudor

Total Living Area: 896

Main Flr.: 448

2nd Flr.: 448

Total Square Feet: 896 sq. ft.

Bedrooms: 2

Full Bathrooms: 1

Half Bathrooms: 1

Width: 16'

Depth: 28'

Maximum Ridge Height: 27'2"

Exterior Walls: 2x4

Ceiling Height:

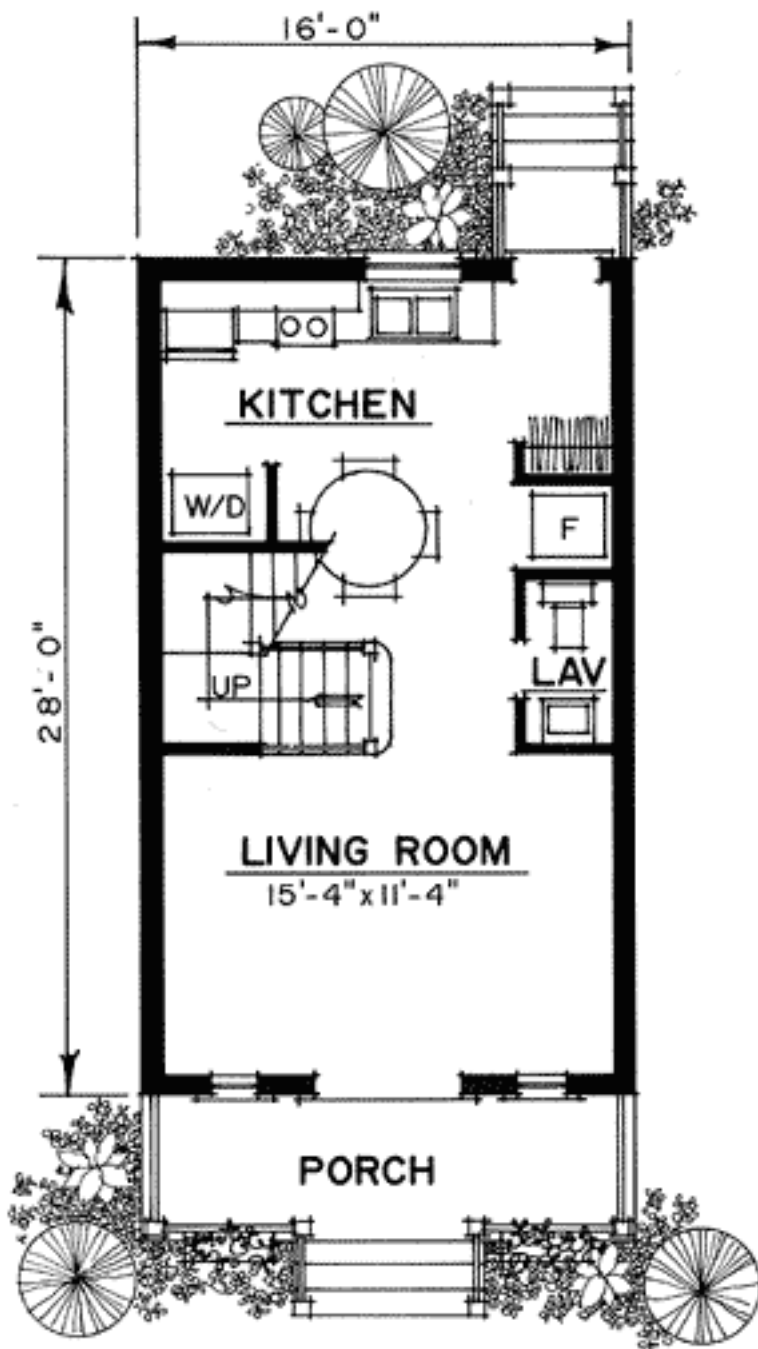
Main Floor: 8'

2nd Floor: 9'

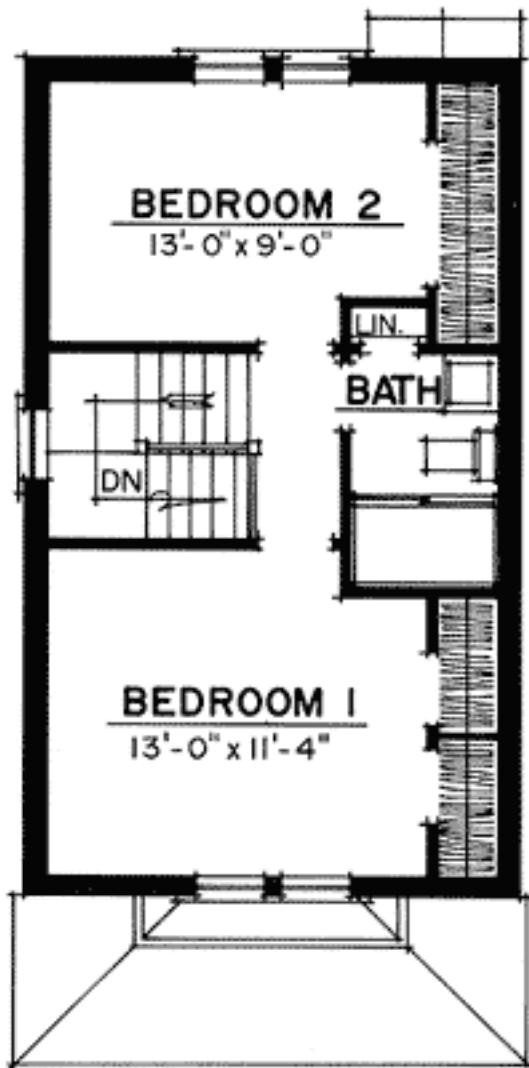
Standard Foundations: Crawl
Special Features: Narrow Lot, PDF

One Set	Five Sets	Eight Sets	Reproducible	PDF File
\$395	\$460	\$505	\$605	\$605

Main Level



2nd Level



Rear View

