

Plan W2395JD: Small House Plan with Two Exterior Choices



House plans are Copyright © 2009 by our architects and designers.

- A front porch graces the front of this quaint cottage house plan. The simple and livable design features an open floor plan formed by the living room, kitchen and dining room. A single bedroom is tucked into the corner on this floor.
- Upstairs you'll find the master bedroom and bath. A perfect retreat in a perfect cottage design.
- Related Plans: For an alternate exterior, see house plan 2396JD.
- Additional fees apply when building in the State of Washington. Contact us for more information.

Style: Cottage, Northwest

Total Living Area: 1000

Main Flr.: 650

2nd Flr.: 350

Front Porch: 76 sq. ft.

Total Square Feet: 1,076 sq. ft.

Bedrooms: 2

Full Bathrooms: 2

Width: 24'

Depth: 30'

Maximum Ridge Height: 20'3"

Exterior Walls: 2x6

Ceiling Height:

Main Floor: 8'1"

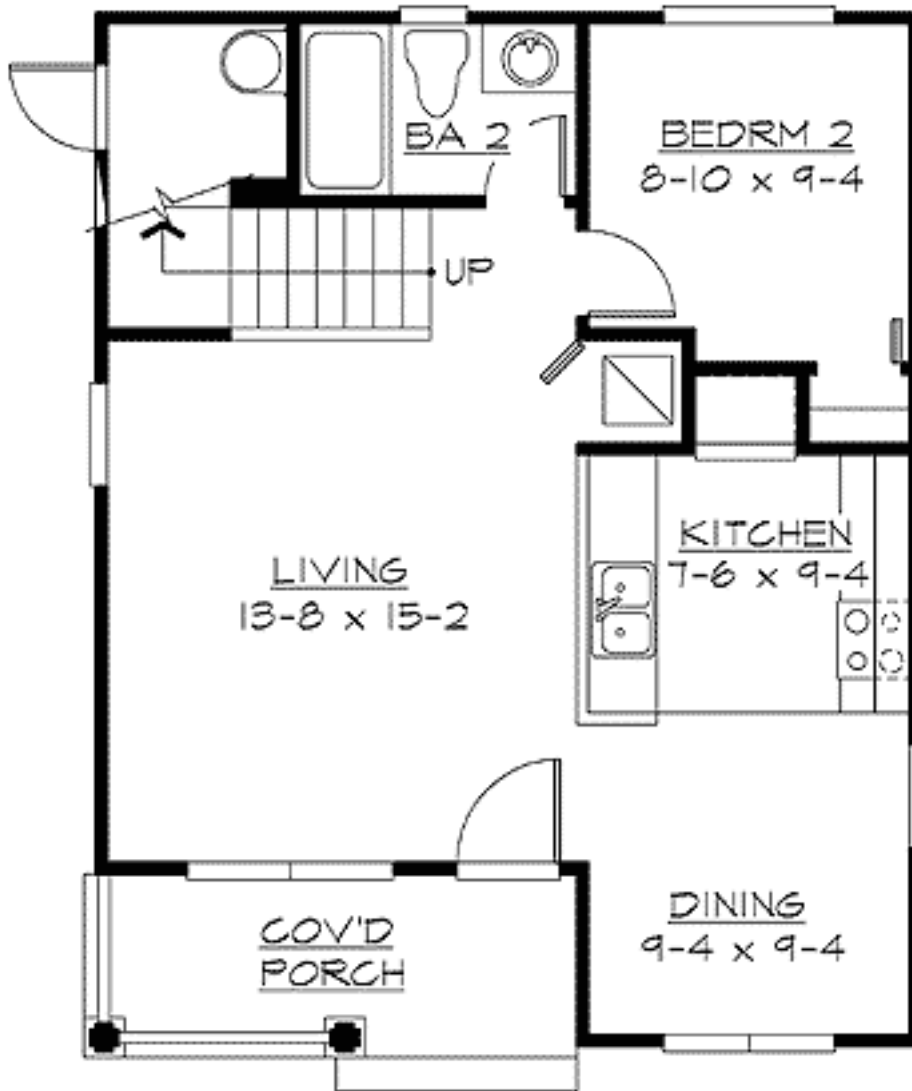
2nd Floor: 7'9"

Standard Foundations: Crawl

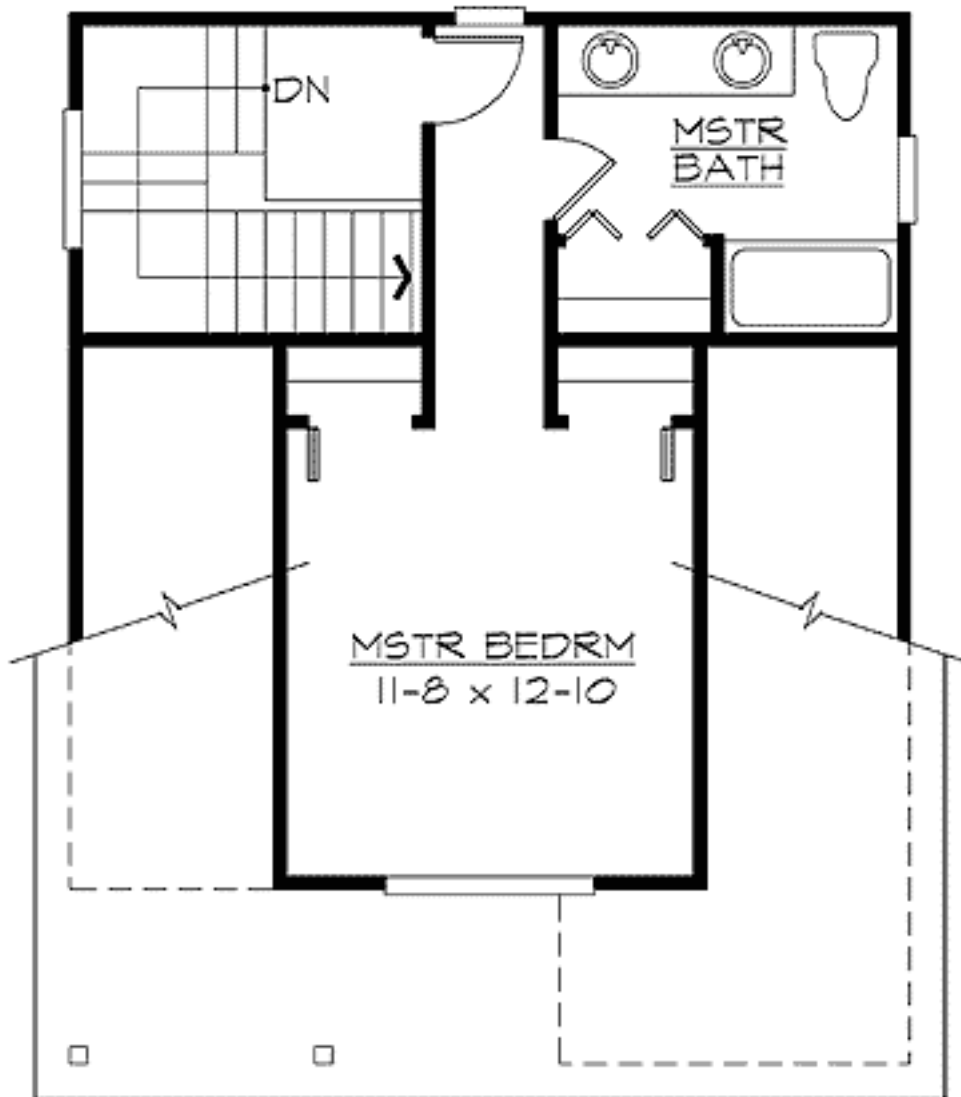
Special Features: CAD Available, Narrow Lot, Photo Gallery, PDF

One Set	Five Sets	Eight Sets	Reproducible	PDF File	CAD
\$550	\$595	\$650	\$850	\$850	\$1,350

Main Level



2nd Level



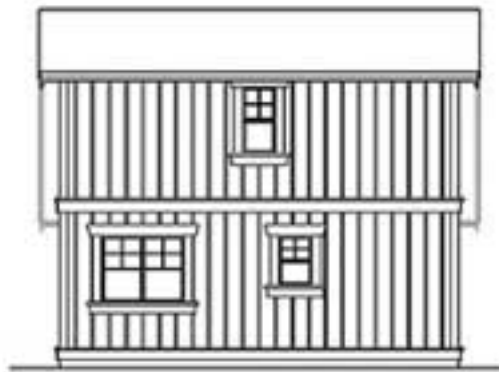
Elevation #2



Rear View



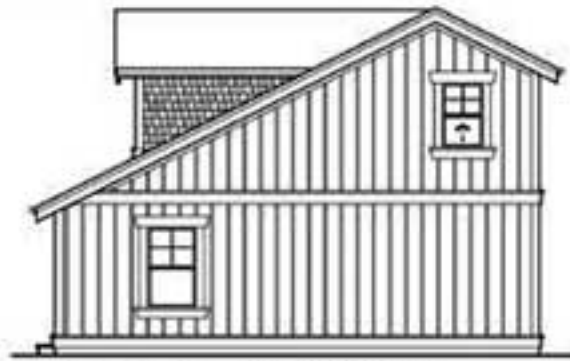
## Sides/Rear



REAR ELEVATION



LEFT ELEVATION



RIGHT ELEVATION