

Architectural Designs ...selling quality house plans for over 30 years.

Plan W11712HZ: Elegant 4 Bedroom House Plan with Options



House plans are Copyright © 2009 by our architects and designers.

- An elegant exterior on this elegant 4 bedroom house plan gives the home a gracious feel.
- A large formal dining has a tray ceiling with a separate breakfast/keeping room for informal meals.
- The great room has raised ceilings and a gas log fireplace. Sliding doors on both sides of the fireplace open to your rear covered porch.
- The large master suite, also with a tray ceiling, features separate his-and-her closets, a spa tub, shower and dual sinks.
- This house plan also includes a bonus room that could be used for as a fifth bedroom or game room. Large, covered porches are great for outdoor entertaining.
- Related Plans: For an alternate exterior see house plan 11713HZ.
- For a 3 bedroom version, see house plan 11711HZ (2,400 sq. ft.).

Style: European, French Country, Metric

Total Living Area: 2500

Main Flr.: 2500

Bonus: 342 sq. ft.

Front Porch: 186 sq. ft.

Rear Porch: 139 sq. ft.

Storage: 102 sq. ft.

Total Square Feet: 3,789 sq. ft.

Attached Garage: 2 Car, 530 sq. ft.

Bedrooms: 4

Full Bathrooms: 3

Half Bathrooms: 1

Width: 80'8"

Depth: 51'

Maximum Ridge Height: 25'10"

Exterior Walls: 2x4

Optional Exterior Walls: 2x6 \$225

Ceiling Height:

Main Floor: 9'

Other: 10' Study & Foyer; 11' Tray Great Room & Dining Room; 10' Tray BR

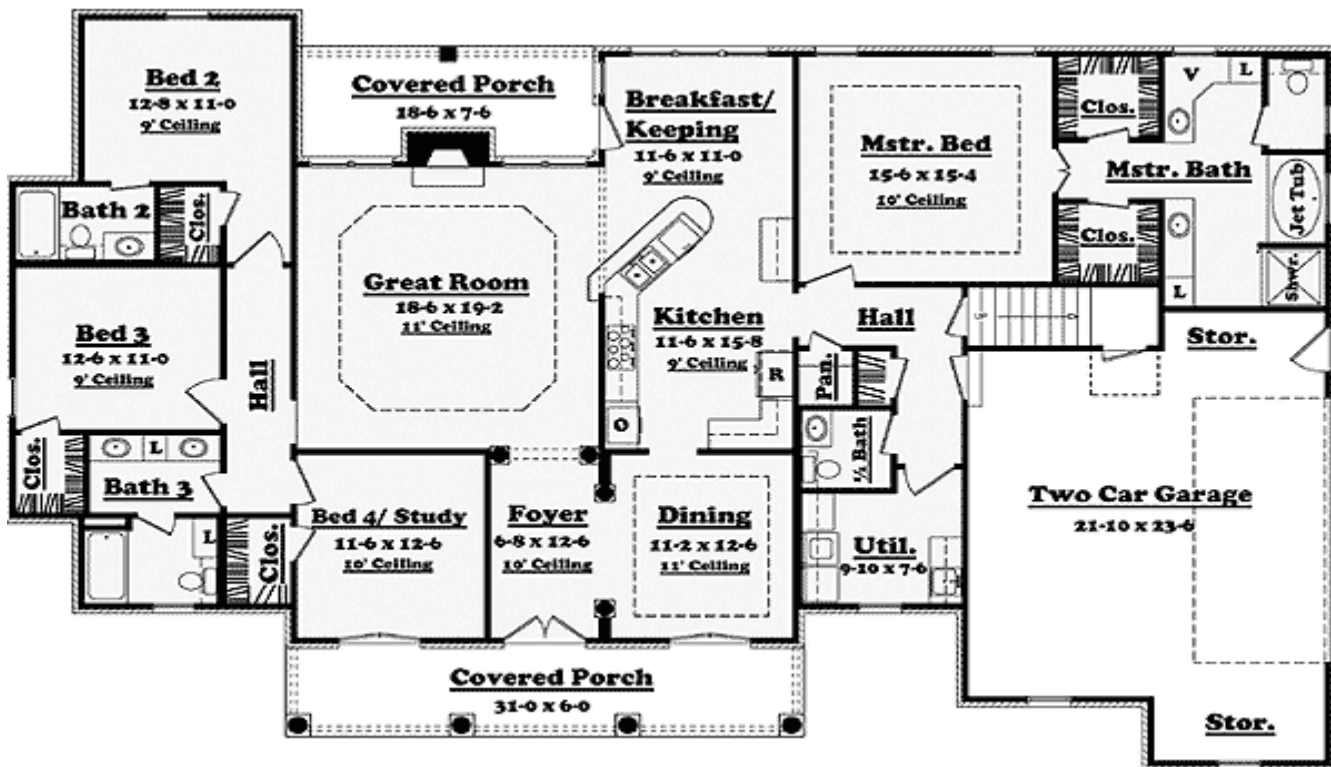
Standard Foundations: Slab, Crawl

Alternate Foundations: Basement (\$225)

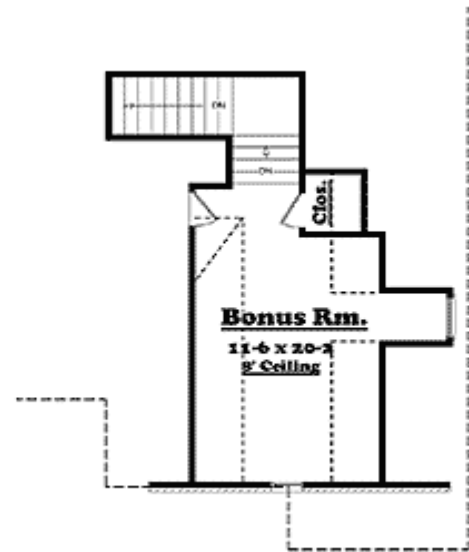
Special Features: PDF, Bonus Room, Split Bedrooms, Corner Lot, Den-Office-Library-Study, Photo Gallery, CAD Available, 1st Floor Master Suite

One Set	Five Sets	Eight Sets	Reproducible	PDF File	CAD
\$595	\$725	\$795	\$895	\$895	\$1,345

Main Level



Bonus



Photo



Elevation #2



Rear View

