

Architectural Designs ...selling quality house plans for over 30 years.

Plan W59044ND: Quaint Log Home Plan



House plans are Copyright © 2009 by our architects and designers.

- This quaint little log home plan has a cozy covered porch in front perfect for a swing.
- The living room opens to the loft above providing natural light throughout. The dining/kitchen area has access to rear grilling porch.
- To the left is a bedroom with a lovely bay window and walk-in closet.
- Upstairs you will find an additional bedroom and loft with ample closet space.
- Foundation: Basement, crawl space, daylight basement. Please specify your preference when ordering.
- Related Plan: For the stick-framed version of this house plan, see 59373ND.

Style: Log, Mountain

Total Living Area: 977

Main Flr.: 609

2nd Flr.: 368

Front Porch: 232 sq. ft.

Rear Porch: 232 sq. ft.

Total Square Feet: 1,441 sq. ft.

Bedrooms: 2

Full Bathrooms: 1

Width: 29'

Depth: 37'

Maximum Ridge Height: 20'4"

Exterior Walls: Log

Ceiling Height:

Main Floor: 8'

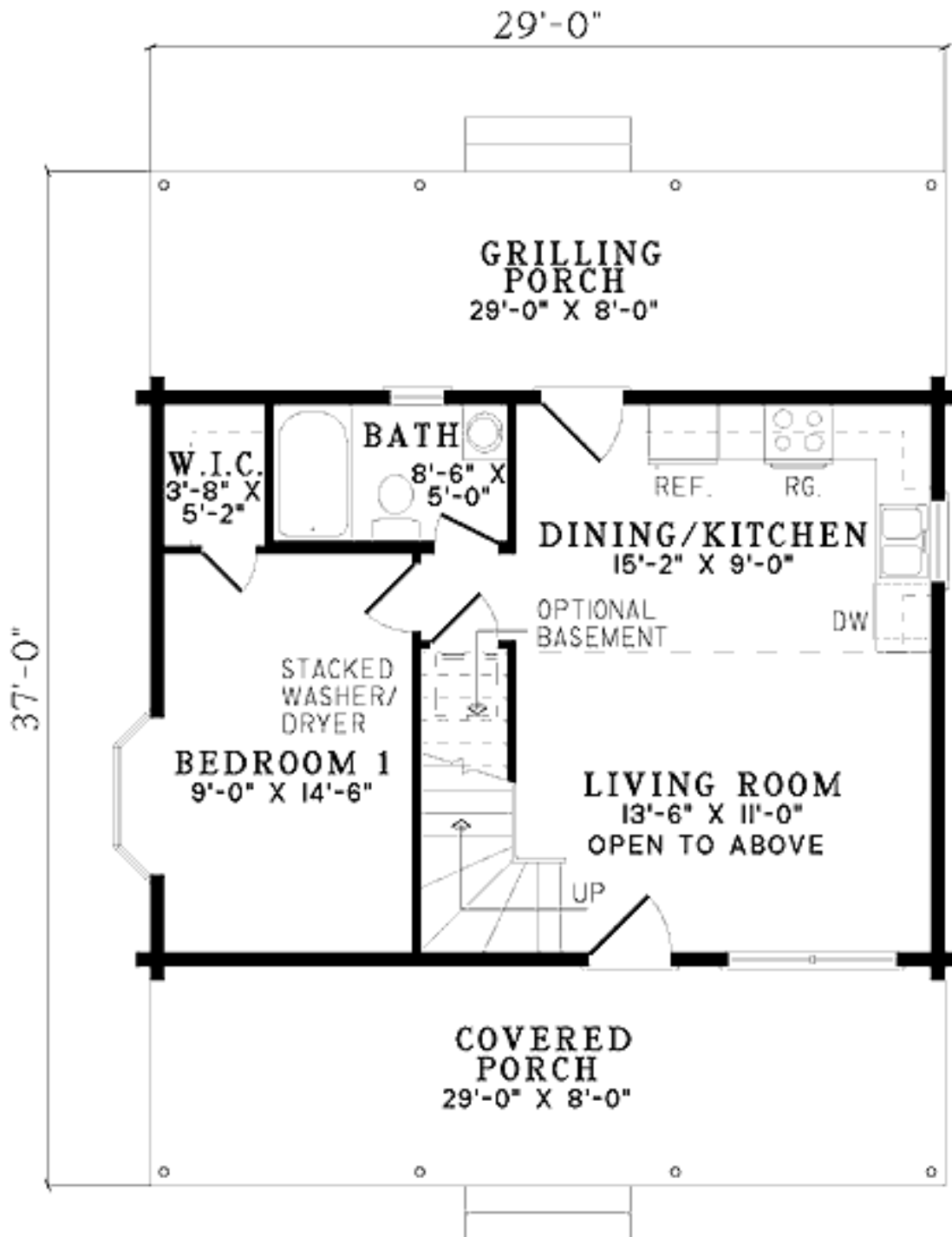
Other: 2-Story Living Room

Standard Foundations: Basement, Crawl

Special Features: PDF, 1st Floor Master Suite, Narrow Lot

One Set	Five Sets	Eight Sets	Reproducible	PDF File	CAD
\$515	\$560	\$585	\$700	\$700	\$1,200

Main Level



2nd Level

