

Architectural Designs ...selling quality house plans for over 30 years.

Plan W6508RF: Award-Winning Design



House plans are Copyright © 2009 by our architects and designers.

- The gabled entry of this award-winning contemporary takes you into a high-ceilinged foyer, an impressive introduction.
- The home is filled with built-ins and other special touches as in the formal dining room with its built-in cabinetry and niches. A study/home office is also accessed from the foyer. The central great room, crowned by a barrel-vaulted ceiling, focuses on a large hearth.
- A central cooktop-eating island is a notable feature of the generously sized kitchen and adjacent breakfast room that has access to a covered patio.
- In the master suite, a raised ceiling lends a spacious feeling in the bedroom, which has private access to the backyard, two walk-in closets and an opulent bath complete with a whirlpool tub.
- Another bath serves the secondary bedrooms and the rest of the house.
- Foundation options: slab, crawl space or basement.

Style: Traditional

Total Living Area: 2437

Main Flr.: 2437

Basement Unfinished: 2,649 sq. ft.

Covered Patio: 214 sq. ft.

Entry: 47 sq. ft.

Total Square Feet: 5,993 sq. ft.

Attached Garage: 2 Car, 646 sq. ft.

Bedrooms: 3

Full Bathrooms: 2

Width: 64'9"

Depth: 59'

Maximum Ridge Height: 26'

Exterior Walls: 2x4

Ceiling Height:

Main Floor: 9'

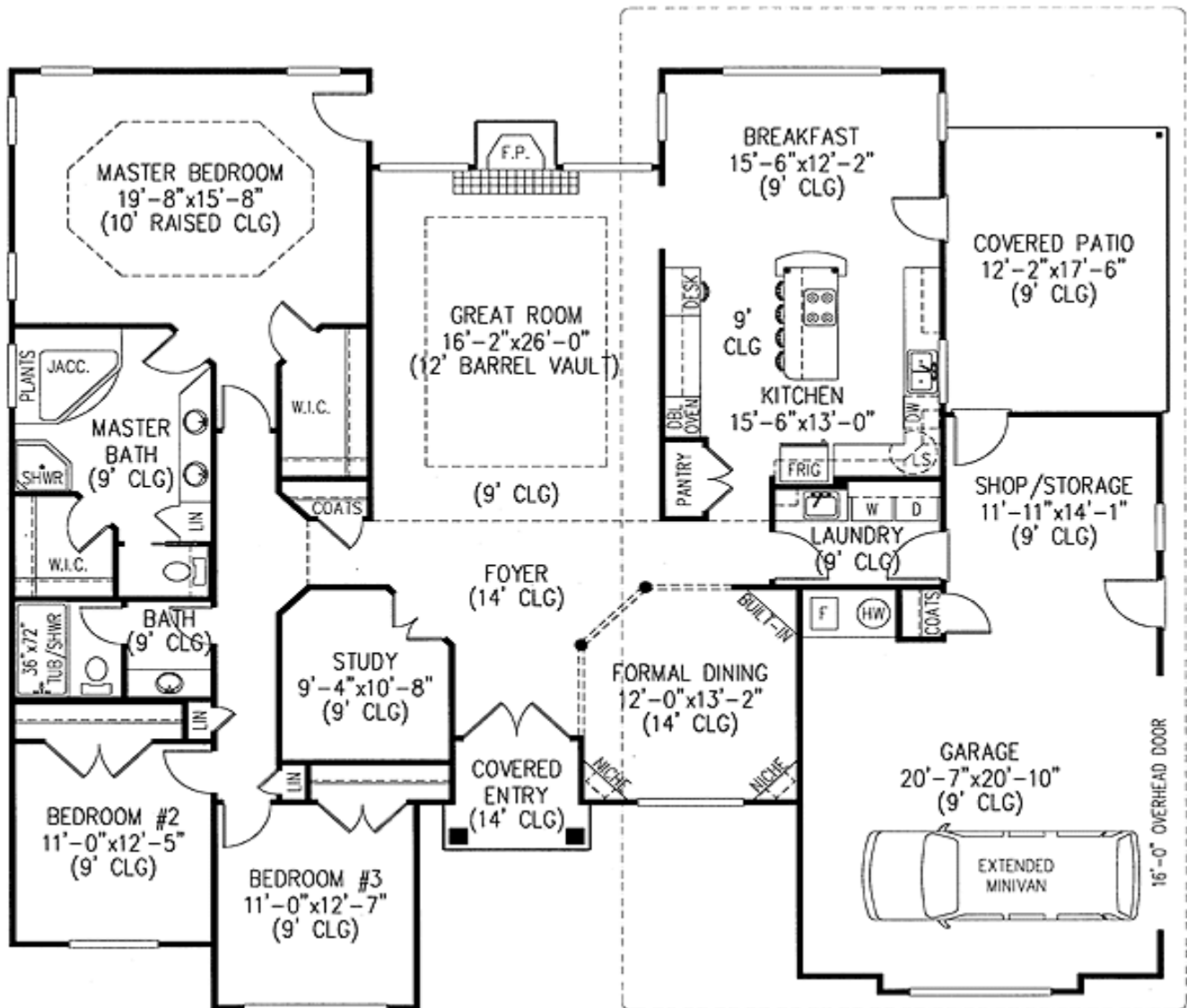
Other: 12' Barrel Vault Living Room; 10' Raised MBR; 14' Foyer, Entry & Dining Room; 8'4" Basement

Standard Foundations: Slab, Basement, Crawl

Special Features: Den-Office-Library-Study, 1st Floor Master Suite, CAD Available

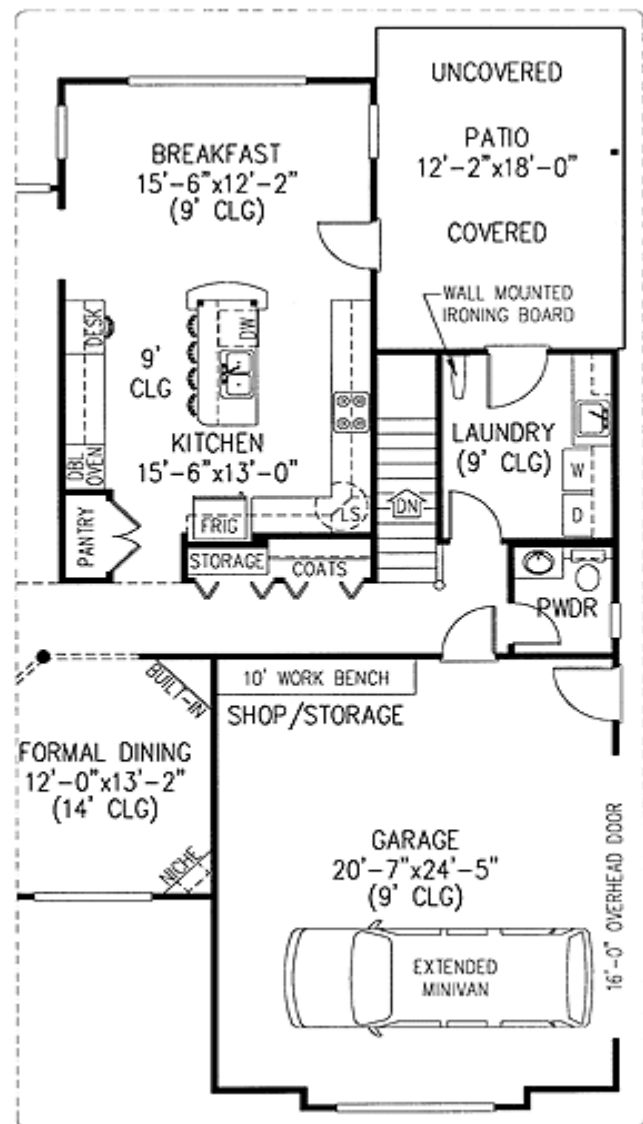
One Set	Five Sets	Eight Sets	Reproducible	CAD
\$665	\$725	\$765	\$915	\$1,315

Main Level



Optional

Basement option



Rear View

