

Architectural Designs ...selling quality house plans for over 30 years.

Plan W14023DT: Prairie Look



House plans are Copyright © 2009 by our architects and designers.

- Kitchen has double ovens, vegetable sink, work island, walk-in pantry and built-in phone desk.
- Main floor master suite, his and her vanities, spa tub and walk-in closet..
- 3-Car Garage with stairs to basement
- Upper bedrooms with window seats and shared bath arrangement.

Style: Country, Craftsman, Prairie Style

Total Living Area: 2970

Main Flr.: 2065

2nd Flr.: 905

Basement Unfinished: 1,828 sq. ft.

Front Porch: 232 sq. ft.

Deck: 198 sq. ft.

Total Square Feet: 3,864 sq. ft.

Attached Garage: 2 Car, 847 sq. ft.

Bedrooms: 4

Full Bathrooms: 4

Width: 76'

Depth: 74'

Maximum Ridge Height: 26'6

Exterior Walls: 2x6

Ceiling Height:

Main Floor: 9'

2nd Floor: 8'

Standard Foundations: Basement

Alternate Foundations: Slab (\$100), Crawl (\$100)

Special Features: CAD Available

One Set
\$580

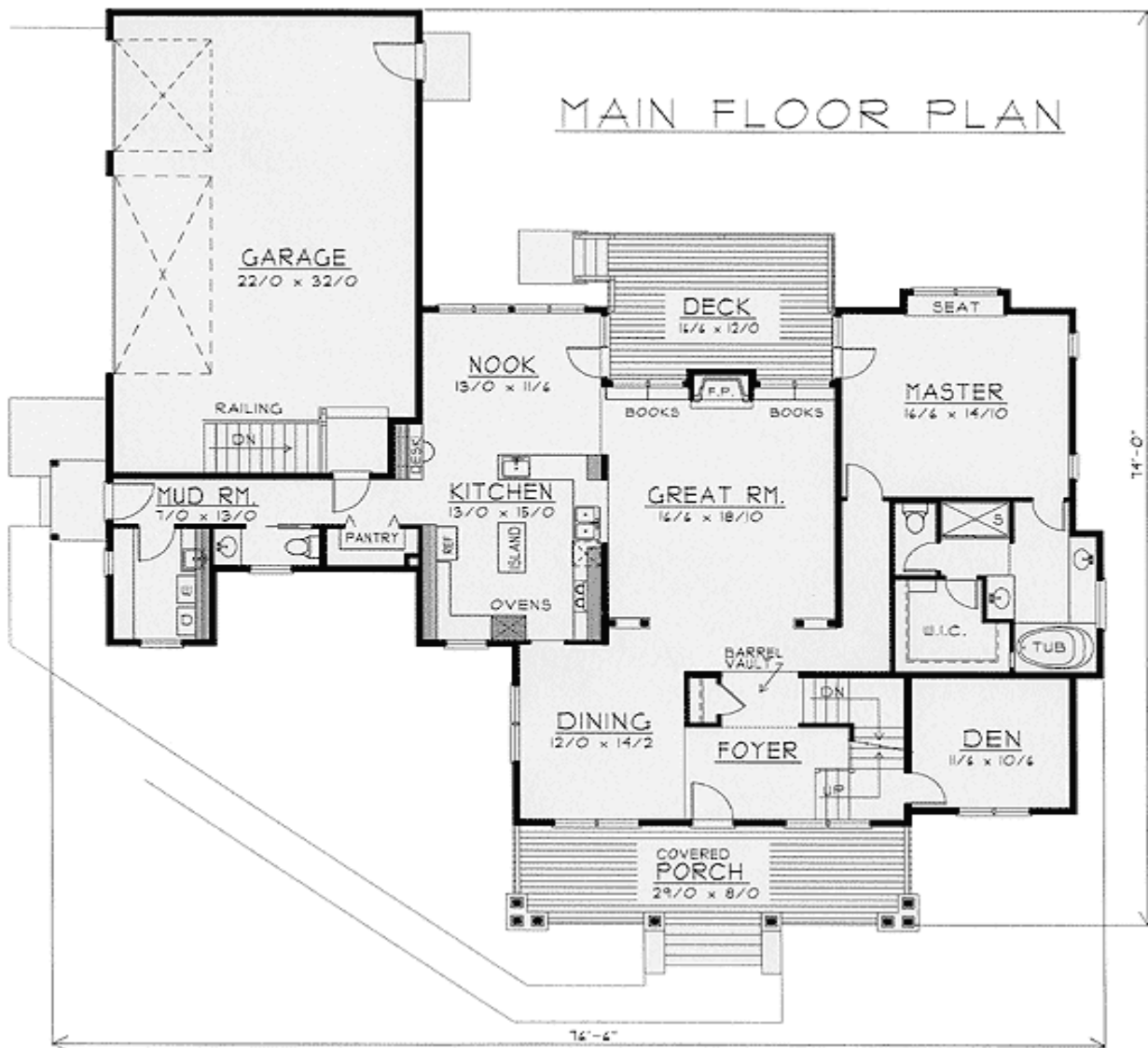
Five Sets
\$660

Eight Sets
\$720

Reproducible
\$980

CAD
\$1,320

Main Level



2nd Level



UPPER FLOOR PLAN

Rear View

