

# Architectural Designs ...selling quality house plans for over 30 years.

Plan W21567DR: Four-Seasons Cottage



House plans are Copyright © 2009 by our architects and designers.

- Set off by a sturdy stone chimney, stone accents and decorative gables, this striking cottage design could be used as a four-season vacation home.
- Open to each other, the family room and kitchen-dining room offer a wonderful living area. The fireplaced family room rises for two stories, the kitchen-dining room is enlarged by a box bay, and both rooms open to a deck.
- The sheltered main entry opens to a hall with a large coat closet, while the main-level bedroom includes a large walk-in closet.
- Upstairs, a mezzanine overlooks the family room below. Two bedrooms share the second bath.
- Related Plans: Building in reverse? See house plan 21091DR.
- Get a screened gazebo with house plan 2123DR.
- Downsize with cottage plans 21566DR (1,468 sq. ft.) and 21866DR (1,499 sq. ft.).

Style: Canadian, Cottage, European, Metric, Vacation

Total Living Area: 1625

Main Flr.: 1108

2nd Flr.: 517

Total Square Feet: 1,625 sq. ft.

Bedrooms: 3

Full Bathrooms: 2

Width: 36'

Depth: 36'

Maximum Ridge Height: 25'10"

Exterior Walls: 2x6

Ceiling Height:

Main Floor: 9'

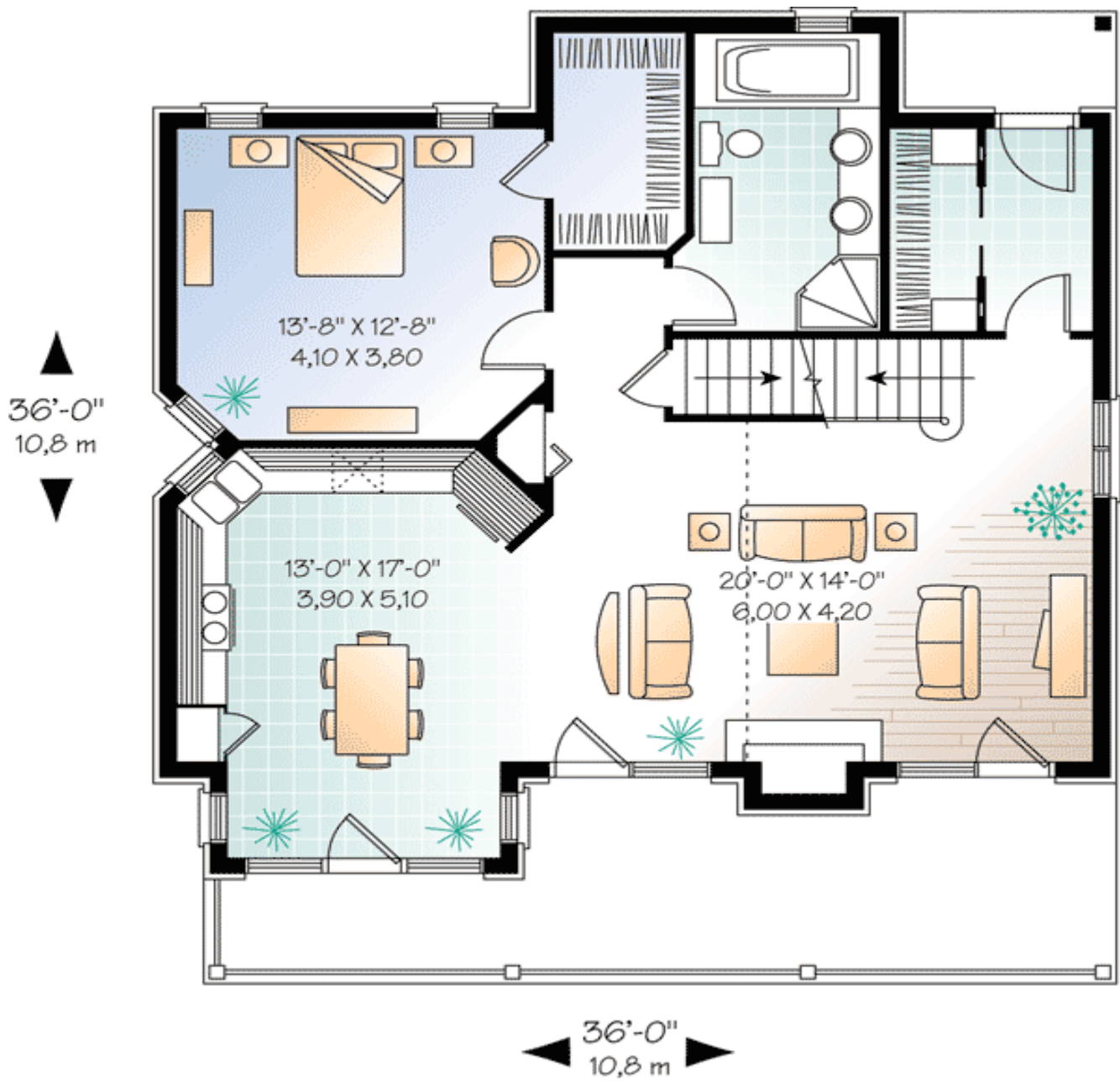
Standard Foundations: Basement

Alternate Foundations: Slab (\$295), Crawl (\$295)

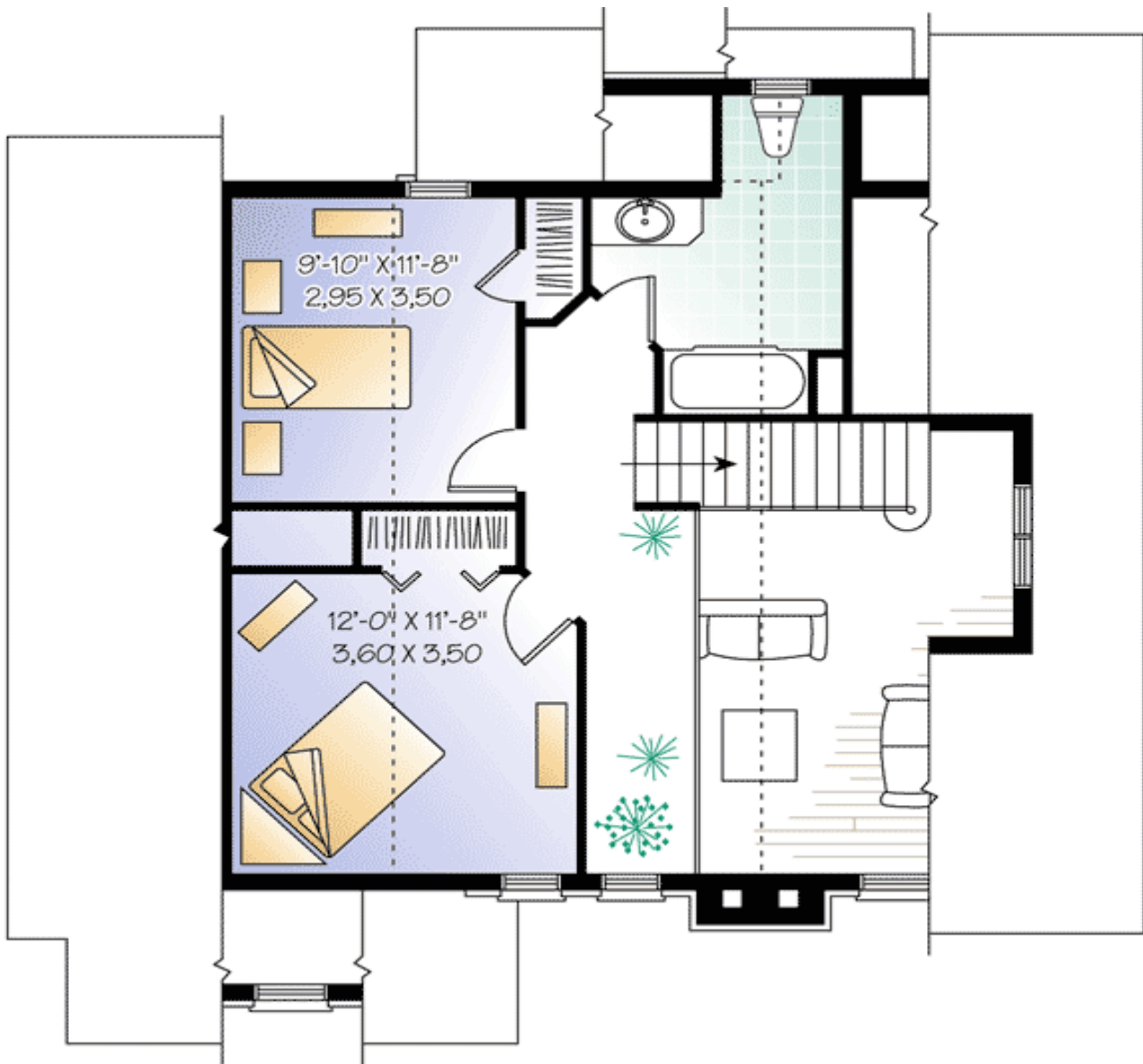
Special Features: 1st Floor Master Suite, Narrow Lot, PDF, CAD Available

One Set	Five Sets	Eight Sets	Reproducible	PDF File	CAD
\$599	\$639	\$669	\$849	\$849	\$1,545

Main Level



2nd Level



Elevation #2

Front elevation

