

Architectural Designs ...selling quality house plans for over 30 years.

Plan W13024FL: Pure Coastal Home Design



House plans are Copyright © 2009 by our architects and designers.

- Introducing a house plan that is a cool, crisp escape from the ordinary, and a stunning example of pure coastal home design.
- Perfect for the work-at-home professional or large family, this house plan offers space for living and working with a number of flexible plan options.
- The grand interior architecture provides sweeping coastal views from three stories, with two full master suites, two additional bedrooms, a formal dining room, and loft office space.

Style: Beach, Florida, Vacation

Total Living Area: 3580

Main Flr.: 1015

2nd Flr.: 1580

3rd Flr.: 871

Tower:

Total Square Feet: 4,200 sq. ft.

Attached Garage: 2 Car, 506 sq. ft.

Bedrooms: 3

Full Bathrooms: 4

Half Bathrooms: 1

Width: 33'9"

Depth: 72'6"

Maximum Ridge Height: 34'11"

Exterior Walls: Block

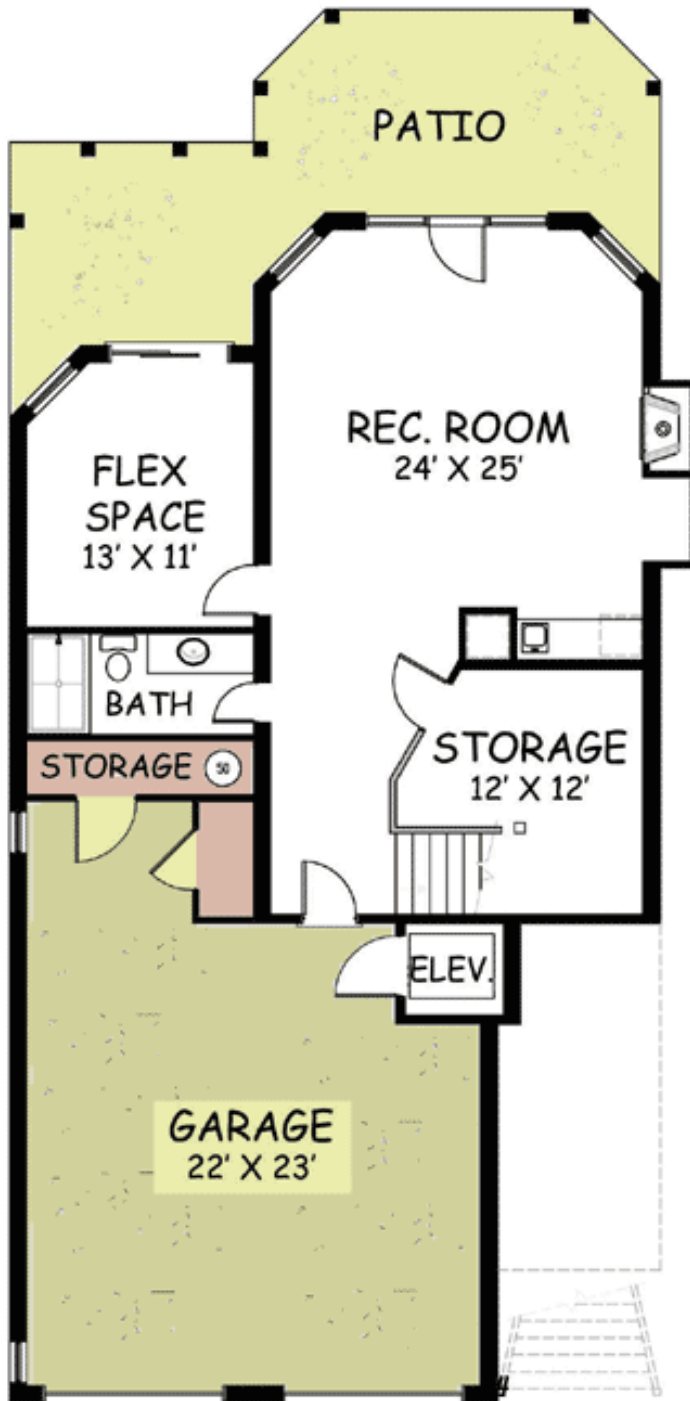
Ceiling Height:

Standard Foundations: Slab

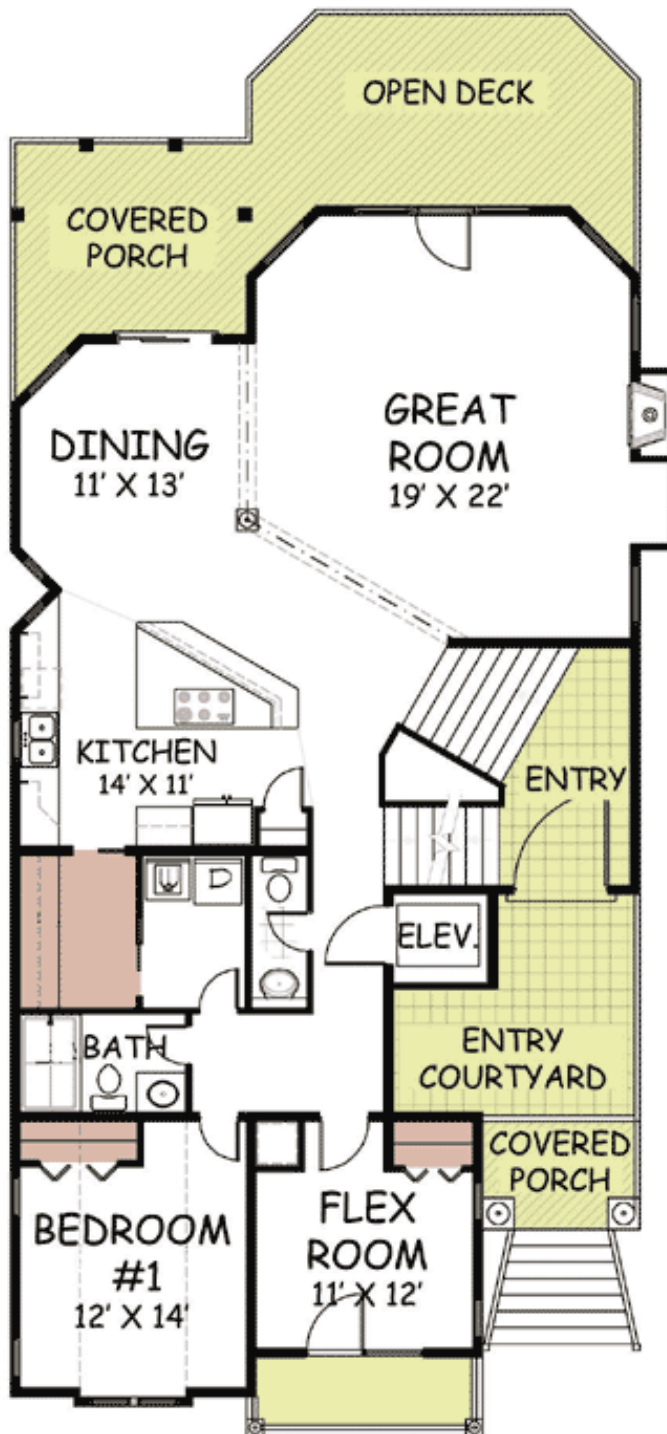
Special Features: CAD Available, Narrow Lot, PDF, Elevator

Reproducible	PDF File	CAD
\$2,710	\$2,710	\$3,710

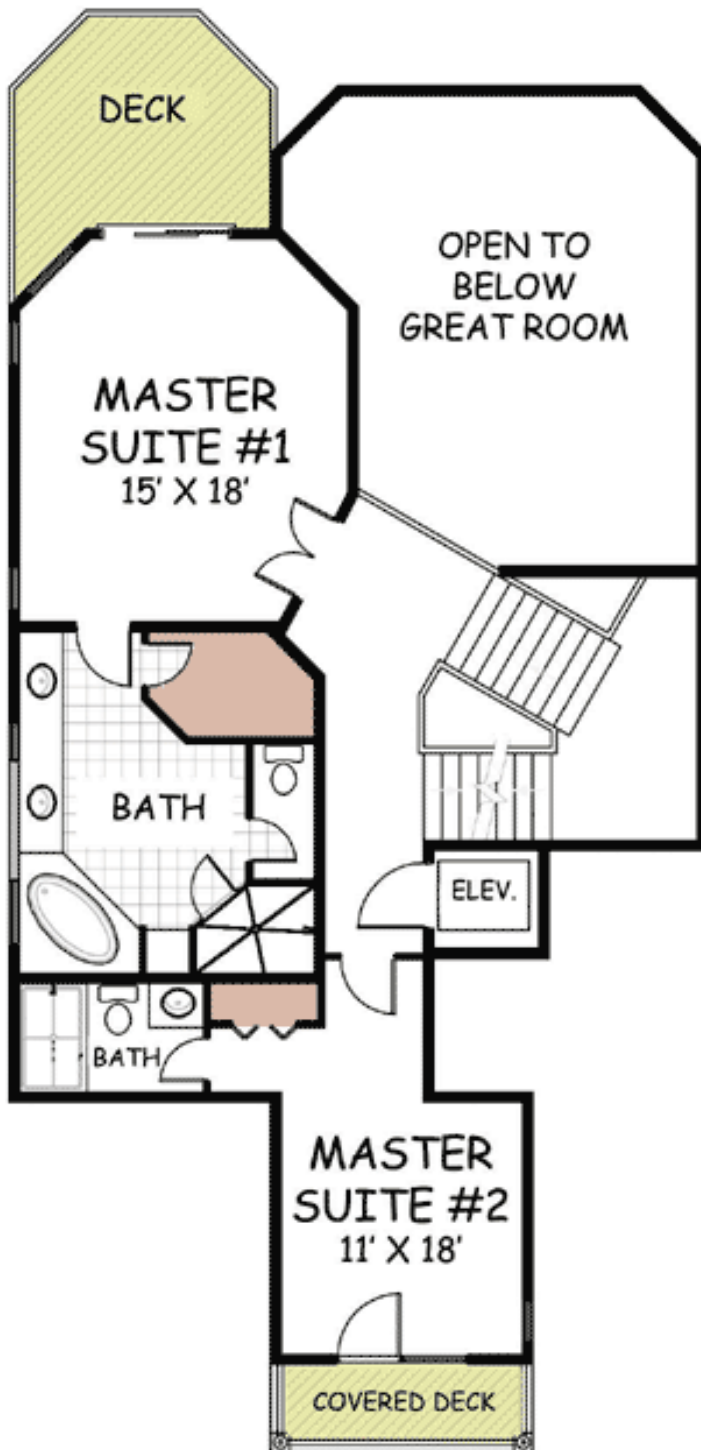
Main Level



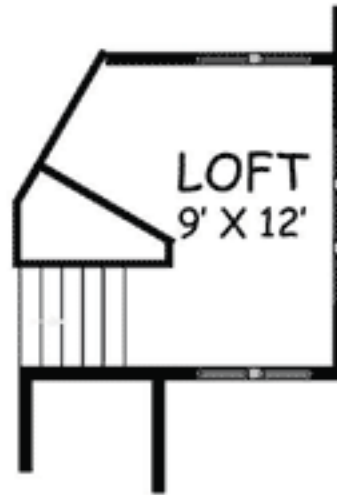
2nd Level



Third Floor



Other



LOFT FLOOR PLAN

Sides/Rear



REAR ELEVATION



LEFT ELEVATION



RIGHT ELEVATION