

# Architectural Designs ...selling quality house plans for over 30 years.

Plan W35047GH



House plans are Copyright © 2009 by our architects and designers.

Style: Craftsman, Metric, Northwest

Total Living Area: 4790

Main Flr.: 2426

Lower Level: 2364

Bonus: 670 sq. ft.

Total Square Feet: 6,405 sq. ft.

Attached Garage: 3 Car, 945 sq. ft.

Bedrooms: 4

Full Bathrooms: 3

Half Bathrooms: 1

Width: 87'6"

Depth: 69'6"

Maximum Ridge Height: 29'9"

Exterior Walls: ICF

Ceiling Height:

Main Floor: 9'

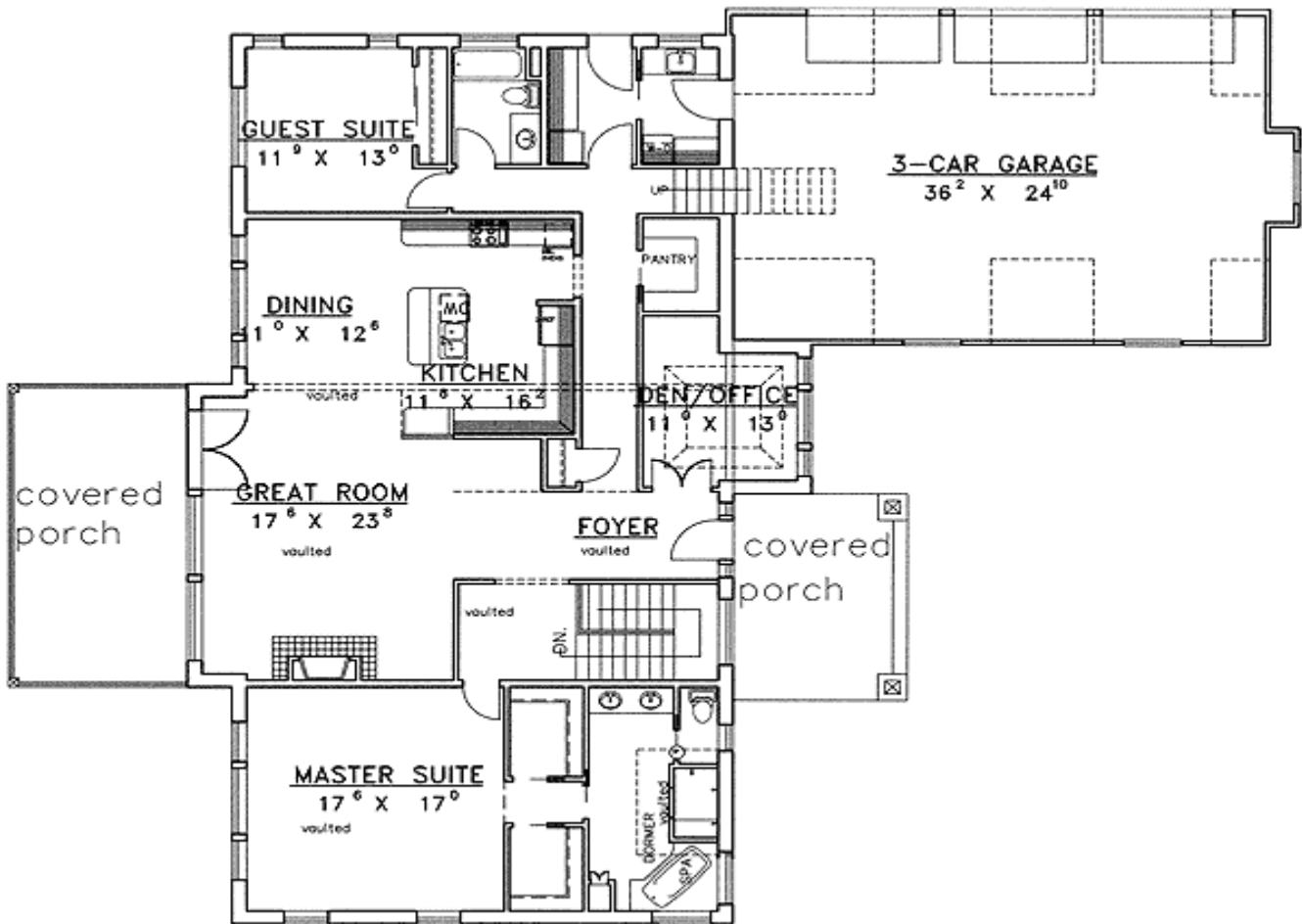
2nd Floor: 9'

Standard Foundations: Daylight

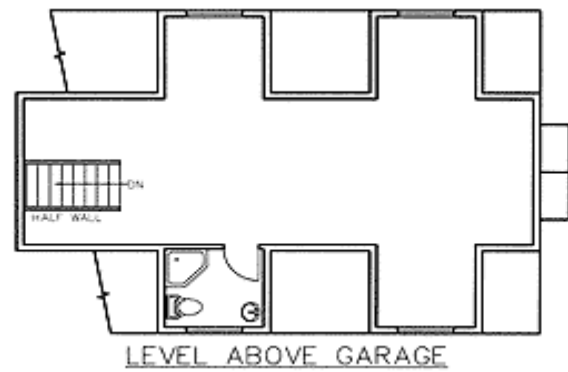
Special Features: PDF, Sloping Lot, CAD Available, Bonus Room, Butler Walk-in Pantry

Five Sets	Eight Sets	Reproducible	PDF File	CAD
\$825	\$930	\$850	\$950	\$950

## Main Level



## 2nd Level



## Lower Level

