

Architectural Designs ...selling quality house plans for over 30 years.

Plan W52070TH: Clean Lines, Timeless Style



House plans are Copyright © 2009 by our architects and designers.

- Clean roof lines, bay windows and an inviting porch give this home an timeless style. Stone columns and fa'ade are blend with lap siding on the lower level and board and batten siding on the upper level.
- Walk up the steps and into the open floor plan with combined living and dining rooms. A galley kitchen, with an eating bar and walk-in pantry, has convenient access to the attached garage via the utility room.
- The main level master bedroom has a private bath with separate tub and shower and enclosed toilet room. Up the stairs are three additional bedrooms that open up to a central common room. A spacious second bath with linen closet, sits next to a large bonus room that would be perfect for crafts or a home office.

Style: Craftsman, Prairie Style

Total Living Area: 2215

Main Flr.: 1254

2nd Flr.: 1172

Total Square Feet: 2,963 sq. ft.

Attached Garage: 2 Car, 537 sq. ft.

Bedrooms: 4

Full Bathrooms: 2

Width: 54'

Depth: 48'

Maximum Ridge Height: 24'7

Exterior Walls: 2x6

Ceiling Height:

Main Floor: 8'

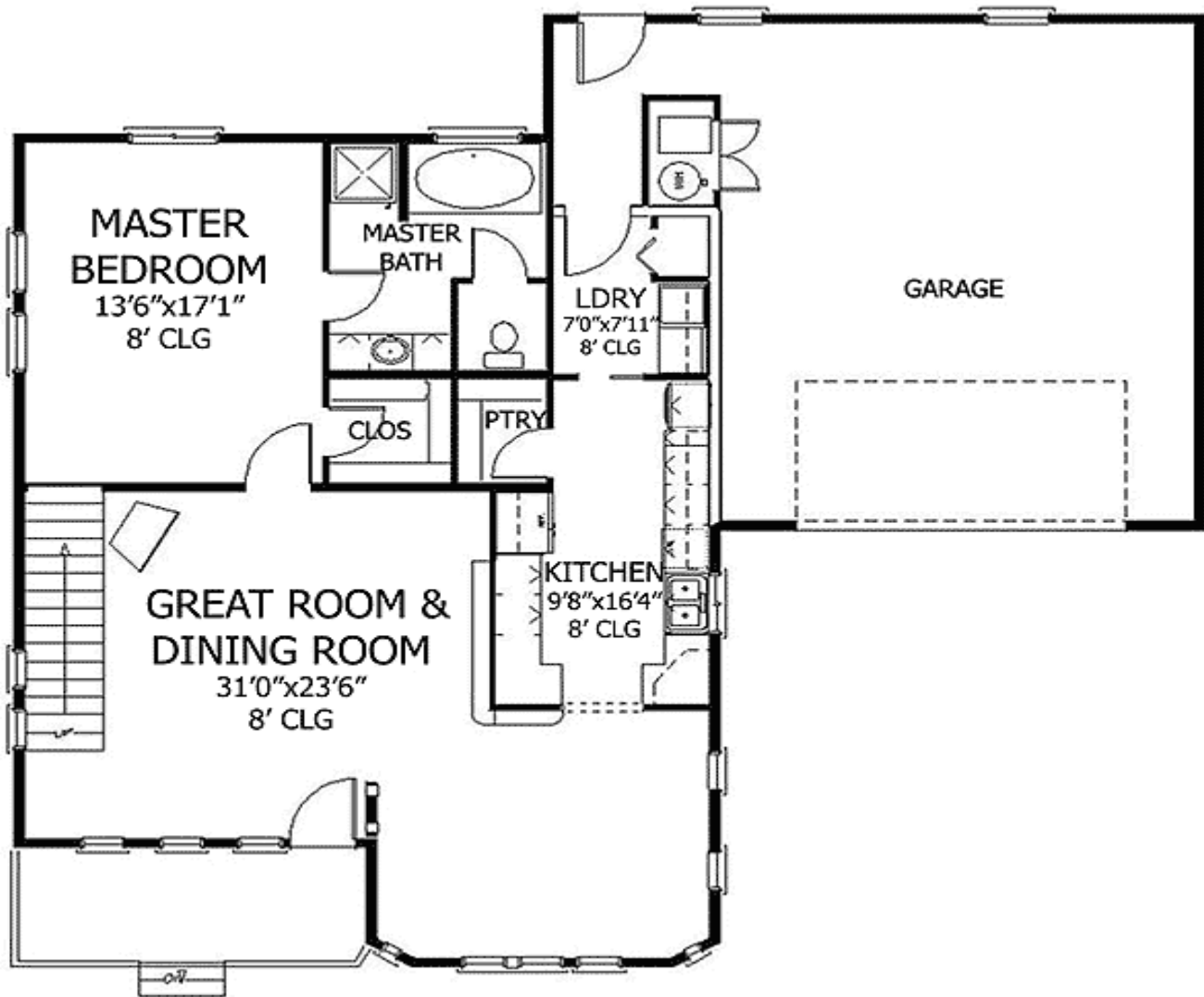
2nd Floor: 8'

Standard Foundations: Crawl

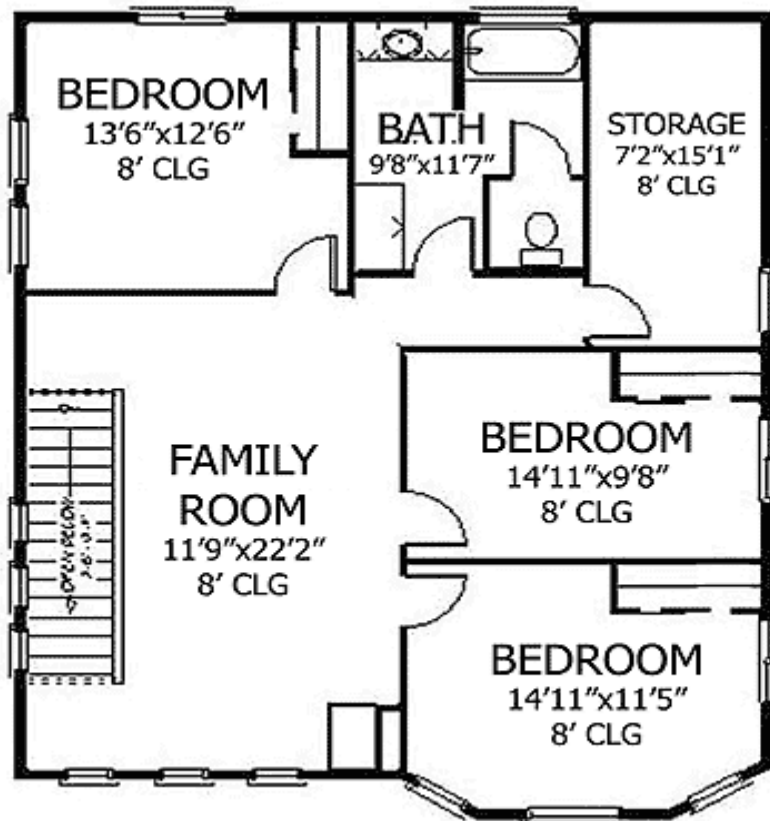
Special Features: 1st Floor Master Suite, CAD Available, PDF

One Set	Five Sets	Eight Sets	Reproducible	PDF File	CAD
\$500	\$600	\$675	\$775	\$775	\$1,075

Main Level



2nd Level



Rear View



Great Room



Kitchen

