

# Architectural Designs ...selling quality house plans for over 30 years.

Plan W21575DR: Comfortable Country Home Plan



House plans are Copyright © 2009 by our architects and designers.

- With porches wrapping around three sides of this country home plan, your family will have plenty of outdoor living space to enjoy.
- An airlock entry saves heat in the winter and ushers you into an open living/dining area complete with fireplace and access to the porch.
- Nearby, a large eat-in kitchen offers plenty of counter space and another door to the porch. A private study or media room is set off the foyer.
- The master suite is a true retreat with a romantic fireplace, walk-in closet and huge master bath big enough for a claw foot tub.
- Two additional bedrooms, one of which shares access to a second floor deck with the master, a loft and a hall bath complete the upstairs.
- Related Plans: Need this house plan in reverse? See 2147DR.
- Need less space? See house plans 2118DR (garage on right) and 21558DR (garage on left).
- Get an elevator with house plan 21885DR.
- Need more space? See house plan 21123DR (3-car garage, stone exterior, 2,992 s.f.).

Style: Canadian, Country, Farmhouse, Metric

Total Living Area: 2687

Main Flr.: 1297

2nd Flr.: 1390

Bonus: 229 sq. ft.

Total Square Feet: 3,388 sq. ft.

Attached Garage: 2 Car, 472 sq. ft.

Bedrooms: 3

Full Bathrooms: 2

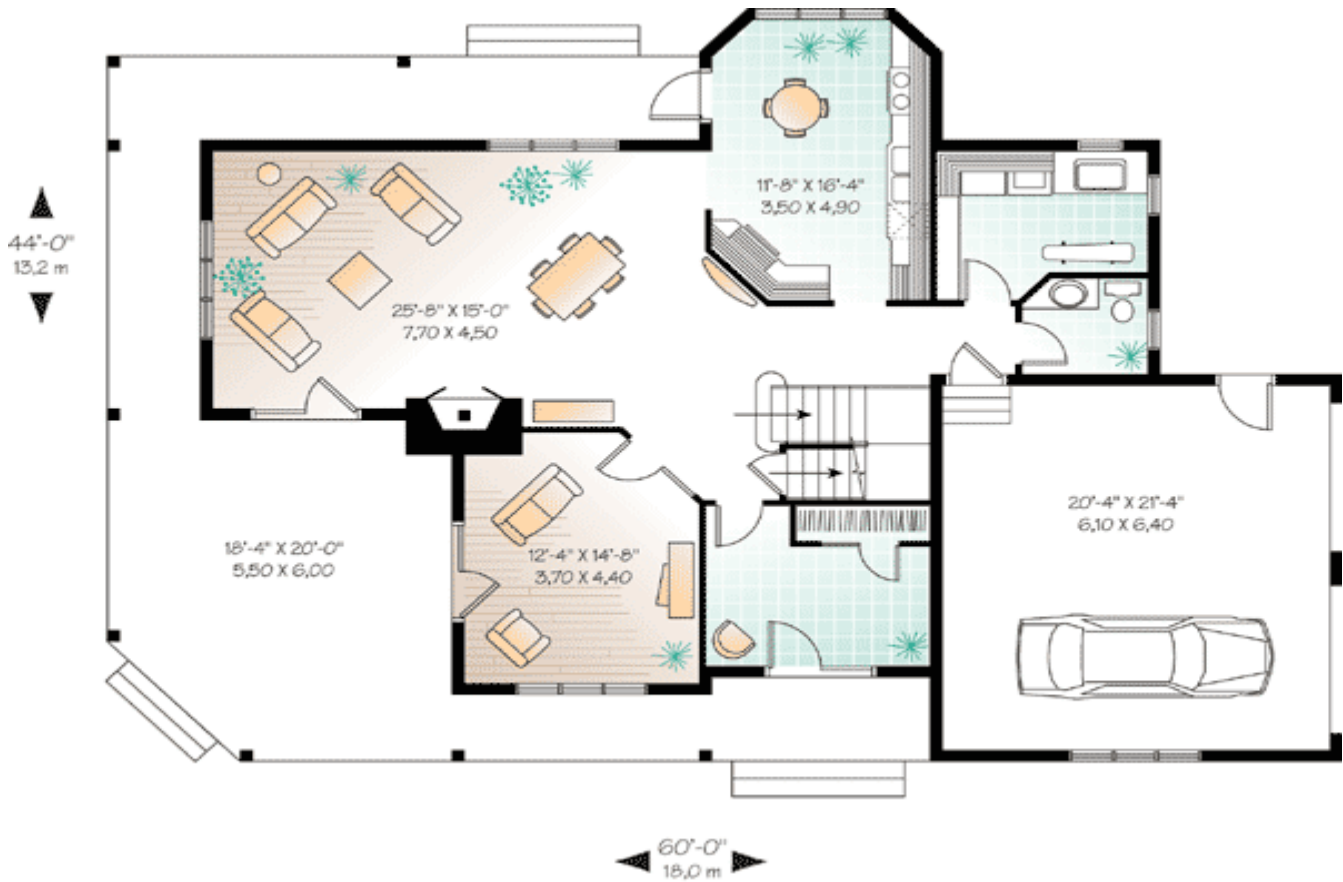
Half Bathrooms: 1

Width: 60'

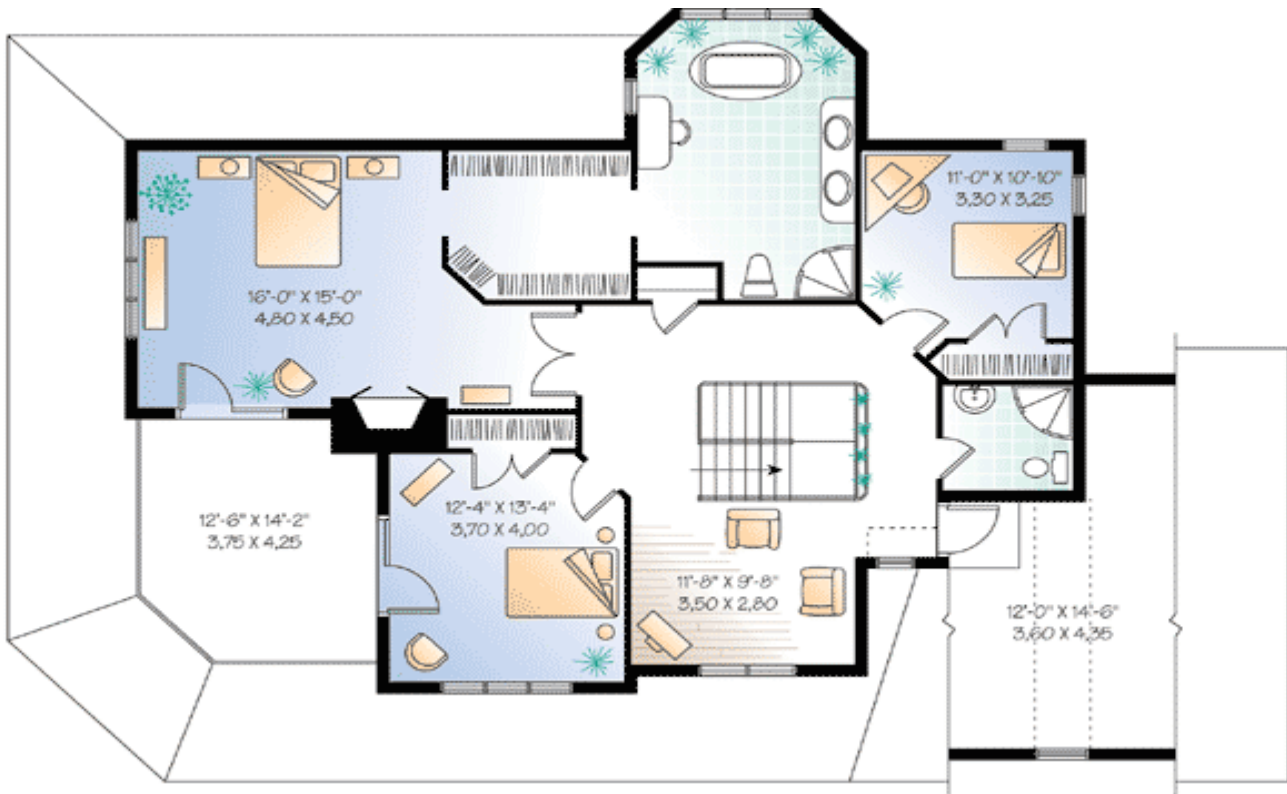
Depth: 44'  
Maximum Ridge Height: 33'8"  
Exterior Walls: 2x6  
Ceiling Height:  
Main Floor: 9'  
Standard Foundations: Basement  
Alternate Foundations: Slab (\$295), Crawl (\$295)  
Special Features: Bonus Room, PDF, CAD Available

One Set	Five Sets	Eight Sets	Reproducible	PDF File	CAD
\$749	\$789	\$819	\$999	\$999	\$1,710

## Main Level



## 2nd Level



Rear View



## Interior

