

Architectural Designs ...selling quality house plans for over 30 years.

Plan W21179DR: Vacation Retreat



House plans are Copyright © 2009 by our architects and designers.

- This vacation home plan has plenty of room to accommodate family and guests. The rear has plenty of windows to bring in light and maximize views.
- On the main level, the large kitchen with an island blends into the living/dining room. A private master suite with walk-in closet is also located on this level.
- Two bedrooms with a bath and balcony loft overlooking the living space below occupy the second floor.
- Related Plan: Want a finished lower level? See house plan 21181DR and gain 1,247 sq. ft. of additional living space comprised of two more bedrooms, a large bath and recreation room and a laundry room.

Style: Canadian, Cottage, Country, Metric, Vacation

Total Living Area: 1909

Main Flr.: 1254

2nd Flr.: 655

Basement Unfinished: 1,254 sq. ft.

Entry: 32 sq. ft.

Total Square Feet: 3,611 sq. ft.

Attached Garage: 2 Car, 416 sq. ft.

Bedrooms: 3

Full Bathrooms: 2

Half Bathrooms: 1

Width: 54'

Depth: 38'

Maximum Ridge Height: 26'8"

Exterior Walls: 2x6

Ceiling Height:

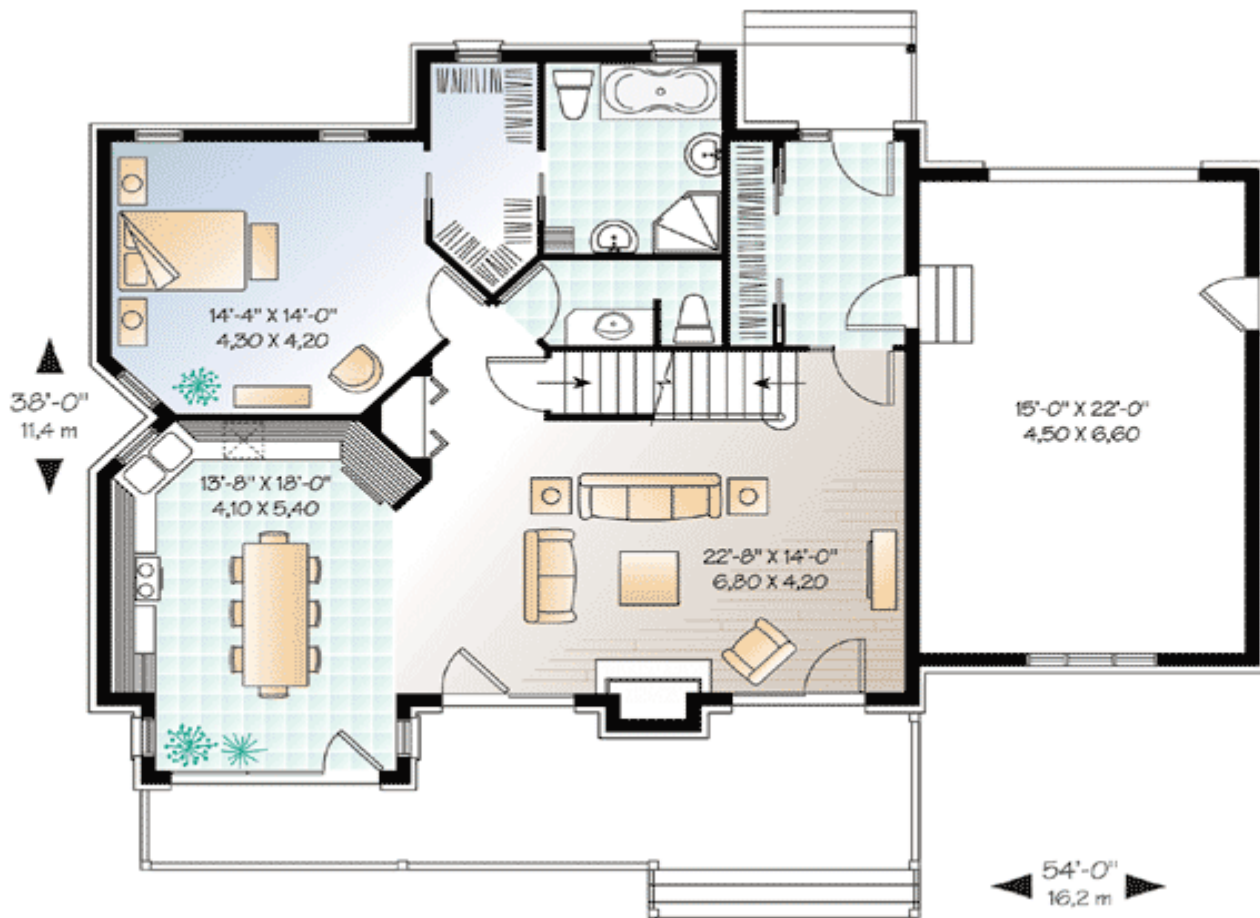
Standard Foundations: Basement

Alternate Foundations: Slab (no charge), Crawl (no charge)

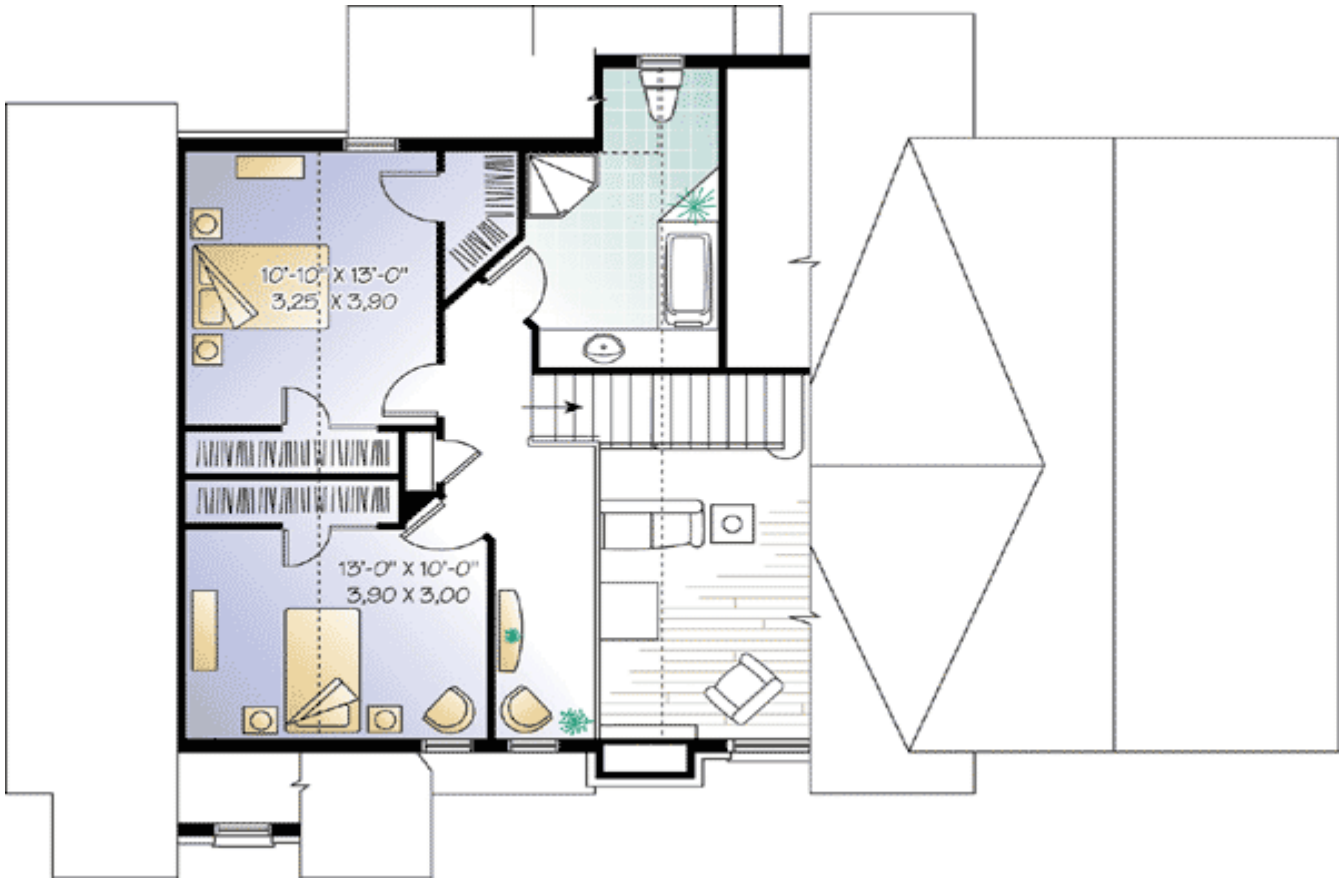
Special Features: CAD Available, PDF

One Set	Five Sets	Eight Sets	Reproducible	PDF File	CAD
\$810	\$850	\$900	\$990	\$990	\$1,980

Main Level

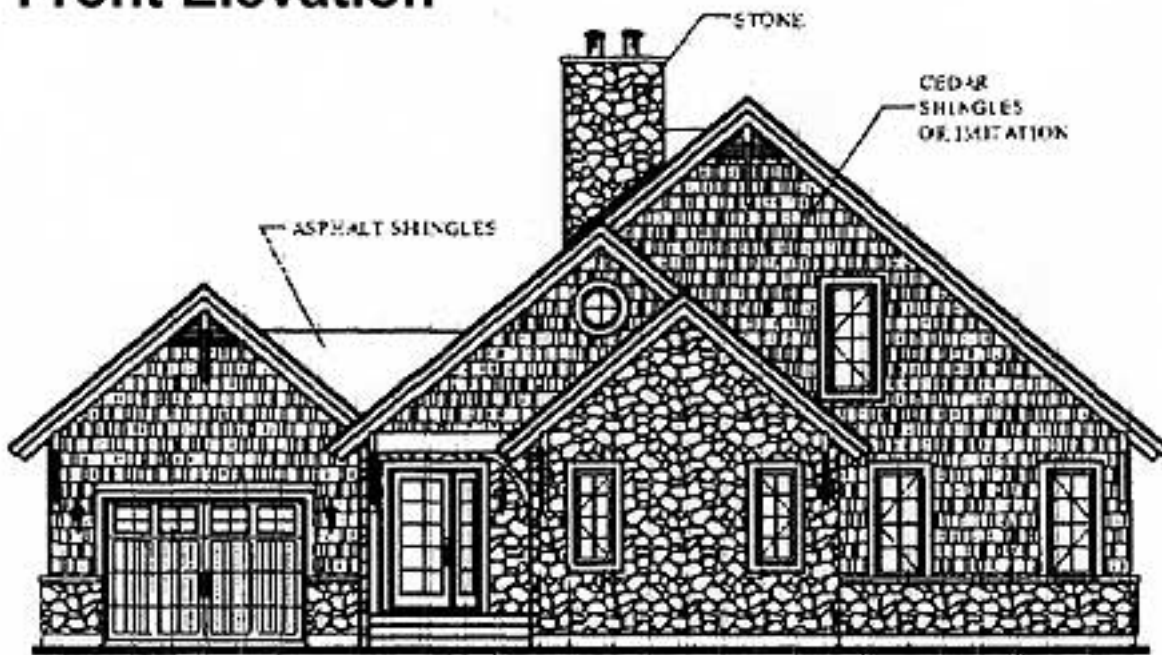


2nd Level

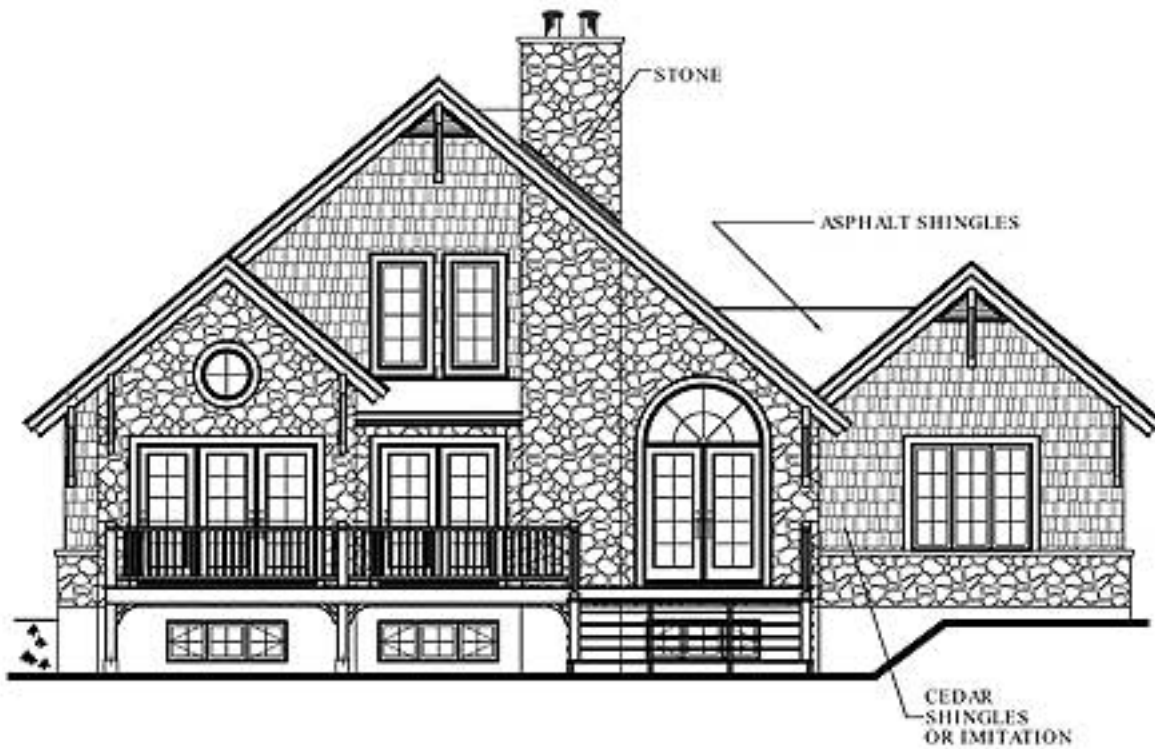


Elevation #2

Front Elevation



Rear View



Interior

