

Architectural Designs ...selling quality house plans for over 30 years.

Plan W5572BR: Beach House Plan With Observation Room



House plans are Copyright © 2009 by our architects and designers.

- The elevated foundation of this terrific beach house plan allows for a three-vehicle carport at ground level. Running the width of the house, a covered porch is ideal for outdoor lounging.
- On the main level, the living room soars upward for two stories and flows into the dining room with its handy pantry closet.
- An angled eating counter separates the kitchen from the living and dining rooms.
- Walk-in closets serve both the master bedroom and the upstairs bedroom. The second full bath, attic storage and an observation room are also upstairs.
- In the observation room, you can take in the view or perhaps curl up with a book.

Style: Beach, Vacation

Total Living Area: 1110

Main Flr.: 832

2nd Flr.: 278

Front Porch: 256 sq. ft.

Porch, Combined: 256 sq. ft.

Carport & Storage:

Total Square Feet: 1,344 sq. ft.

Bedrooms: 2

Full Bathrooms: 2

Width: 32'

Depth: 34'

Maximum Ridge Height: 34'

Exterior Walls: 2x4

Ceiling Height:

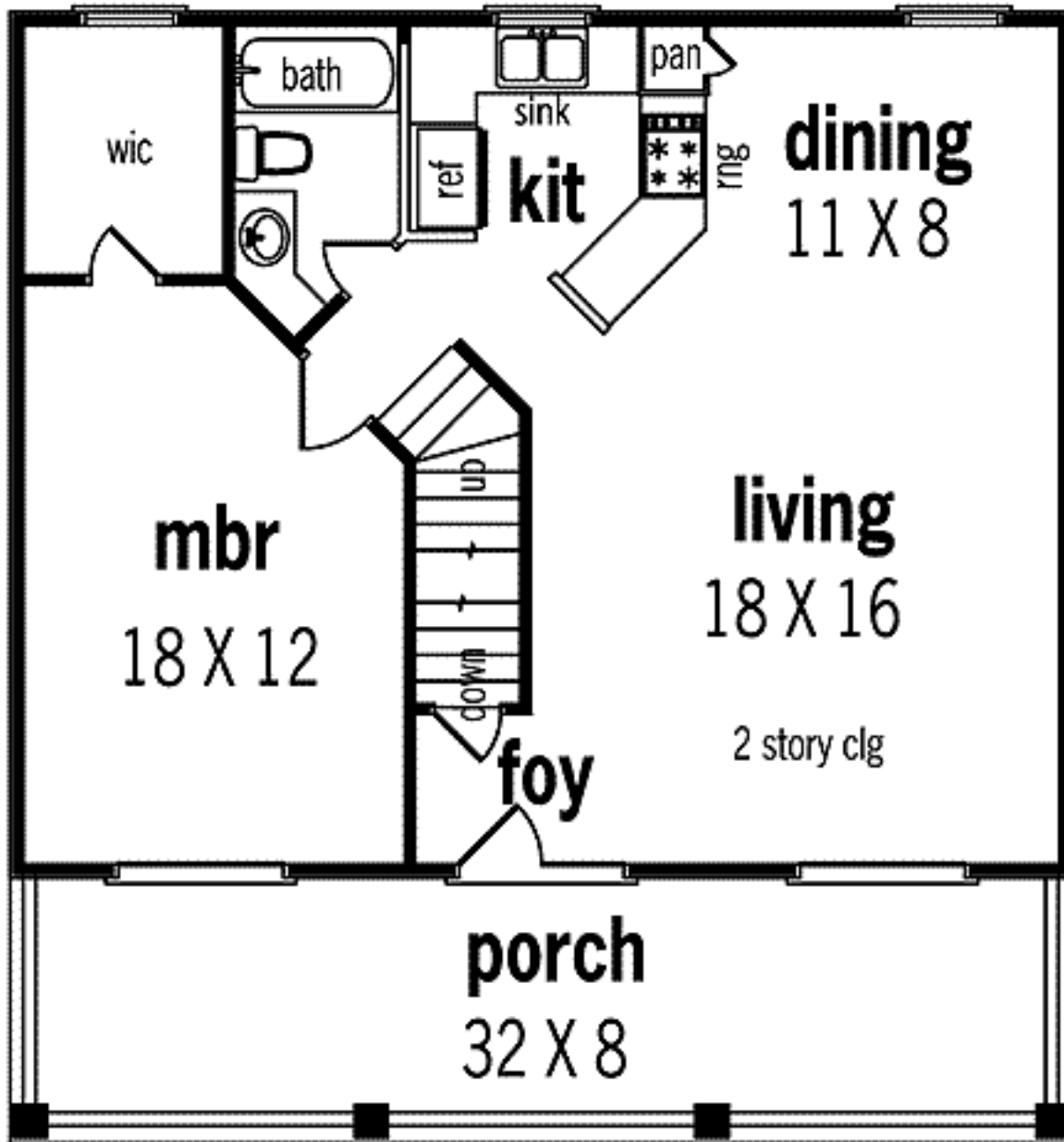
Main Floor: 8'

Standard Foundations: Piling

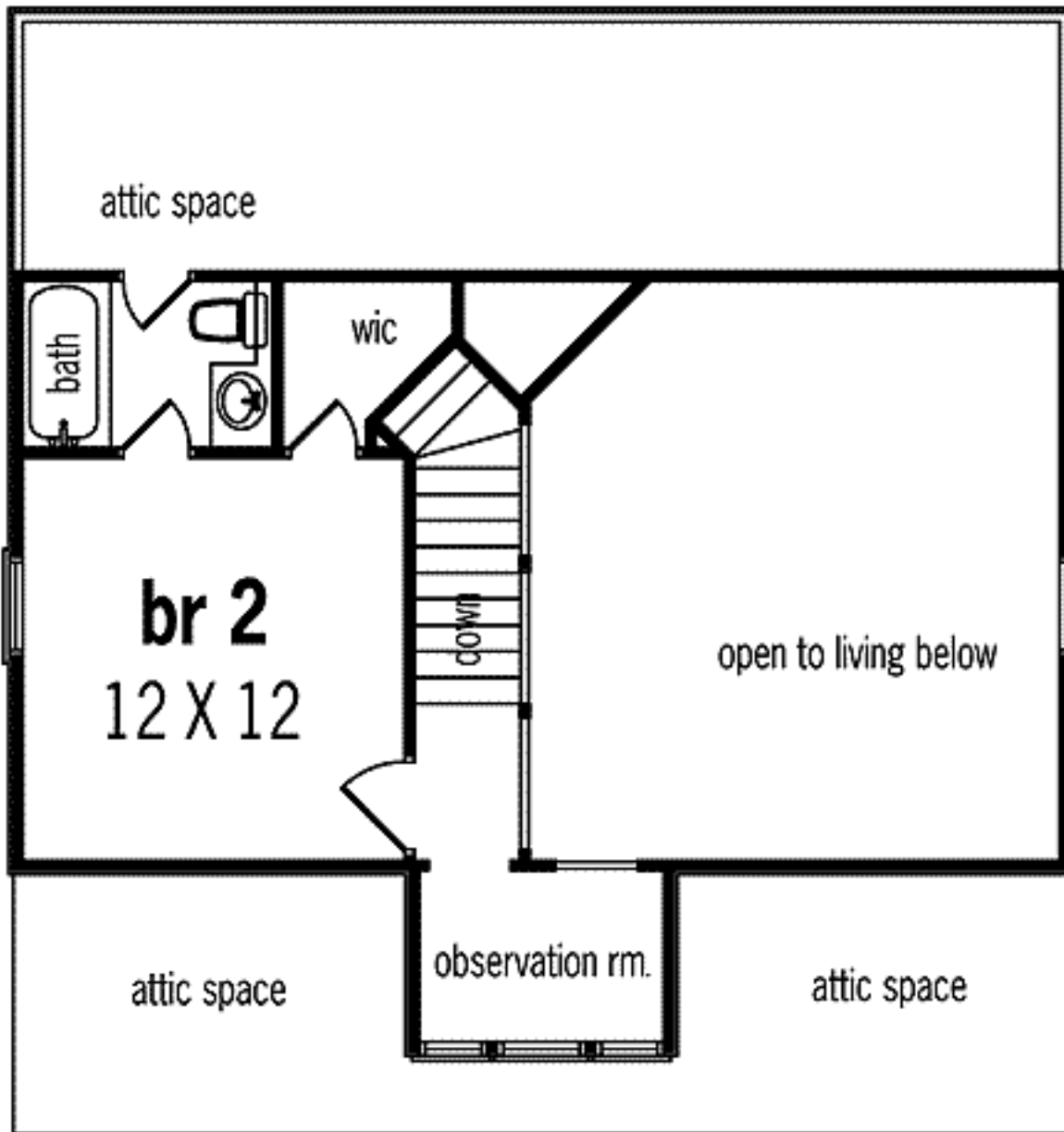
Special Features: 1st Floor Master Suite, PDF, Narrow Lot

One Set	Five Sets	Eight Sets	Reproducible	PDF File	CAD
\$489	\$554	\$594	\$694	\$694	\$1,388

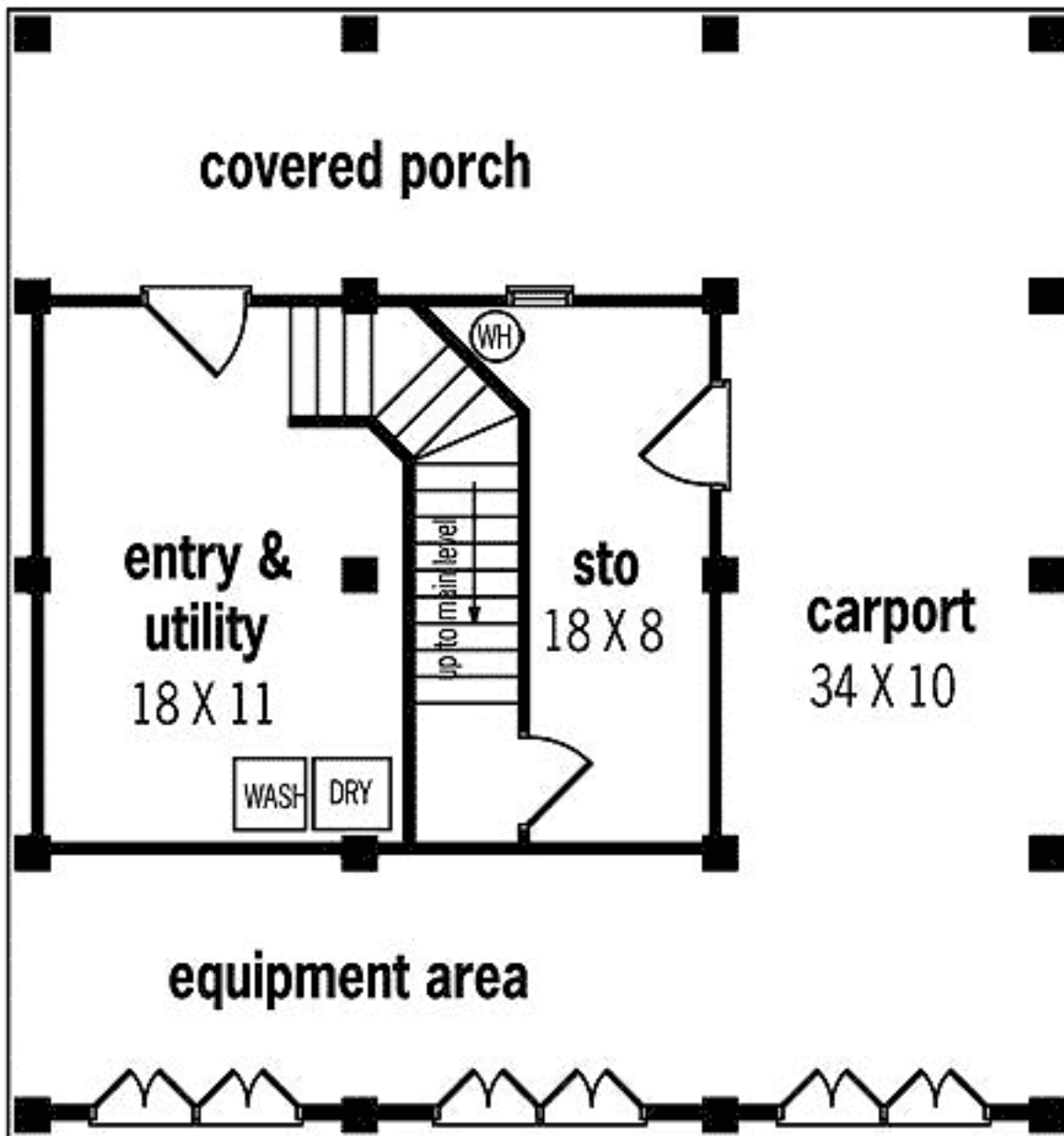
Main Level



2nd Level



Lower Level



Sides/Rear



REAR ELEVATION



FRONT ELEVATION



Left



Right