

# Architectural Designs ...selling quality house plans for over 30 years.

Plan W18547WB



House plans are Copyright © 2009 by our architects and designers.

Style: Craftsman, Prairie Style

Total Living Area: 5282

Main Flr.: 2303

2nd Flr.: 1209

Lower Level: 1770

Basement Unfinished: 541 sq. ft.

Front Porch: 27 sq. ft.

Rear Porch: 165 sq. ft.

Total Square Feet: 6,771 sq. ft.

Attached Garage: 3 Car, 756 sq. ft.

Bedrooms: 5

Full Bathrooms: 4

Half Bathrooms: 1

Width: 62'

Depth: 77'

Maximum Ridge Height: 25'10"

Ceiling Height:

Main Floor: 9'

2nd Floor: 8'

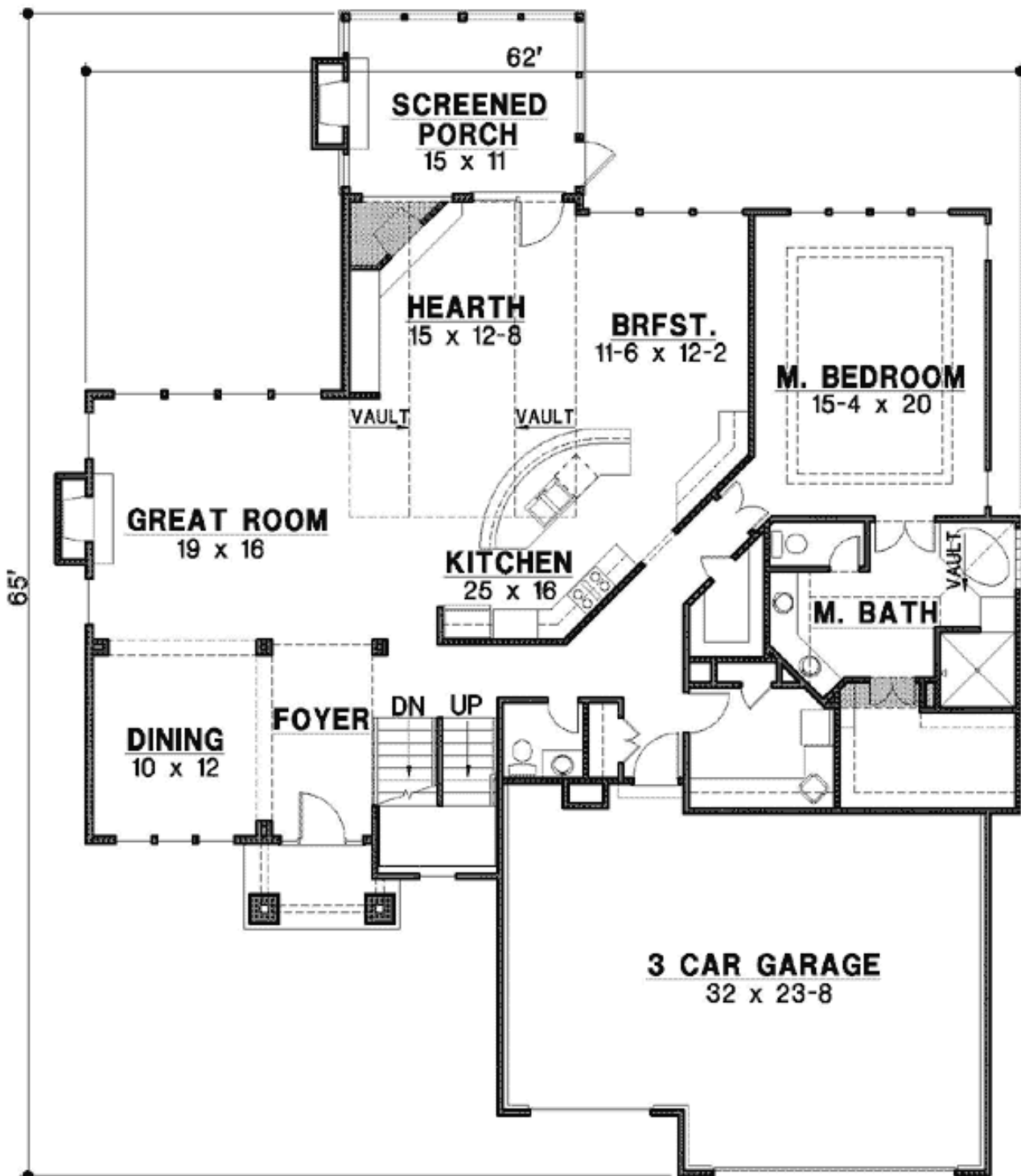
Other: 11' Foyer, Great Room; Dining Room & Screen Porch; 13' Hearth Room; 10' MBR & Garage; 8' Rec Room

Standard Foundations: Daylight

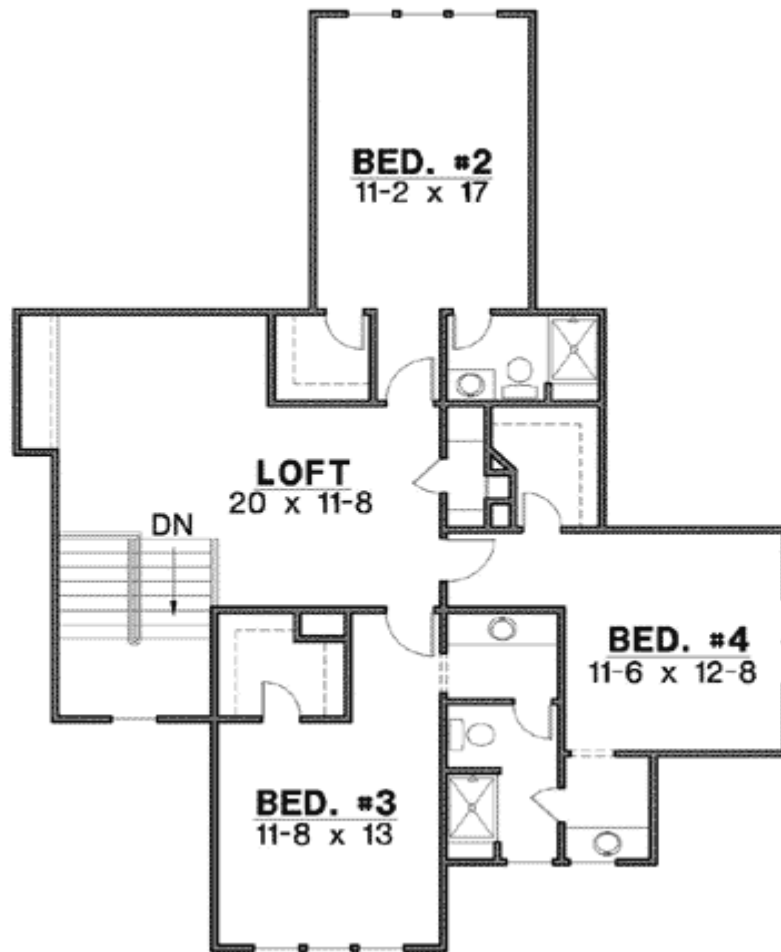
Special Features: 1st Floor Master Suite, PDF, CAD Available, Sloping Lot

One Set	Five Sets	Eight Sets	Reproducible	PDF File	CAD
\$1,295	\$1,395	\$1,495	\$1,695	\$1,695	\$2,695

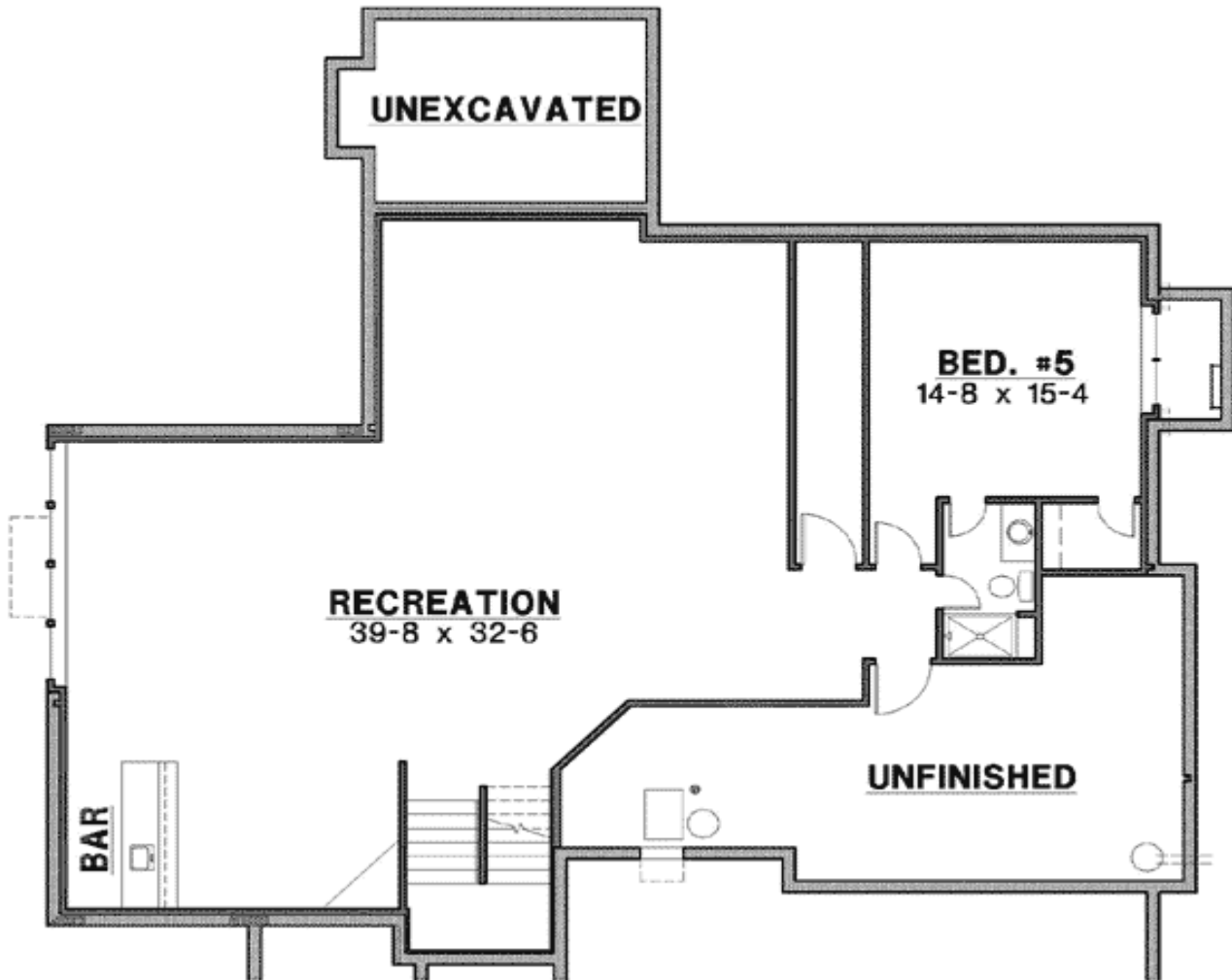
## Main Level



2nd Level



Lower Level



Rear View

