

Architectural Designs ...selling quality house plans for over 30 years.

Plan W7050H: More for Less



House plans are Copyright © 2009 by our architects and designers.

- Big in function but small in footage, this two-story passive solar design puts every inch of space to valuable and efficient use. The house can be constructed as a free-standing unit or as part of a condominium development.
- The plan flows visually from its entry, through its high-ceilinged great room, to a brilliant south-facing sun room where solar heat is collected and stored in the ceramic tiled floor.
- Thick insulation of exterior walls and ceilings minimize heat loss during the cold season. In summer, air flow is created by convection while eave overhangs protect against over-exposure.
- Foundation: optional basement of 915 sq. ft.

Style: Contemporary

Total Living Area: 1312

Main Flr.: 915

2nd Flr.: 397

Basement Unfinished: 915 sq. ft.

Deck: 100 sq. ft.

Total Square Feet: 2,754 sq. ft.

Attached Garage: 2 Car, 427 sq. ft.

Bedrooms: 3

Full Bathrooms: 2

Width: 43'6"

Depth: 45'4"

Maximum Ridge Height: 21'

Exterior Walls: 2x4

Ceiling Height:

Standard Foundations: Basement

Special Features: Narrow Lot, 1st Floor Master Suite

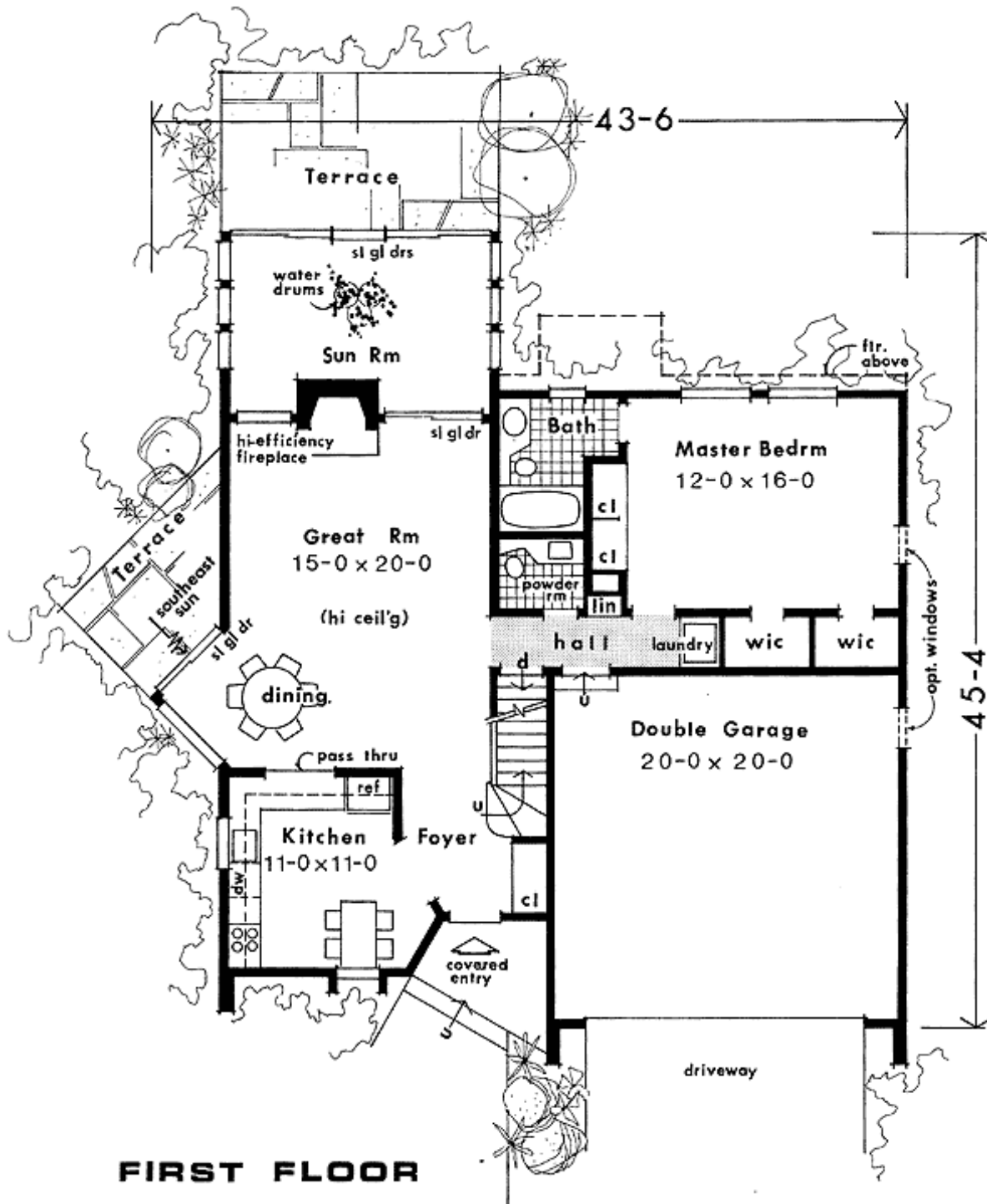
One Set
\$395

Five Sets
\$460

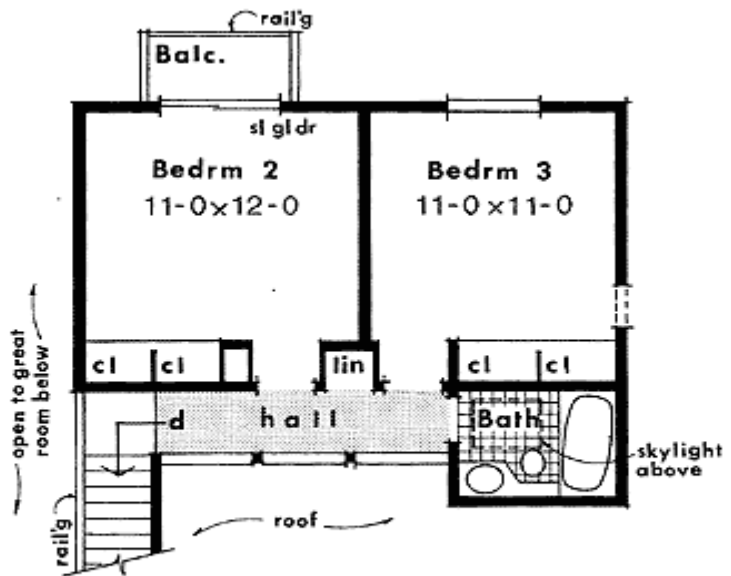
Eight Sets
\$505

Reproducible
\$605

Main Level

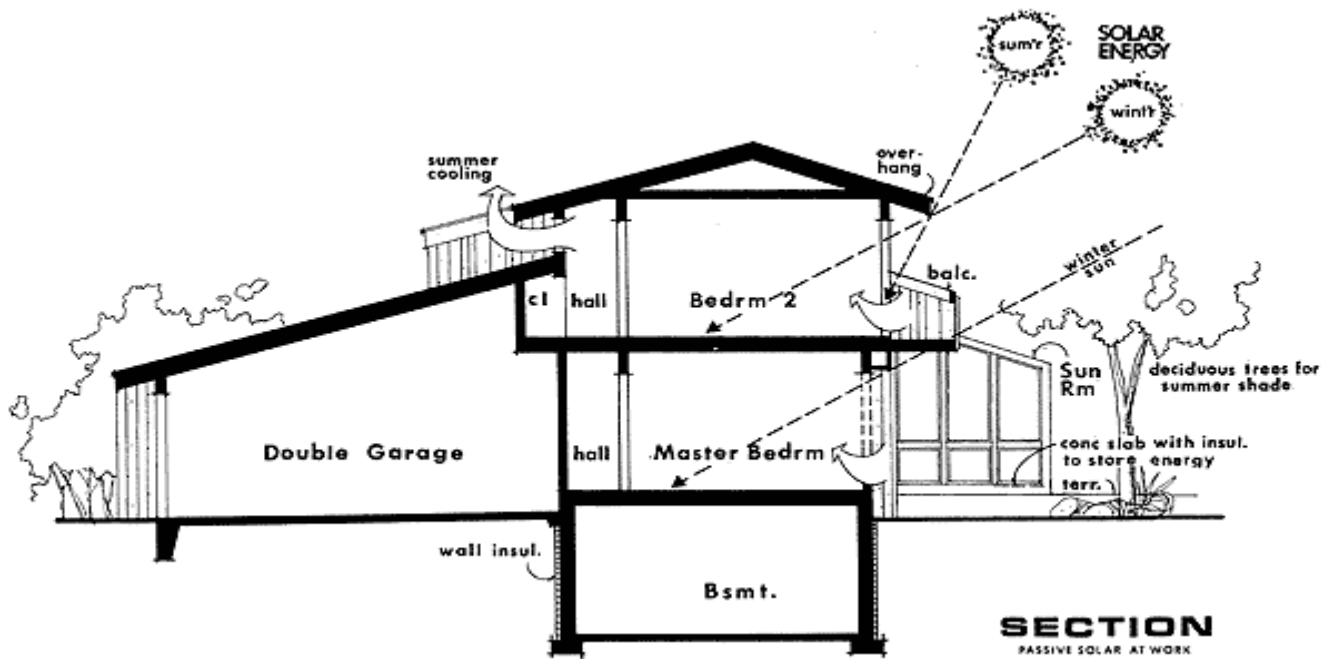


2nd Level



SECOND FLOOR

Other



Rear View

