

Plan W51044MM: Functional Family-Friendly Plan



House plans are Copyright © 2009 by our architects and designers.

- This home plan offers a very functional split floorplan layout. The great room features 10-foot ceilings and cozy fireplace with gas logs.
- You have great views of the great room and back yard from the kitchen. A raised bar adds an informal seating option.
- The expansive and well-appointed master suite includes a large walk-in closet, an oversized jet tub, separate shower, compartmentalized toilet and dual vanities.
- A large 2-car garage with separate storage is provided and the optional bonus room is an excellent space for a playroom and even has room for an extra bath.
- Related Plans: Need more space? See house plans 51056MM (2,401 s.f.) and 51050MM (2,851 s.f.).
- For an alternate exterior and a reverse layout, see house plan 5109MM.

Style: Southern

Total Living Area: 1600

Main Flr.: 1600

Bonus: 408 sq. ft.

Front Porch: 32 sq. ft.

Rear Porch: 52 sq. ft.

Total Square Feet: 2,803 sq. ft.

Attached Garage: 2 Car, 711 sq. ft.

Bedrooms: 3

Full Bathrooms: 2

Width: 70'8"

Depth: 47'10"

Maximum Ridge Height: 23'8"

Exterior Walls: 2x4

Ceiling Height:

Main Floor: 9'

Standard Foundations: Slab, Crawl

Special Features: CAD Available, PDF, Bonus Room, Split Bedrooms

One Set
\$585

Five Sets
\$645

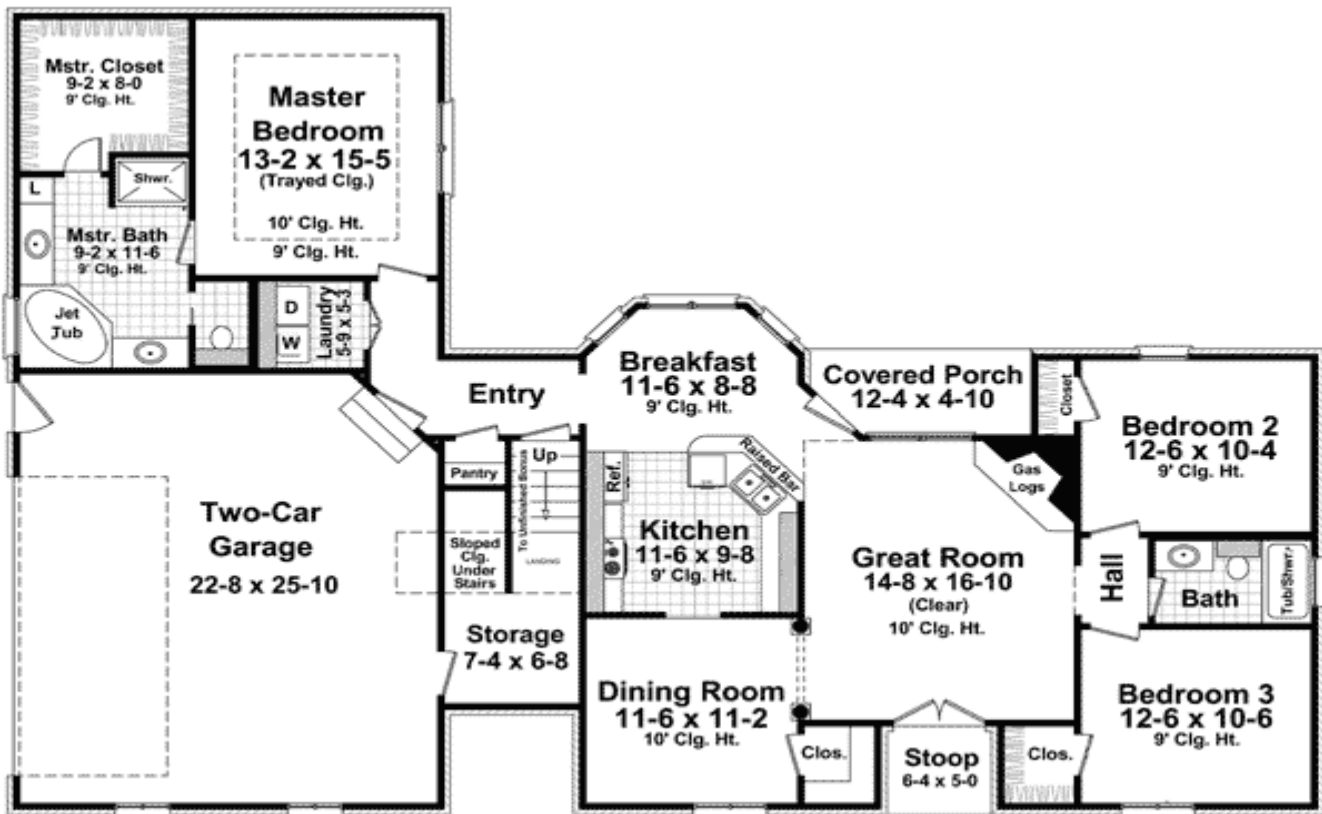
Eight Sets
\$780

Reproducible
\$805

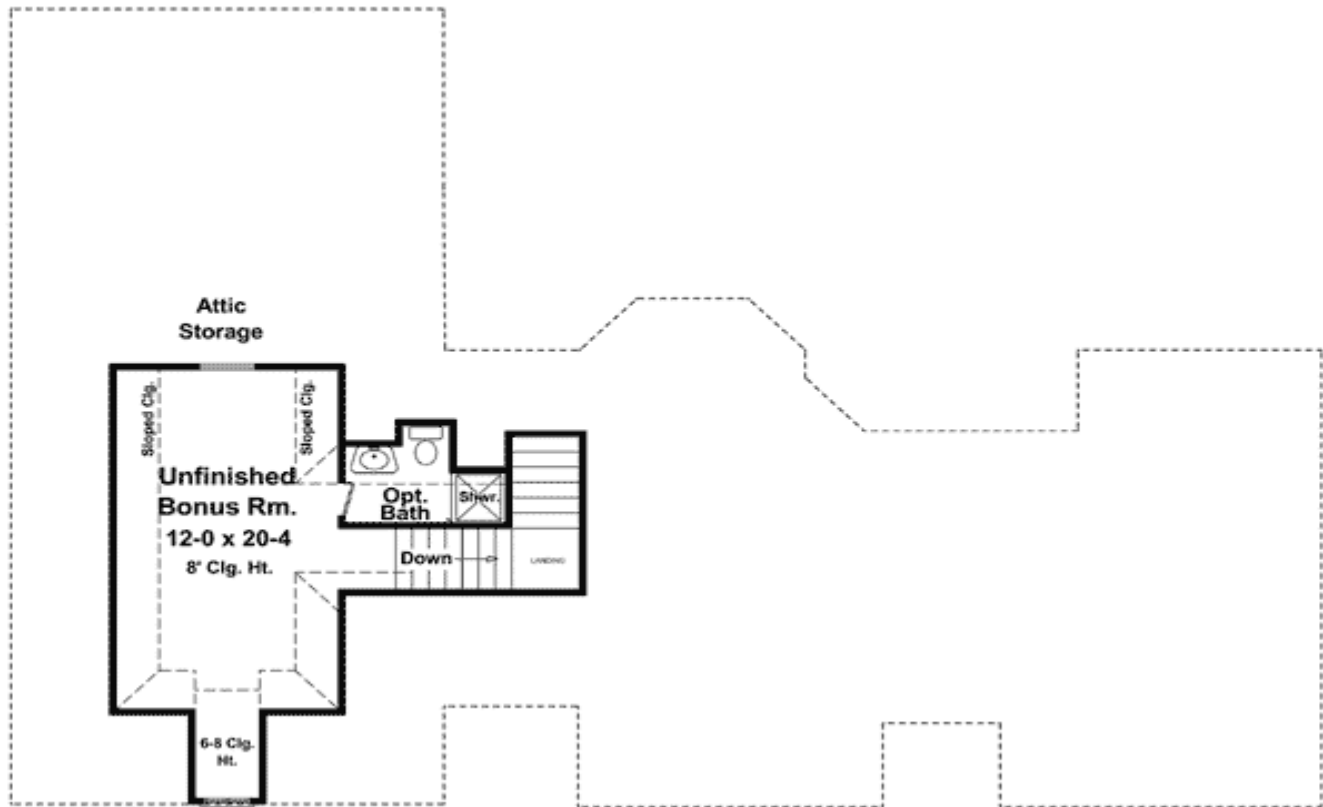
PDF File
\$805

CAD
\$1,305

Main Level



Bonus



Rear View



Interior Vw2



Bonus Room