

Plan W57214HA: Ultimate Guy's Retreat



House plans are Copyright © 2009 by our architects and designers.

- This unassuming garage disguises the ultimate guy's retreat.
- Upstairs, the rear wall is designed to hold your home theater (up to 10' wide). A corner bar with kitchen and a full bath mean you don't have to go far for any creature comforts.
- A fireplace and a tray ceiling are nice touches.
- On the ground level, the garage features two 10'x7' overhead doors. The shop with bench and an office add more uses to this unique structure.
- Related Plan: For a rear-entry garage, see 57215HA.

Style: Carriage, Garage

Total Living Area: 1170

Main Flr.: 210

2nd Flr.: 969

Total Square Feet: 1,895 sq. ft.

Attached Garage: 2 Car, 716 sq. ft.

Bedrooms: None

Full Bathrooms: 1

Width: 34'

Depth: 32'

Maximum Ridge Height: 25'6

Ceiling Height:

Main Floor: 8'

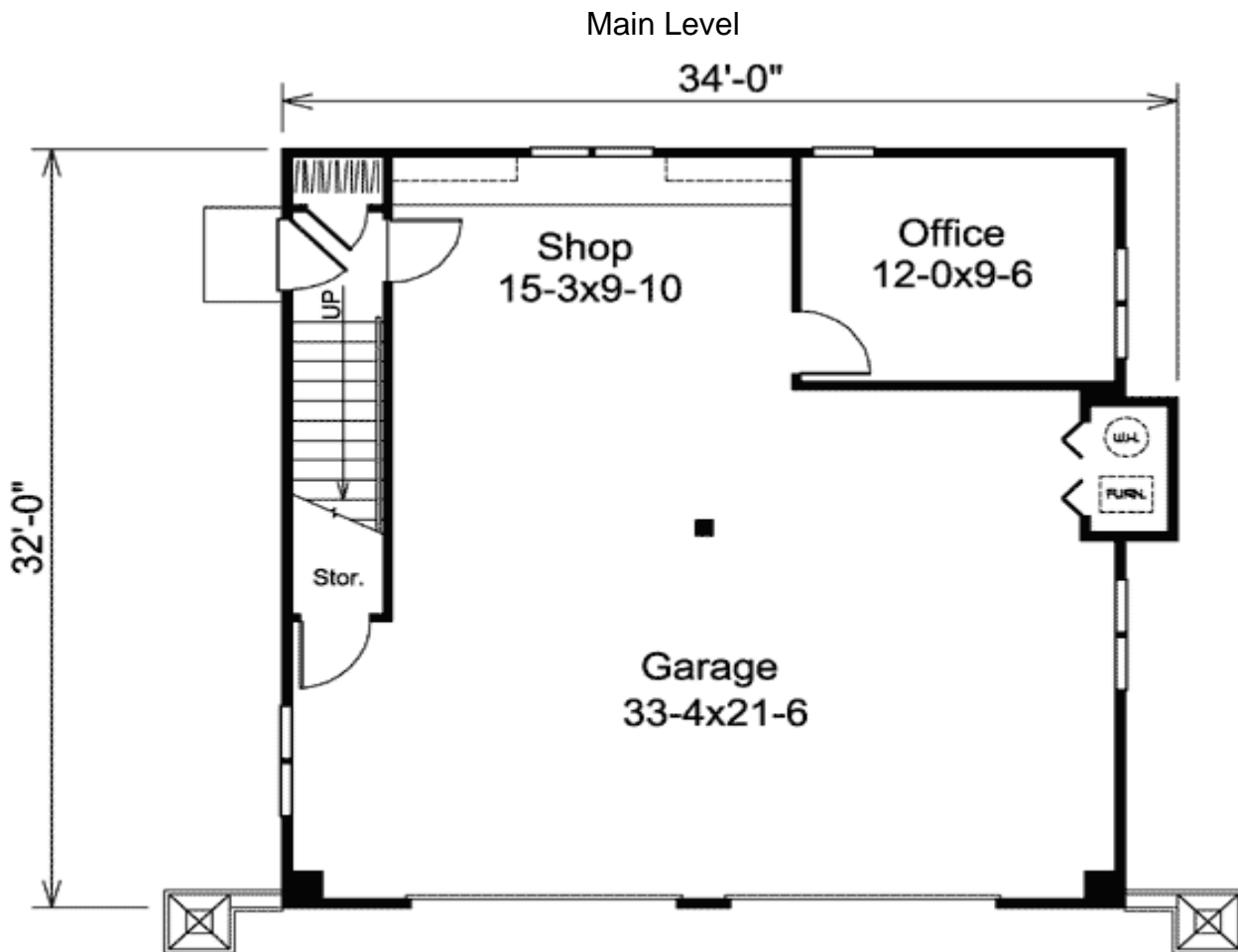
2nd Floor: 8'

Other: Tray Game Room

Standard Foundations: Slab

Special Features: CAD Available, PDF, Narrow Lot, Media-Game-Home Theater, Drive Under Garage, Den-Office-Library-Study

One Set	Five Sets	Eight Sets	Reproducible	PDF File	CAD
\$310	\$410	\$510	\$595	\$595	\$995



2nd Level



Interior

