

Architectural Designs ...selling quality house plans for over 30 years.

Plan W3800JA: Beautifully Updated Victorian



House plans are Copyright © 2009 by our architects and designers.

- A turreted two-story bay, plus an ornately detailed curved porch, are among the Victorian features on the exterior of this exciting home plan.
- Round-top transom windows and a plant ledge make the wide, two-story foyer special. From there, you view the spectacular curved living room with its 13-foot-high ceiling and built-in wet bar. A bay window brightens the adjacent dining room.
- The informal living quarters comprise a sunken, seven-sided family room with a corner fireplace, a breakfast room and a roomy L-shaped kitchen with an angled cooktop island.
- Upstairs, a tray-ceilinged sitting area spotlights the master suite, which also includes a walk-in closet and a five-fixture bath with its own linen closet. Another full bath is placed between bedrooms two and three.
- Foundation options: basement, slab or crawl space.
- Related Plans: Need less space? See this one-story related house plan:3867JA
- Want a master-up design? See house plan 3809JA.

Style: Country, Victorian

Total Living Area: 2455

Main Flr.: 1499

2nd Flr.: 956

Basement Unfinished: 1,499 sq. ft.

Deck: 260 sq. ft.

Total Square Feet: 4,683 sq. ft.

Attached Garage: 2 Car, 469 sq. ft.

Bedrooms: 3

Full Bathrooms: 3

Width: 69'2"

Depth: 46'

Maximum Ridge Height: 29'

Exterior Walls: 2x4

Ceiling Height:

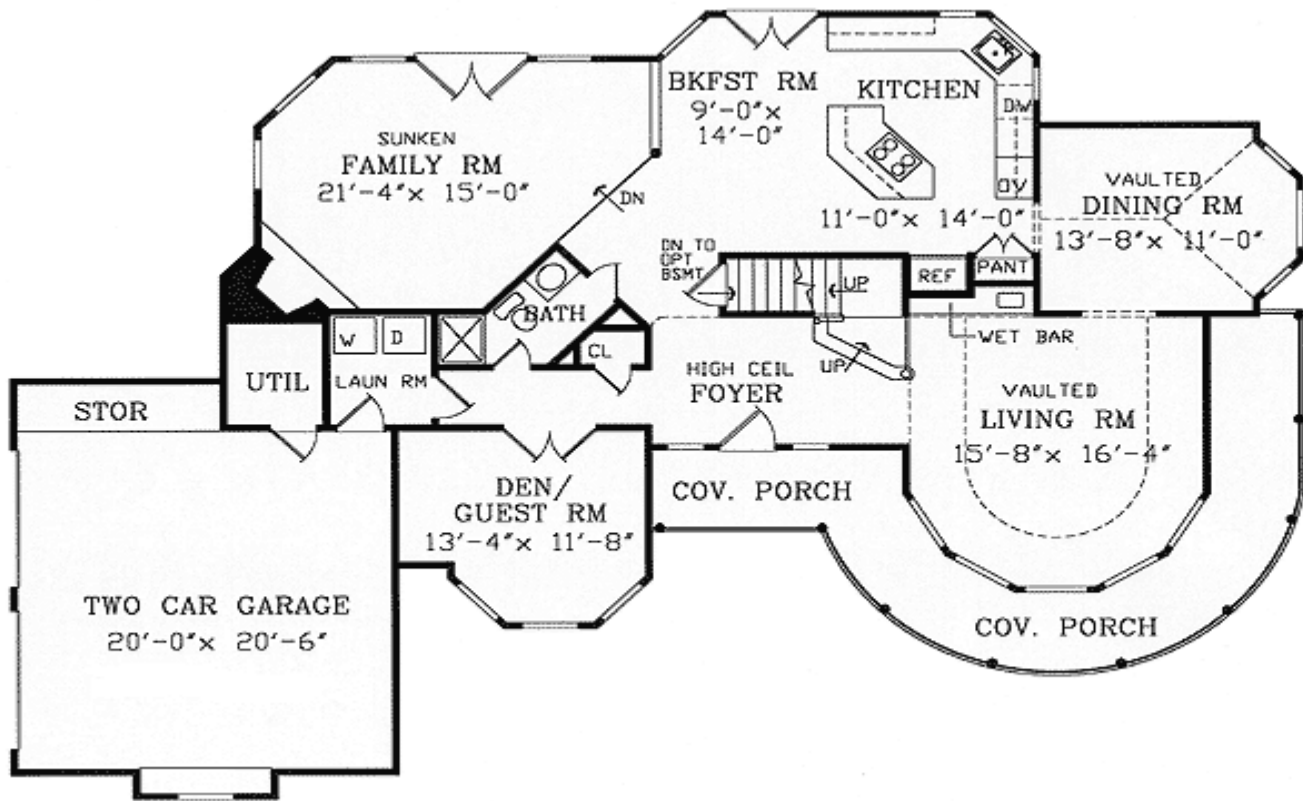
Other: Vaulted Living & Dining Rooms; 2-Story Foyer

Standard Foundations: Slab, Basement, Crawl

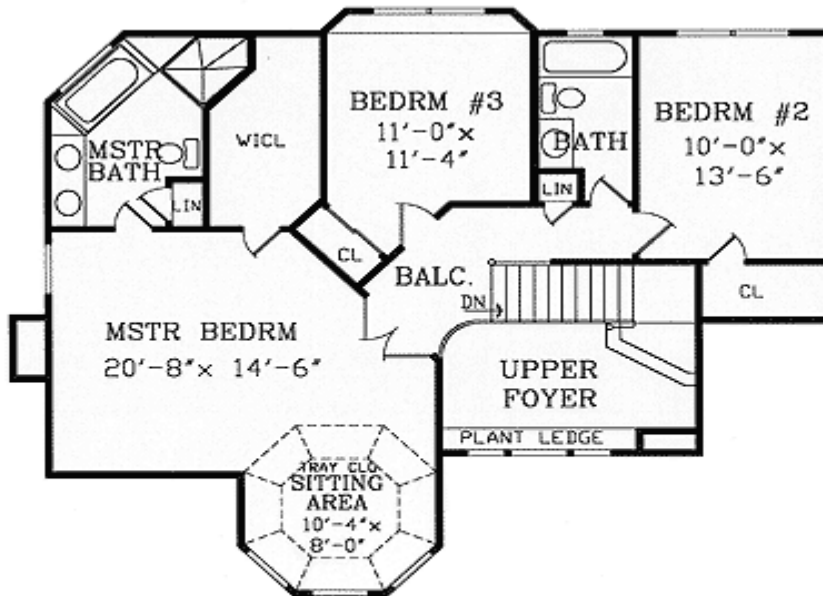
Special Features: MBR Sitting Area, PDF, CAD Available, Photo Gallery, Den-Office-Library-Study

Five Sets	Eight Sets	Reproducible	PDF File	CAD
\$665	\$705	\$840	\$840	\$1,340

Main Level



2nd Level



Architectural Designs ...selling quality house plans for over 30 years.

Photo



Architectural Designs :: 57 Danbury Road :: Wilton, CT 06897
USA & Canada 1-800-854-7852 or 1-877-229-2447 :: International 262-521-4596
Fax 1-203-761-8600 :: Email: info@architecturaldesigns.com

Rear View



Living Room



Dining Room



Kitchen



Master BR

