

# Architectural Designs ...selling quality house plans for over 30 years.

Plan W81340W: Country Farmhouse with Contemporary Appeal



House plans are Copyright © 2009 by our architects and designers.

- Here's a great country farmhouse with a lot of contemporary appeal. The generous use of windows adds exciting visual elements to the exterior as well as plenty of natural light to the interior.
- With exterior walls framed in 2x6, you can get a rustic look if you use log siding as shown.
- An impressive tiled entry opens to a two-story great room with a raised hearth.
- The kitchen conveniently combines with this area and offers a snack counter in addition to a casual dining nook.
- The family bedrooms are on the main level; an expansive master suite with an adjacent study creates a resplendent retreat upstairs, complete with a private balcony.

Style: Country, Farmhouse, Log

Total Living Area: 1669

Main Flr.: 1093

2nd Flr.: 576

Porch, Combined: 1,312 sq. ft.

Total Square Feet: 2,981 sq. ft.

Bedrooms: 3

Full Bathrooms: 2

Width: 52'

Depth: 46'

Maximum Ridge Height: 25'

Exterior Walls: 2x6

Ceiling Height:

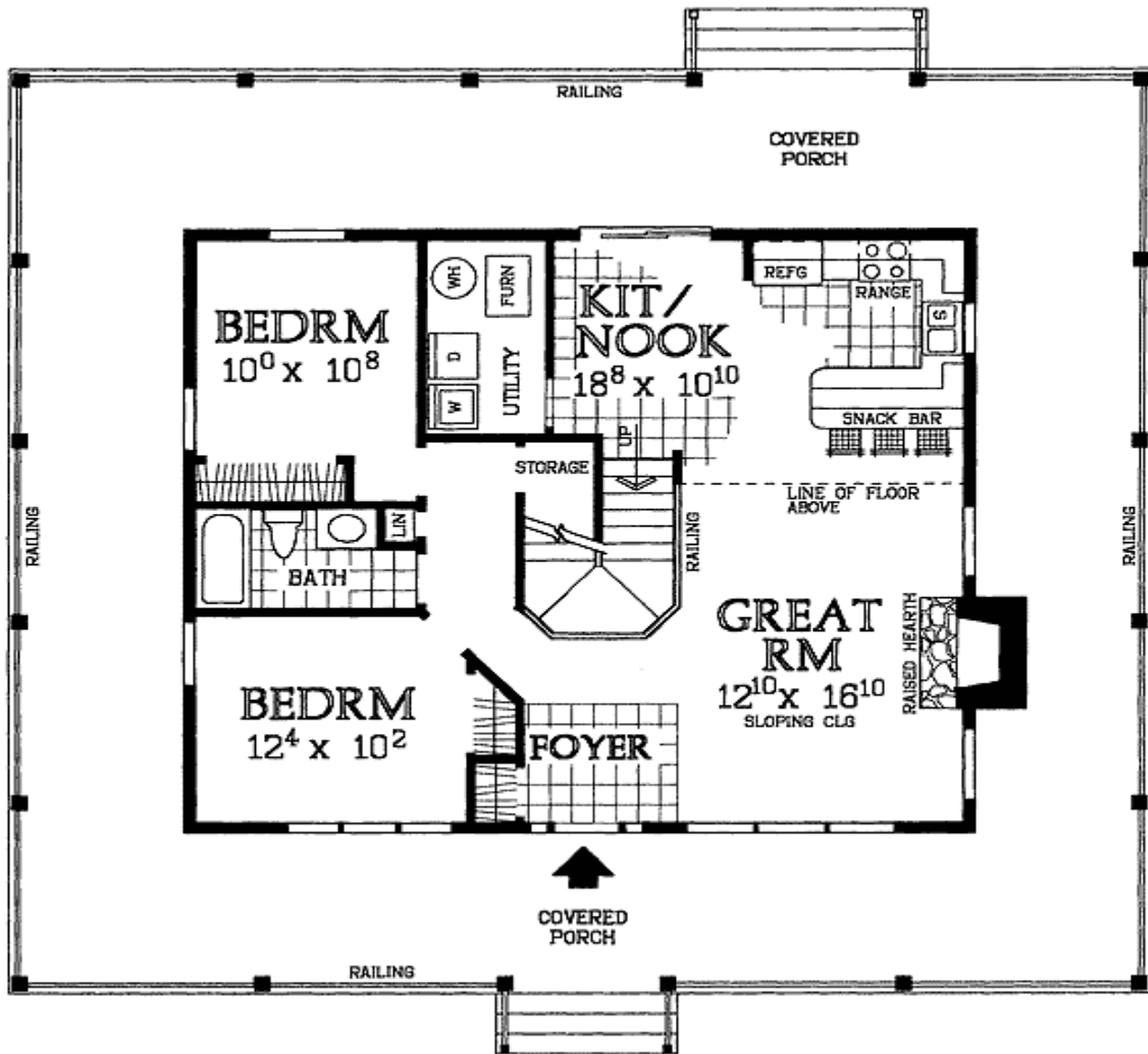
Other: Vaulted Great Room & MBR

Standard Foundations: Crawl

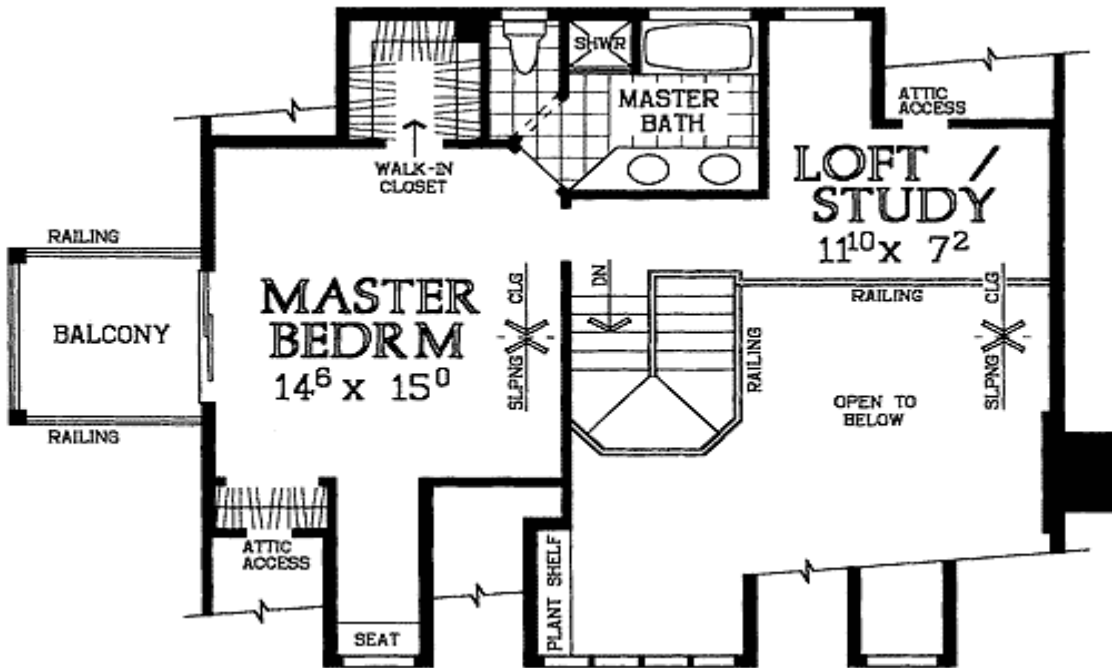
Special Features: Wrap Around Porch, PDF, Den-Office-Library-Study, Loft

One Set	Five Sets	Eight Sets	Reproducible	PDF File
\$575	\$630	\$690	\$870	\$870

## Main Level



## 2nd Level



Rear View

