

Plan W2167DR: Wrap-Around Porch



House plans are Copyright © 2009 by our architects and designers.

- A wrap-around porch with arches and another porch off the dining room enliven the exterior of this two-story country farmhouse plan. The side-entry garage suits the home to a corner lot.
- A home office or fourth bedroom lies off the entry hall. Part of the living room rises for two stories, creating a dramatic vista from the open study area above. The kitchen, breakfast area and family room with a fireplace are open to each other.
- On the second level, the master suite features a large walk-in closet and a private bath. The secondary bedrooms on this floor share a hall bath.
- Ceilings: 9' standard first level, 8' standard second level.
- Related Plan: For an alternate layout, see house plan 2141DR.

Style: Canadian, Country, Farmhouse, Metric

Total Living Area: 2426

Main Flr.: 1319

2nd Flr.: 1107

Basement Unfinished: 1,319 sq. ft.

Front Porch: 183 sq. ft.

Covered Patio: 60 sq. ft.

Total Square Feet: 4,456 sq. ft.

Attached Garage: 2 Car, 468 sq. ft.

Bedrooms: 3

Full Bathrooms: 2

Half Bathrooms: 1

Width: 52'

Depth: 46'8"

Maximum Ridge Height: 28'7"

Exterior Walls: 2x6

Ceiling Height:

Main Floor: 9'

2nd Floor: 8'

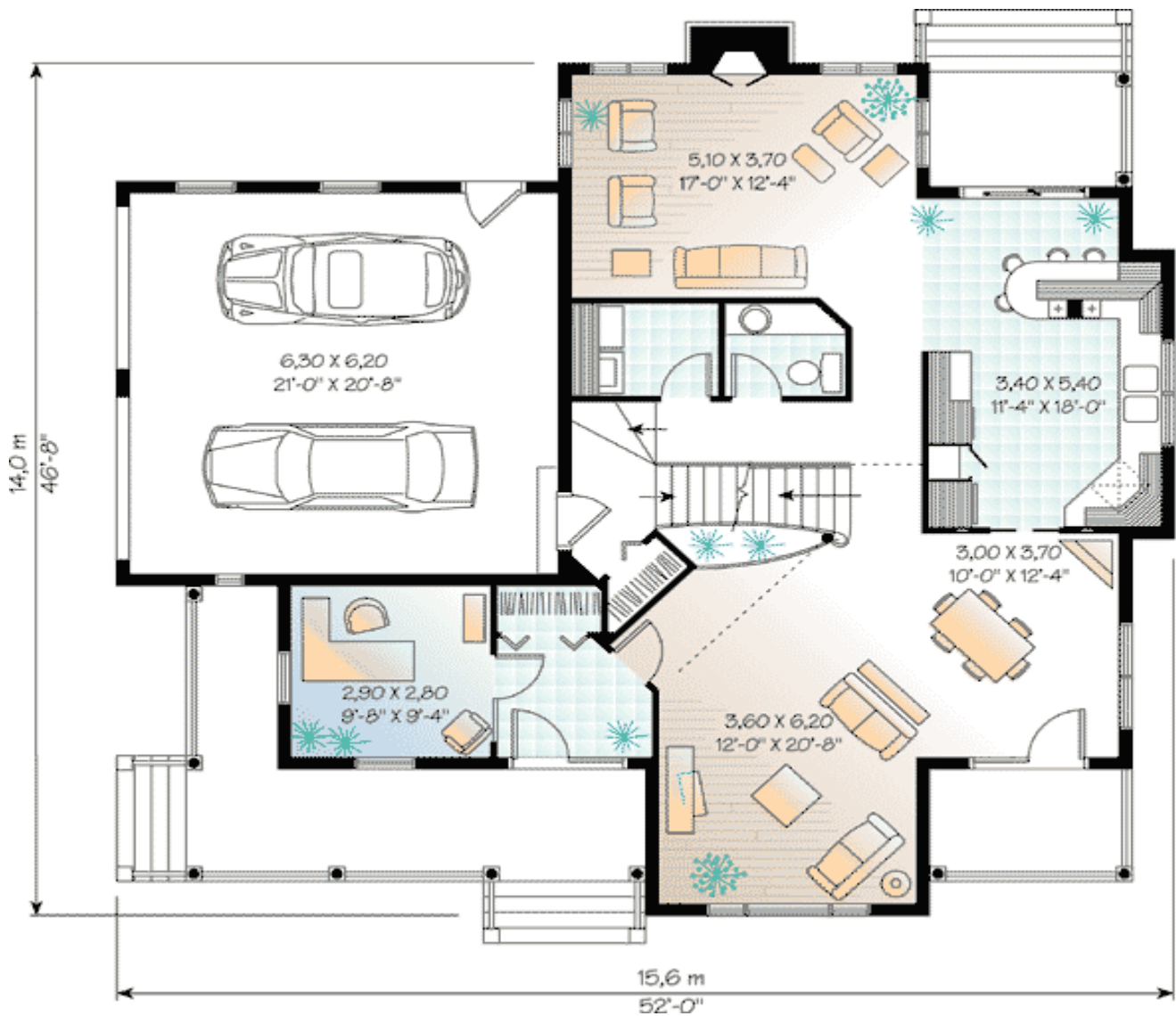
Standard Foundations: Basement

Alternate Foundations: Slab (\$295), Crawl (\$295)

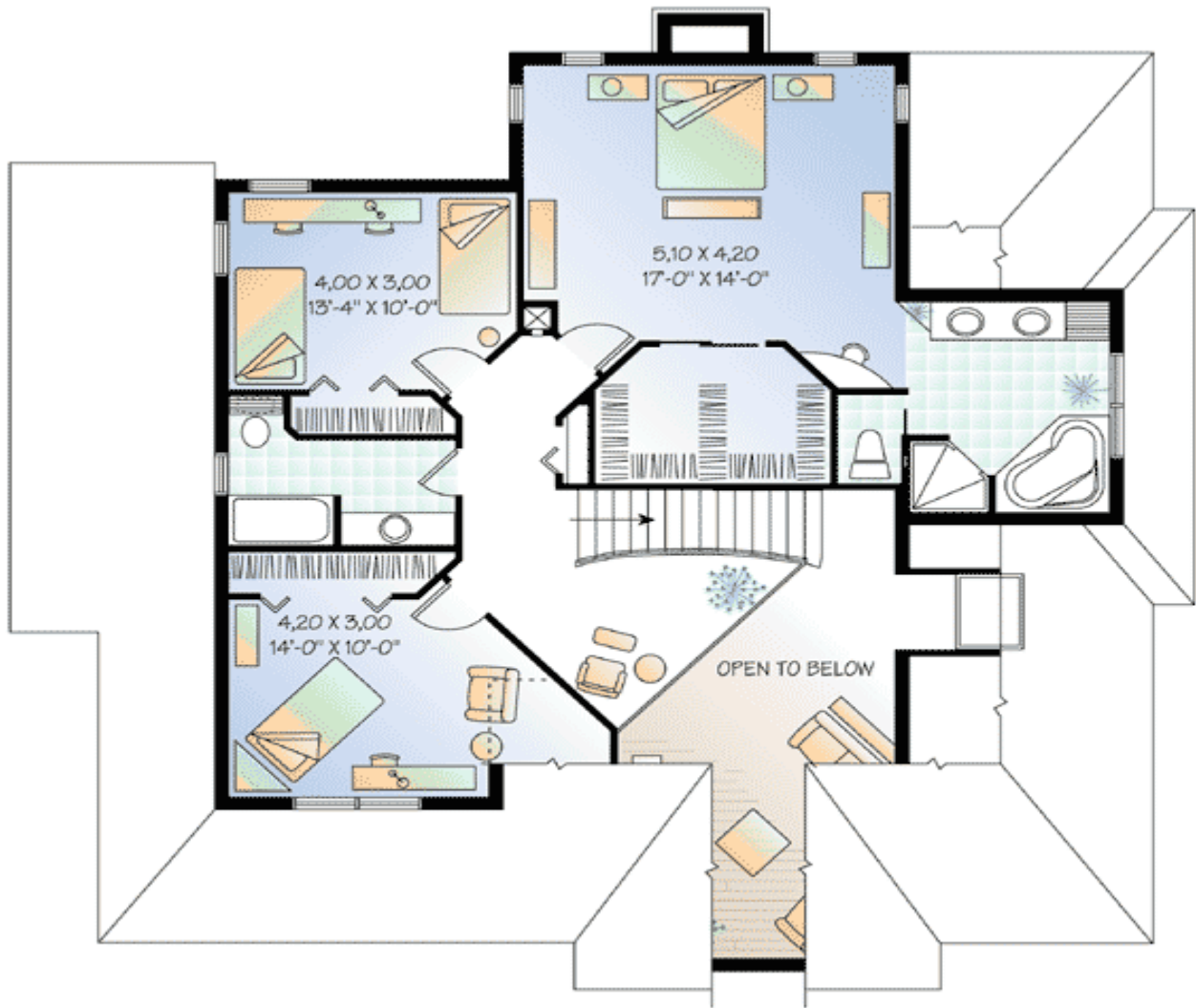
Special Features: Photo Gallery, PDF, CAD Available, Corner Lot, Loft, Wrap Around Porch

One Set	Five Sets	Eight Sets	Reproducible	PDF File	CAD
\$699	\$739	\$769	\$949	\$949	\$1,655

Main Level



2nd Level



Photo



Rear View



Kitchen

