

Plan W21531DR: Living the Dream



House plans are Copyright © 2009 by our architects and designers.

- Bigger is better when 3,068 sq.ft. of spacious living unfolds like this. Step into the foyer from your covered front porch and watch the house unfold.
- A home office and a recess mudroom flank the foyer. A coat closet for guests and a half bath are just steps away.
- Through French doors step into the large family room with fireplace and built-ins. Windows flank the fireplace letting in plenty of natural light.
- An elegant formal dining room is near the fabulously functional kitchen with island, pantry and breakfast nook with its own private patio.
- Upstairs, find a dreamy master suite with a private bath with spa tub, shower, walk-in closet and dual sinks. Two additional bedrooms share a bath.
- A second family room and a laundry room complete this floor.
- A two-car garage adds convenience.

Style: Canadian, Metric, Split Level, Traditional

Total Living Area: 3068

Main Flr.: 1523

2nd Flr.: 1545

Total Square Feet: 3,734 sq. ft.

Attached Garage: 2 Car, 666 sq. ft.

Bedrooms: 3

Full Bathrooms: 2

Half Bathrooms: 1

Width: 68'

Depth: 43'

Maximum Ridge Height: 36'

Exterior Walls: 2x6

Ceiling Height:

Main Floor: 9'

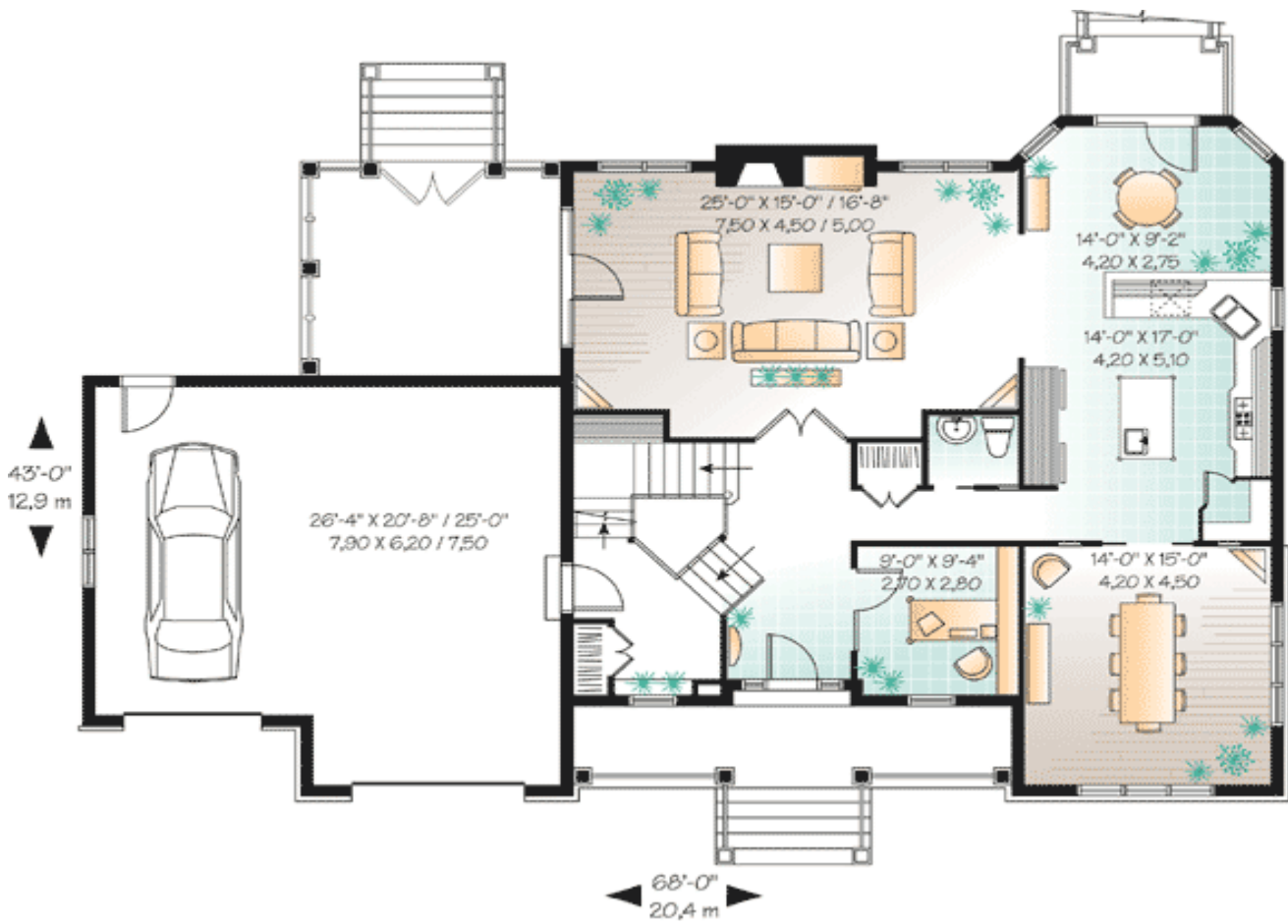
Standard Foundations: Basement

Alternate Foundations: Slab (\$295), Crawl (\$295)

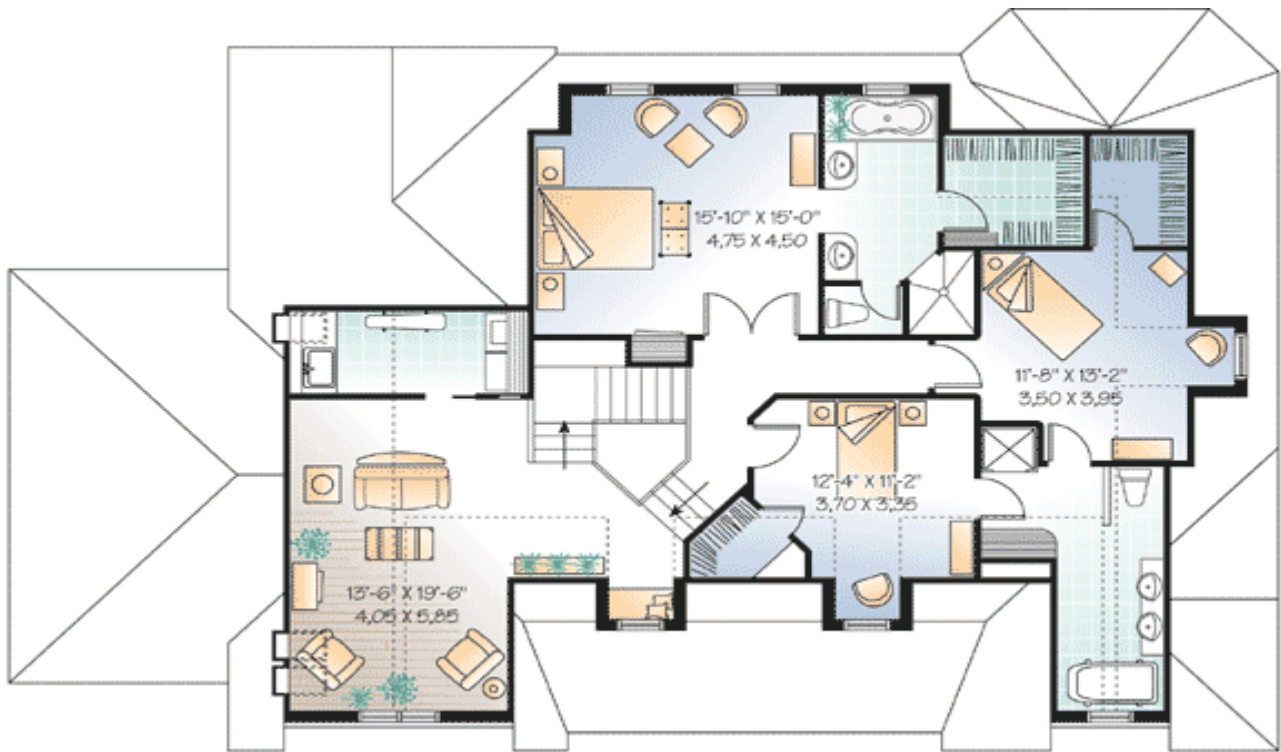
Special Features: PDF, CAD Available

One Set	Five Sets	Eight Sets	Reproducible	PDF File	CAD
\$799	\$839	\$869	\$1,049	\$1,049	\$1,765

## Main Level



## 2nd Level



Rear View

