

Architectural Designs ...selling quality house plans for over 30 years.

Plan W21499DR: Classic Cottage with Options



House plans are Copyright © 2009 by our architects and designers.

- A classic look and a well-balanced design make this a very attractive and interesting house plan.
- A coat closet in the foyer helps reduce clutter.
- You'll find a fireplace in the family room. Windows on two walls help open up the space.
- A solarium-like breakfast nook is created by a subtle bumpout by the kitchen in the back.
- Two bedrooms share a bath with spa tub and shower. The master bedroom features a walk-in closet.
- Related Plans: Need a garage? See house plan 21662DR.
- For an alternate exterior see house plan 21279DR (all stone exterior).

Style: Canadian, Metric, Southern, Traditional

Total Living Area: 1217

Main Flr.: 1217

Total Square Feet: 1,217 sq. ft.

Bedrooms: 2

Full Bathrooms: 1

Width: 36'

Depth: 38'

Maximum Ridge Height: 23'1"

Exterior Walls: 2x6

Ceiling Height:

 Main Floor: 8'

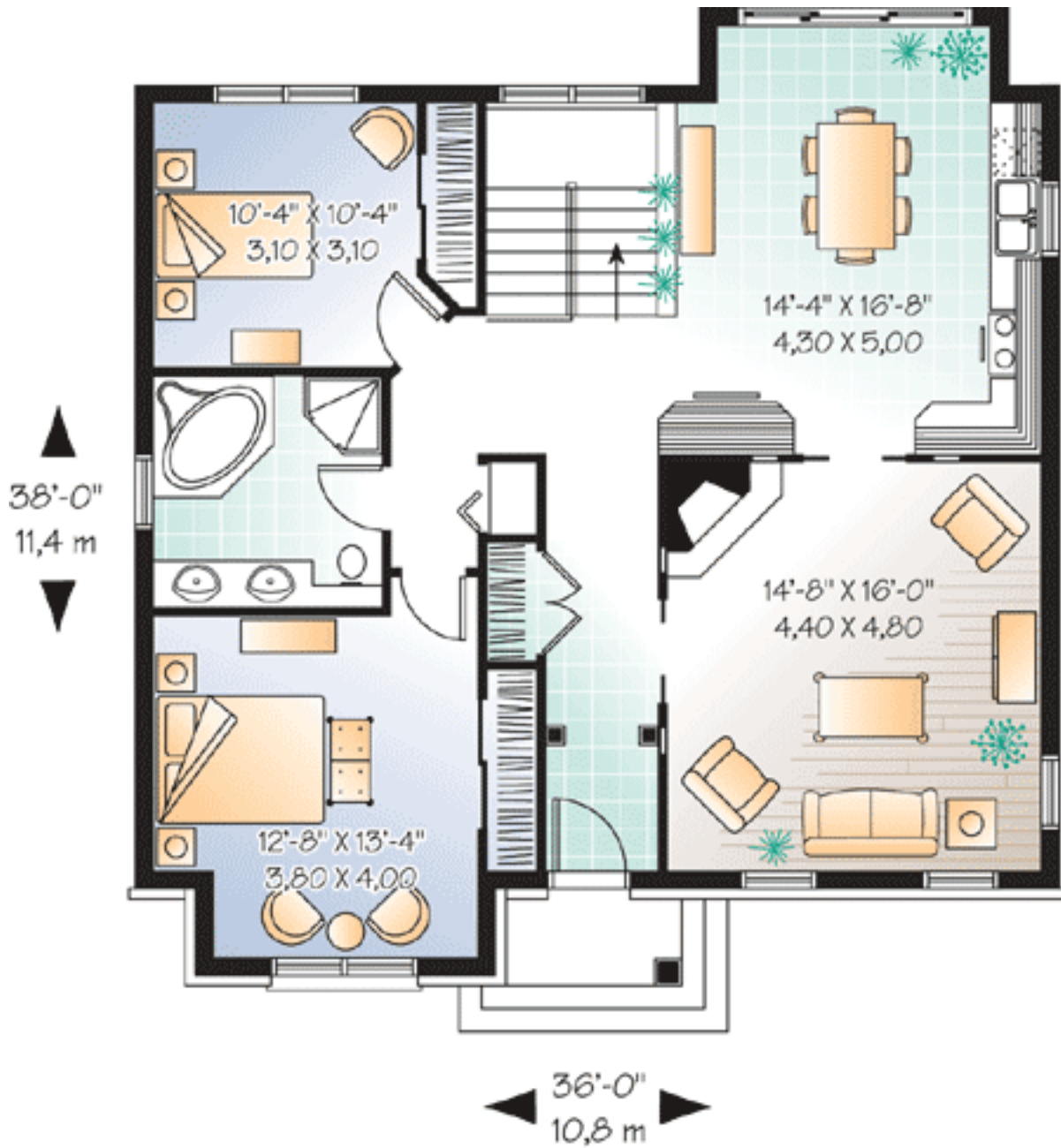
Standard Foundations: Basement

Alternate Foundations: Slab (\$295), Crawl (\$295)

Special Features: Narrow Lot, 1st Floor Master Suite, CAD Available, PDF

One Set	Five Sets	Eight Sets	Reproducible	PDF File	CAD
\$549	\$589	\$619	\$799	\$799	\$1,490

Main Level



Rear View

