

Plan W5211Q: Contemporary For a Sloping Lot



House plans are Copyright © 2009 by our architects and designers.

- With its full daylight basement, this two-level, open-plan contemporary home is ideal for a back-sloping view lot.
- Sheltered by the front bay window and roof overhang, the front door opens to the vaulted, skylit entry hall. From there you can step into the breakfast nook and the U-shaped kitchen on one side. Straight ahead is the great room, which features a fireplace with a log-storage niche and long stone hearth. A vaulted ceiling unites the great room and the adjoining dining room.
- A French door in the dining room bay and sliding-glass doors in the large great room bay lead to the wrap-around wood deck with hot tub.
- In the master suite, the compartmented bath includes a sunken tub, separate shower, angled double vanity and walk-in closet.
- The lower level consists of a spacious game room with wood stove and wet bar, two bedrooms, a bathroom and a utility room.

Style: Contemporary, Northwest

Total Living Area: 2675

Main Flr.: 1530

2nd Flr.: 1145

Basement Unfinished: 462 sq. ft.

Bonus: 1,145 sq. ft.

Attached Garage: 2 Car, 0 sq. ft.

Bedrooms: 3

Full Bathrooms: 2

Half Bathrooms: 1

Width: 49'3"

Depth: 50'8"

Maximum Ridge Height: 20'9"

Exterior Walls: 2x6

Ceiling Height:

Standard Foundations: Daylight

Special Features: Bonus Room, Narrow Lot, Sloping Lot, 1st Floor Master Suite

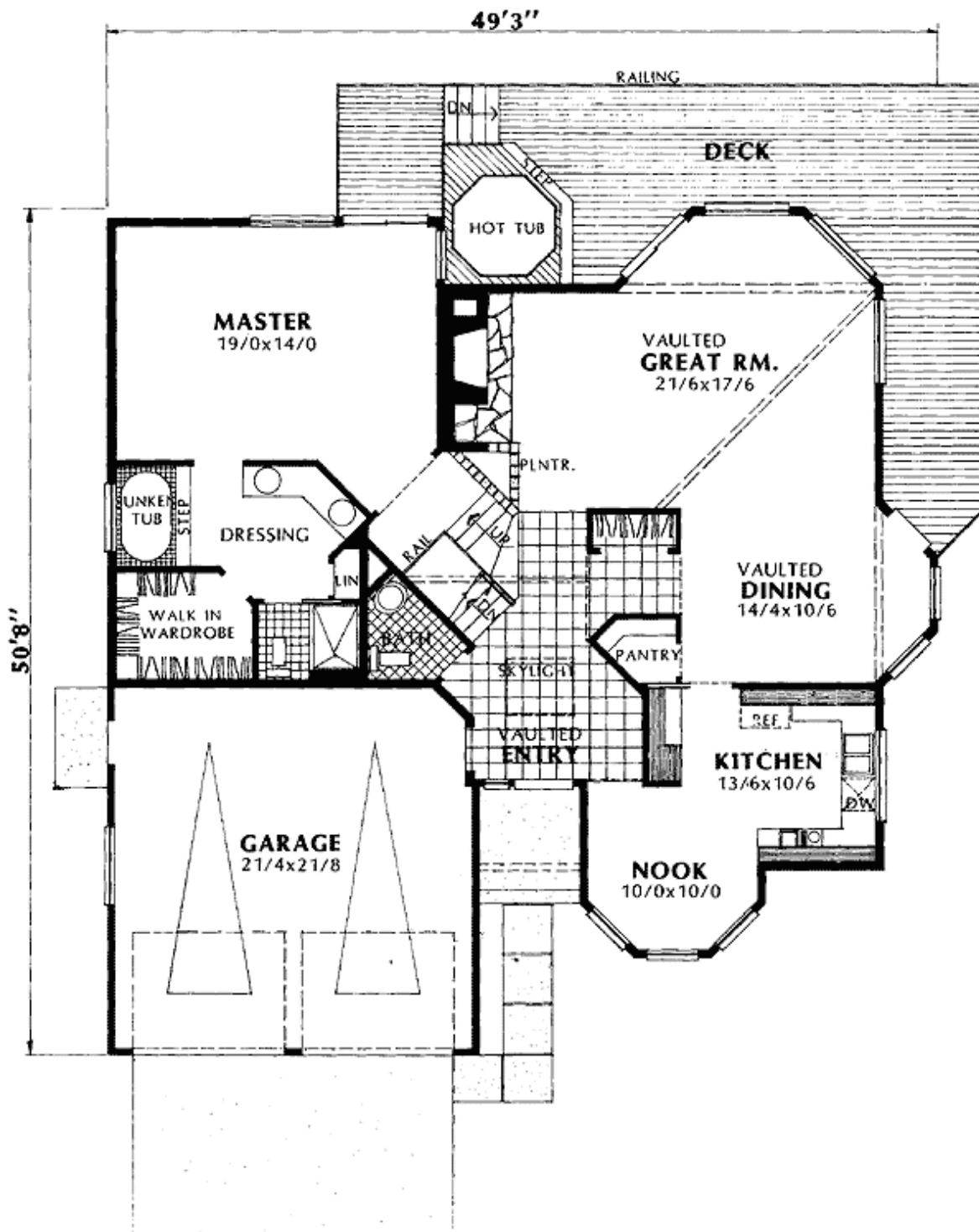
One Set
\$560

Five Sets
\$600

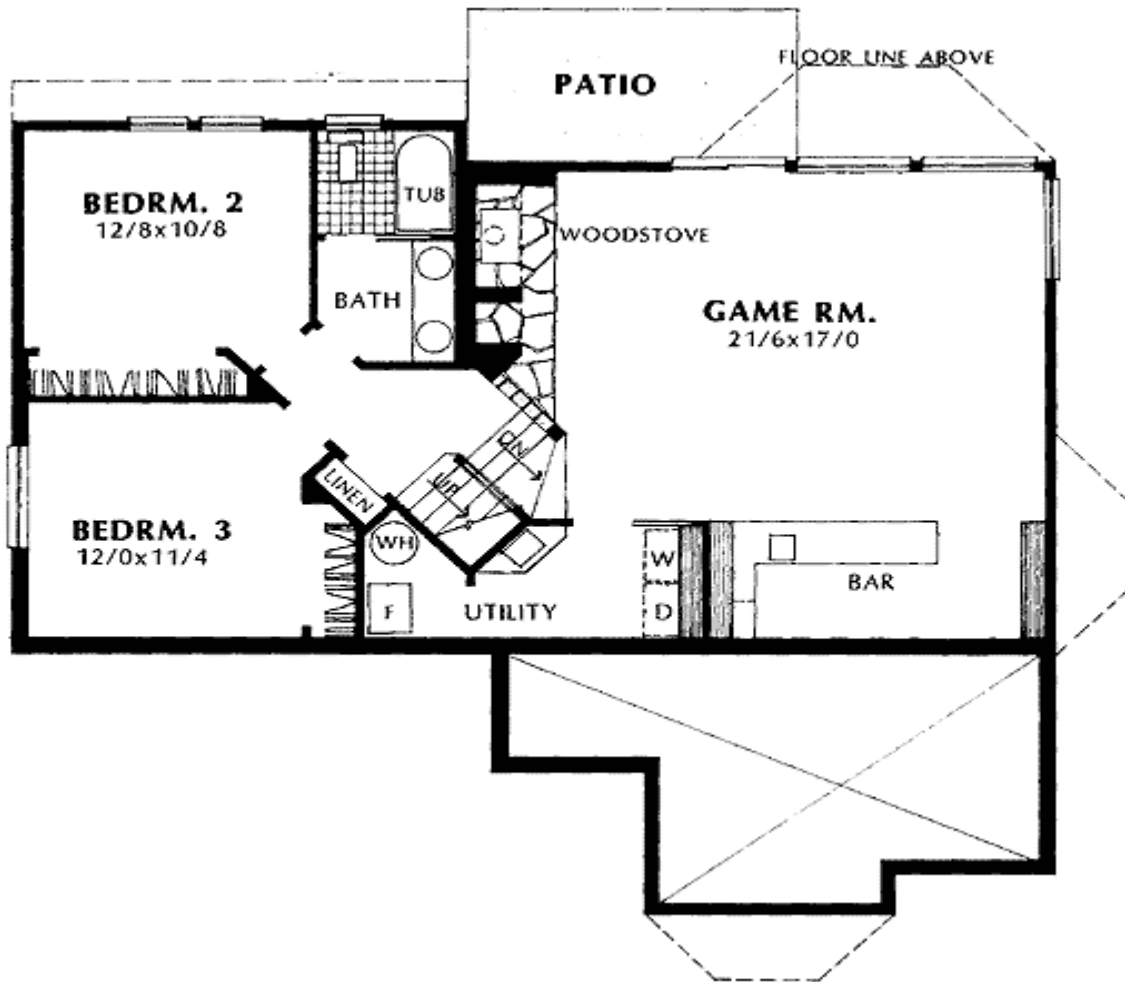
Eight Sets
\$650

Reproducible
\$750

Main Level



2nd Level



Sides/Rear

