

Architectural Designs ...selling quality house plans for over 30 years.

Plan W4728PR: New England Colonial



House plans are Copyright © 2009 by our architects and designers.

- Enhanced by a board-and-batten front door centered on the symmetrical fa'ade, this center-chimney house plan captures the charm of Colonial-era dwellings.
- The traditional layout includes a centrally located fireplace in the combined living and dining room, which occupies the left wing of the first floor. A full bath in the right wing separates the rear kitchen from the front bedroom.
- Sliding doors in the breakfast nook open to a rear deck.
- Upstairs, the master bedroom has a private bathroom. A second bedroom, a study, and another full bath complete the design.

Style: Colonial

Total Living Area: 1560

Main Flr.: 920

2nd Flr.: 640

Basement Unfinished: 920 sq. ft.

Total Square Feet: 2,921 sq. ft.

Attached Garage: 2 Car, 441 sq. ft.

Bedrooms: 4

Full Bathrooms: 3

Width: 60'

Depth: 26'

Maximum Ridge Height: 22'

Exterior Walls: 2x4

Ceiling Height:

Main Floor: 7'6"

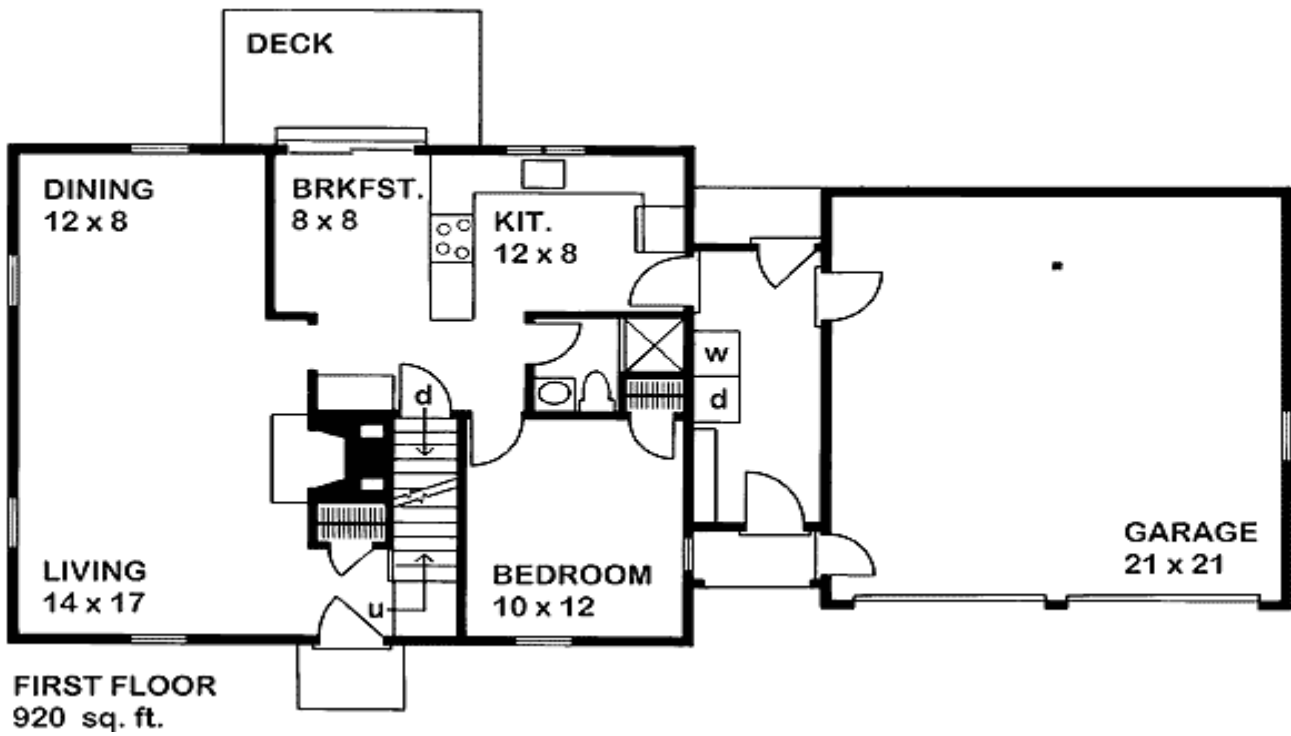
2nd Floor: 7'6"

Standard Foundations: Basement

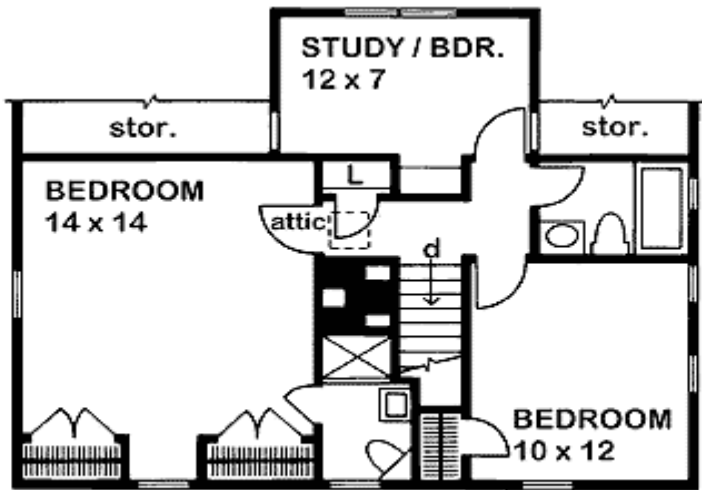
Special Features: 1st Floor Master Suite

One Set	Five Sets	Eight Sets	Reproducible
\$450	\$505	\$550	\$670

Main Level



2nd Level



SECOND FLOOR 640 sq. ft.