

Plan W44073TD: Modern Piling Loft-Style Beach Home Plan



House plans are Copyright © 2009 by our architects and designers.

- This is a modern piling home with a 'loft' style living space. It has 4 bedrooms with lots of storage and the laundry area directly off the hall. Folding doors open the entire living space to the covered porch.
- This modern beach home features clean simple lines with square wood pilings, folding doors, simple moldings, cedar shakes, cable railings, hip roof finished with corrugated metal roofing. pilings are spaced to allow parking below structure.
- Construction materials include pilings with 14' ground clearance and cable cross-bracing, wood floor system, 8" & 4" wood frame walls, wood roof trusses, 3:12 pitch hip metal roof.
- Energy-Saving Features: R-30 roof and wall insulation, on-demand water heater in central mechanical closet.
- Related Plans: See these non-raised versions - 44070TD and 44072TD.

Style: Beach, Vacation

Total Living Area: 2457

Main Flr.: 2457

Porch, Combined: 630 sq. ft.

Total Square Feet: 3,087 sq. ft.

Bedrooms: 4

Full Bathrooms: 2

Width: 72'

Depth: 39'

Maximum Ridge Height: 34'

Exterior Walls: 2x8

Ceiling Height:

 Main Floor: 12'

Standard Foundations: Piling

Special Features: PDF, Unlimited Build, CAD Available, 1st Floor Master Suite

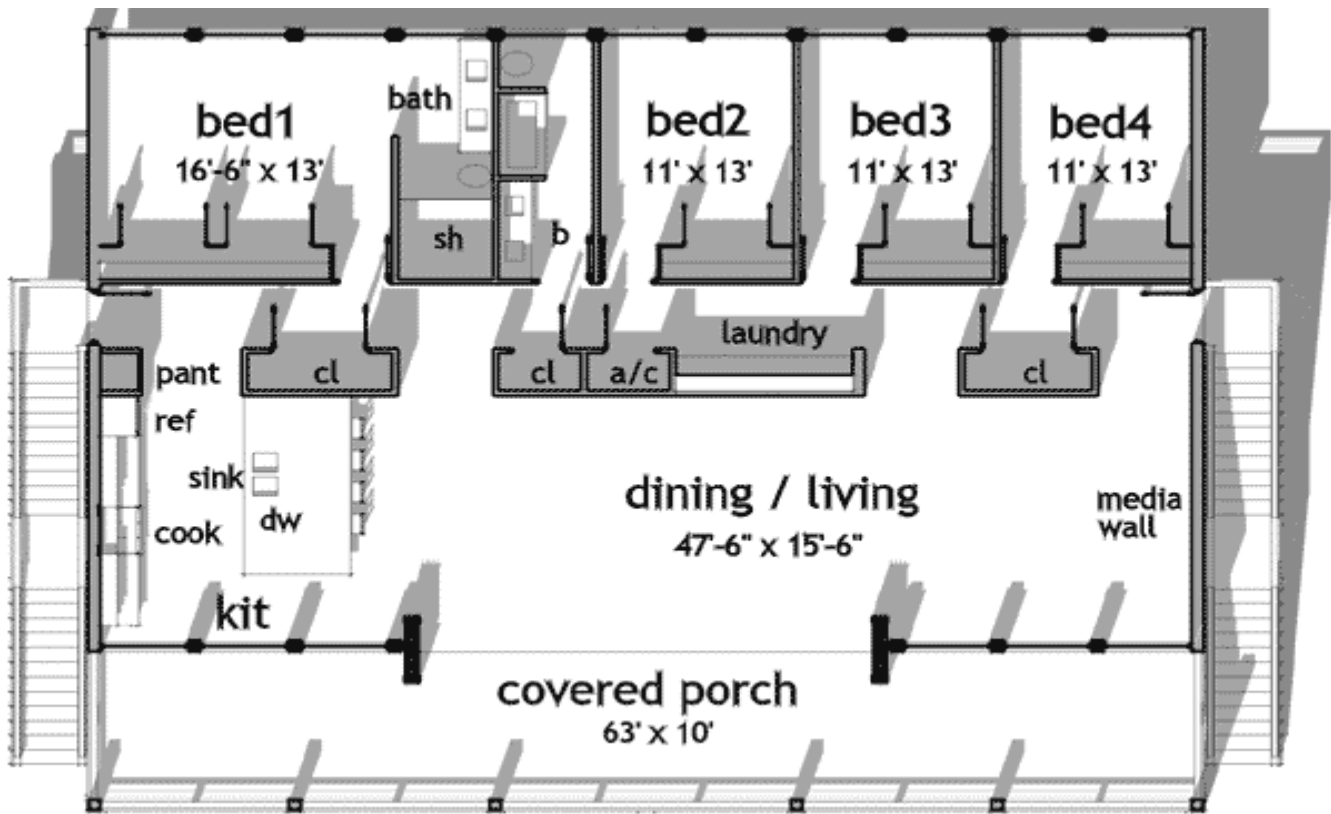
Eight Sets
\$1,200

Reproducible
\$1,200

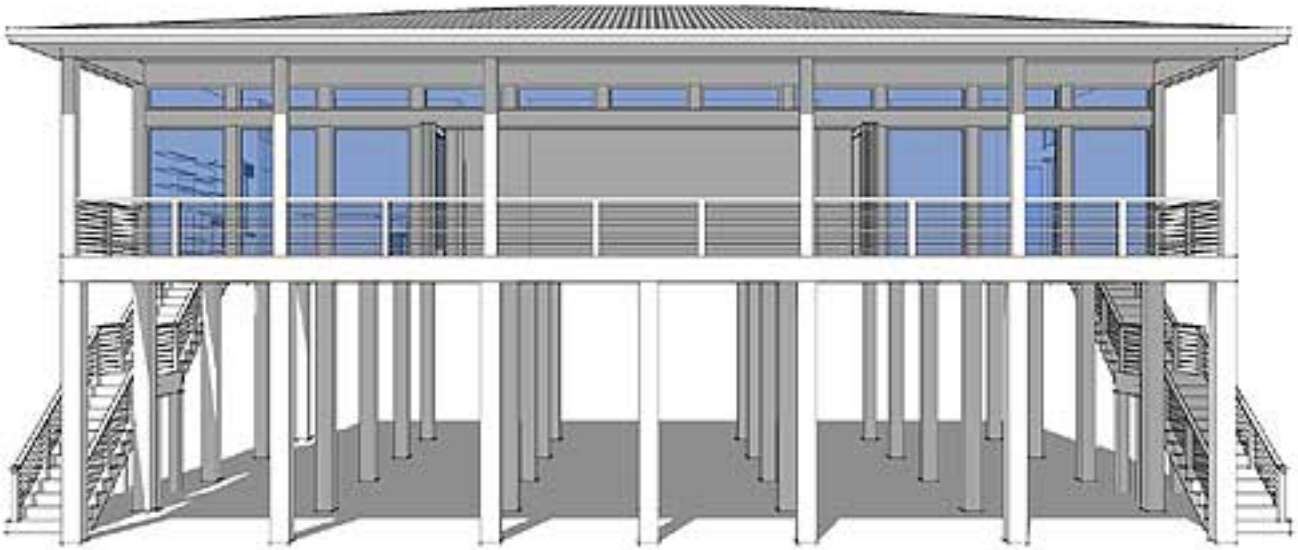
PDF File
\$1,000

CAD
\$1,000

Main Level



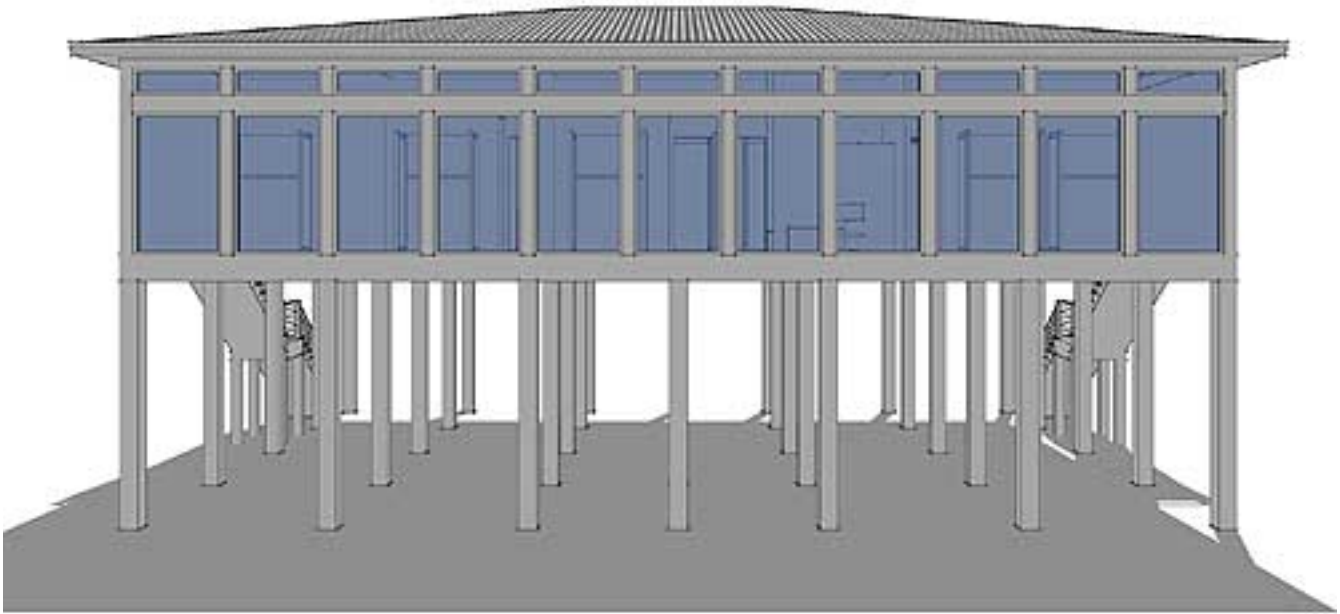
Elevation #2



Left Side



Rear View



Living Room

