

Plan W35259GH: Great Views



House plans are Copyright © 2009 by our architects and designers.

- This open-concept house plan, perfect for a sloping lot, imparts an air of spaciousness. A loft and volume ceilings, in addition to a multitude of windows, highlight the sense of openness in this house plan.
- The covered front porch extends functional spaces to the outside, as does the rear deck.
- The chef will enjoy the walk-in pantry and corner windows. The peninsula bar creates an efficient space for dining and socializing.
- Conveniently located on the main floor, the master bedroom has a deep walk-in closet. The luxurious master bath features a private commode, a two-head shower with a built-in bench, jacuzzi tub and his-and-her sinks.
- A loft overlooking the great room, two bedrooms and a shared bath plus storage round out the second floor.
- Related Plans: Need an attached two-car garage? See house plan 35312GH. Get a two-car drive-under garage with house plan 35313GH.
- Other related house plans include 35108GH and 35165GH with a finished lower level with a fireplaced rec room, wet bar, storage and office space.

Style: Contemporary, Metric, Mountain, Northwest, Vacation

Total Living Area: 2281

Main Flr.: 1436

2nd Flr.: 845

Basement Unfinished: 1,436 sq. ft.

Total Square Feet: 3,717 sq. ft.

Bedrooms: 3

Full Bathrooms: 2

Half Bathrooms: 1

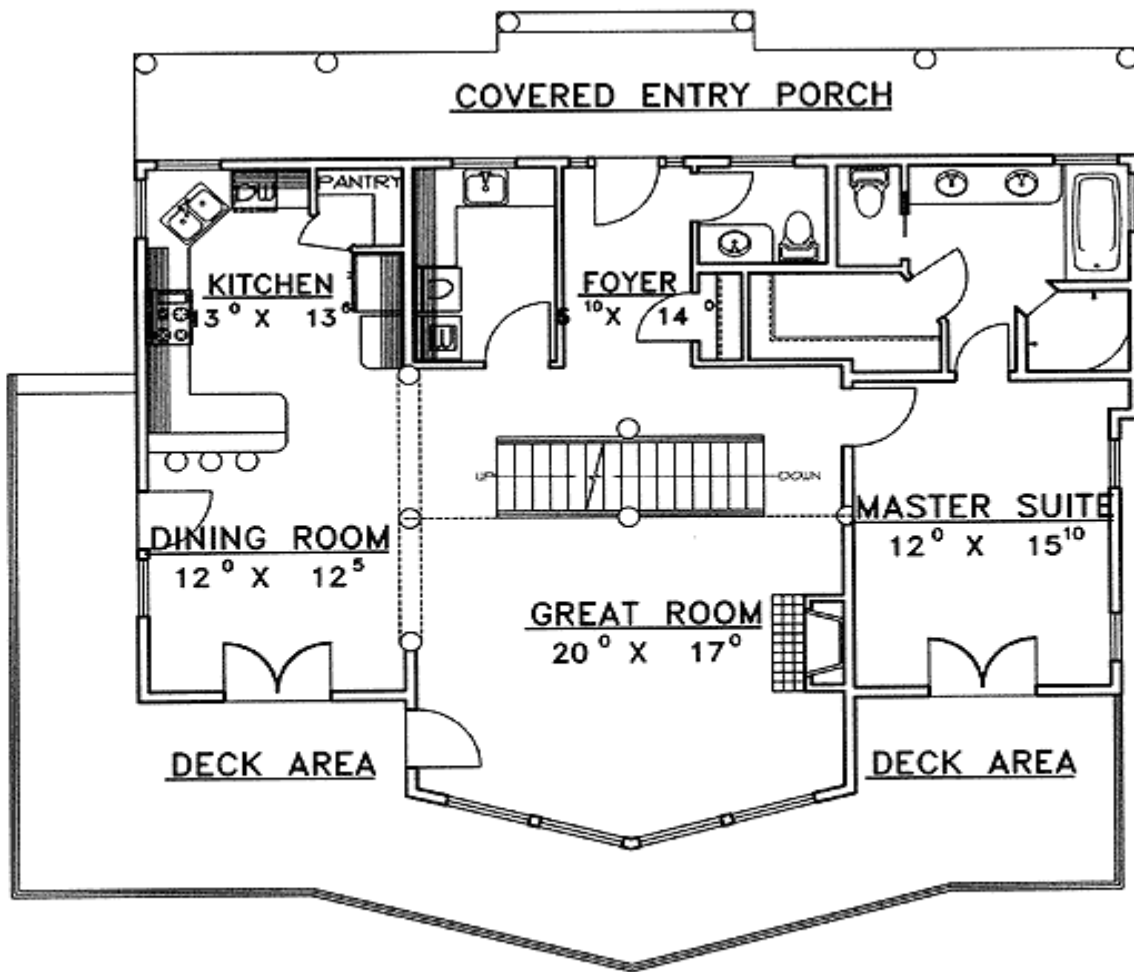
Width: 53'
Depth: 35'10"
Maximum Ridge Height: 32'6"
Exterior Walls: 2x6
Ceiling Height:
Main Floor: 9'
Lower Floor: 9'
2nd Floor: 6'2"-9'6"
Other: 9'5" Vaulted Loft

Standard Foundations: Walkout

Special Features: Loft, Wrap Around Porch, CAD Available, Sloping Lot, PDF, 1st Floor Master Suite, Photo Gallery

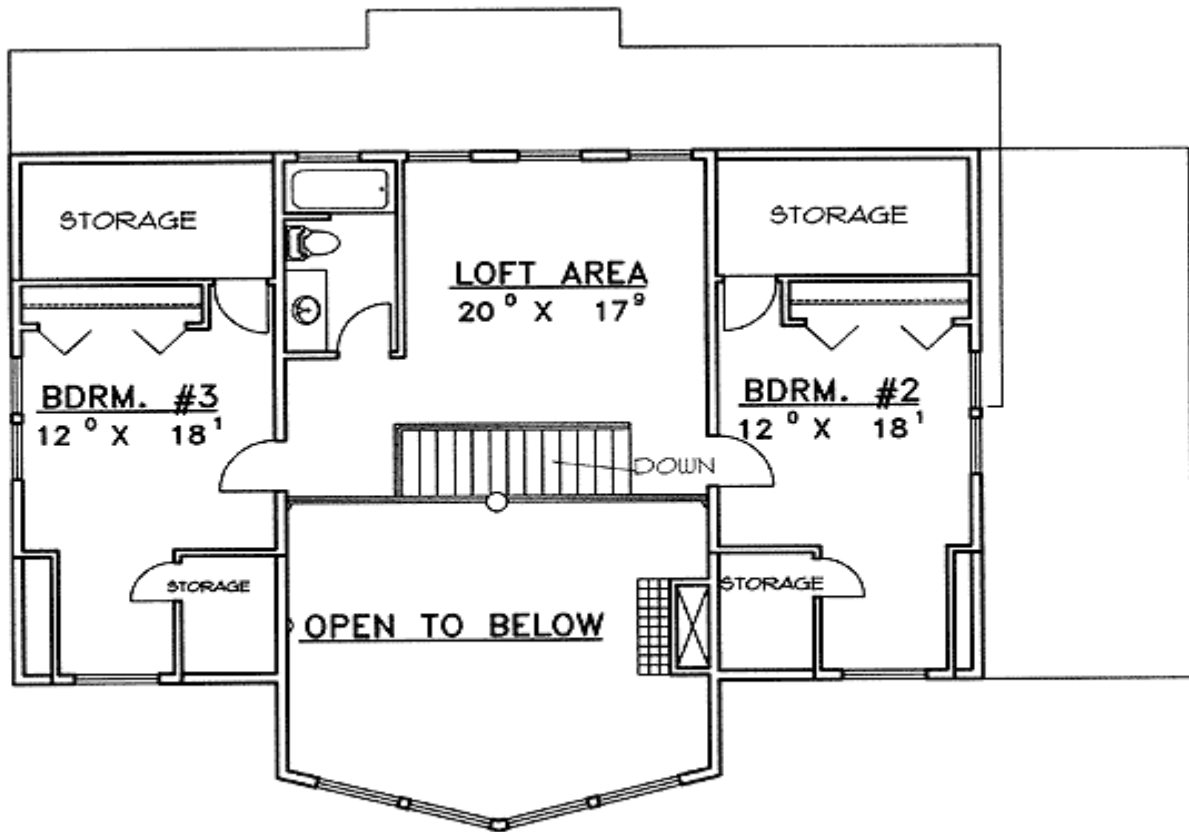
Five Sets	Eight Sets	Reproducible	PDF File	CAD
\$725	\$820	\$750	\$900	\$900

Main Level



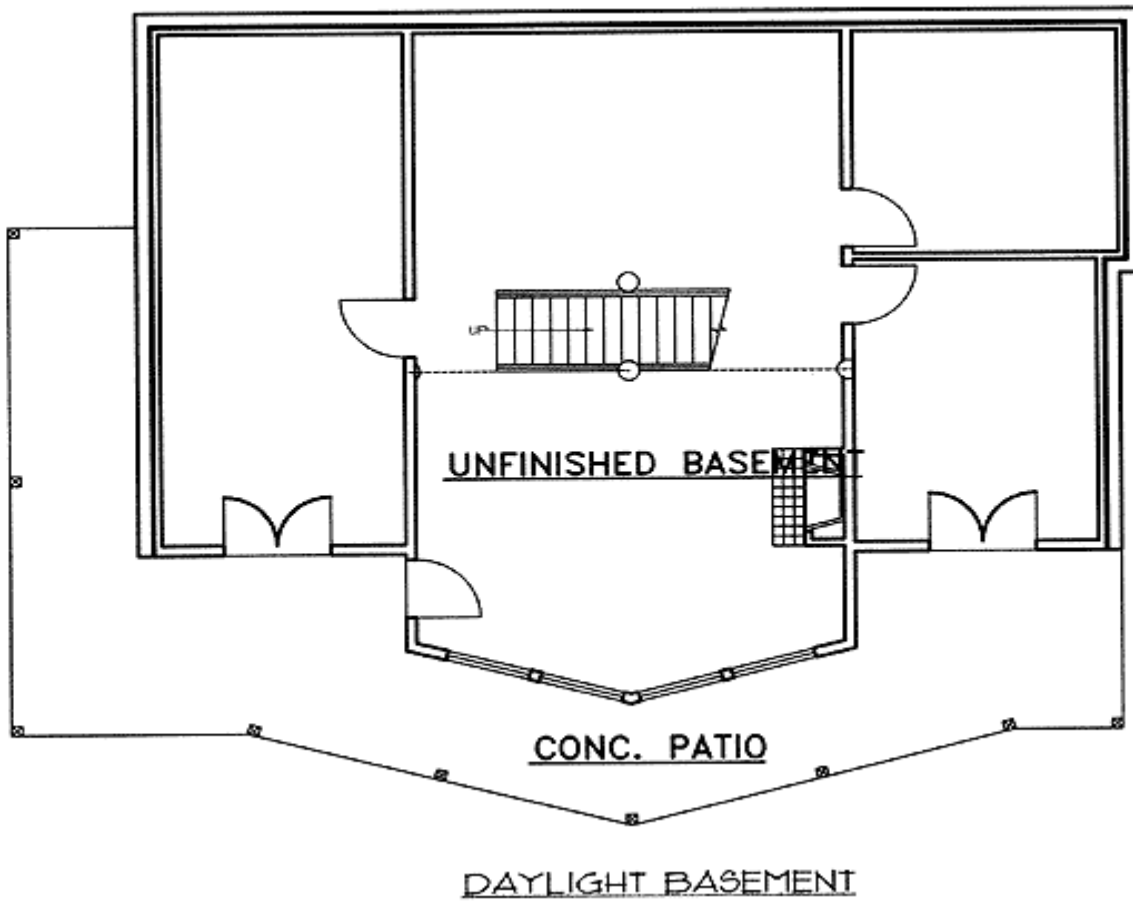
MAIN LEVEL FLOOR PLAN

2nd Level

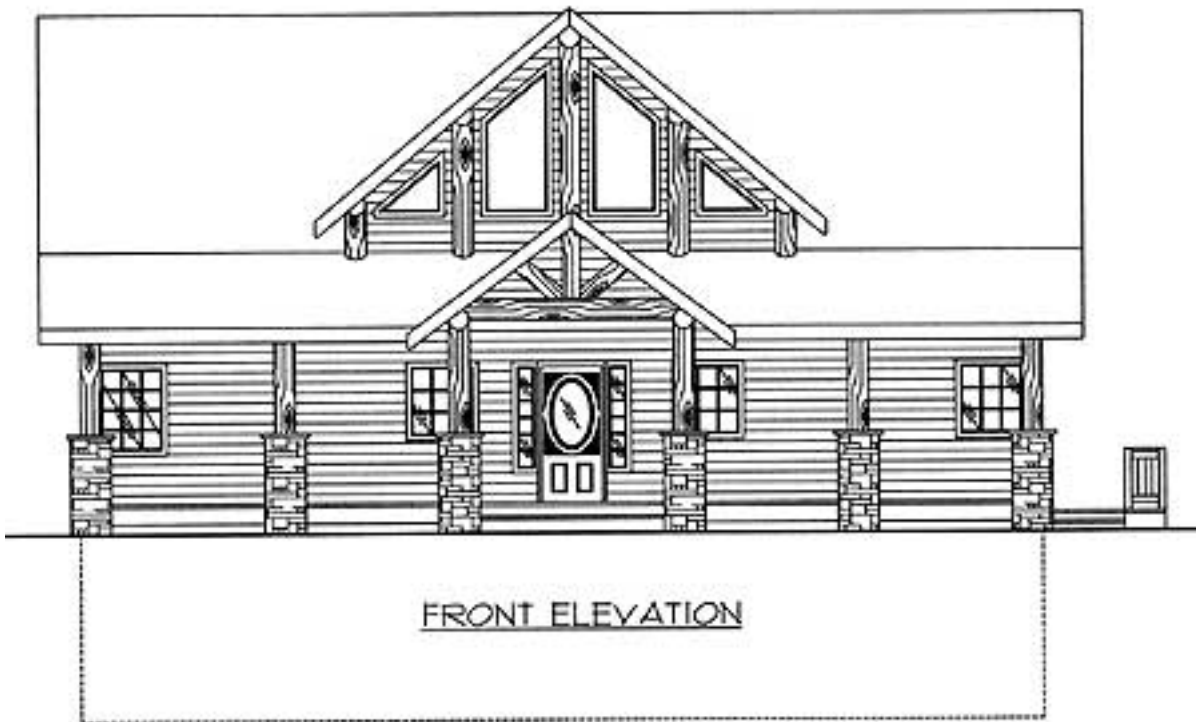


UPPER LEVEL FLOOR PLAN

Lower Level



Elevation #2



Great Room

