

Architectural Designs ...selling quality house plans for over 30 years.

Plan W59040ND: Covered Porch Charm



House plans are Copyright © 2009 by our architects and designers.

- The covered porch spreads across the front and around to the back of this log home plan.
- The family room, open to above, has a fireplace. The dining room, with access to sun room and grilling porch, opens to the kitchen with island and plenty of cabinet space.
- Through the kitchen you reach the mudroom with washer/dryer with access to bath, pantry and garage Vestibule.
- Down the hall past bedroom two with walk-in closet is the master suite with two walk-in closets and private bath. An expansive Loft occupies the upper level.
- Ceilings: 8' standard.
- Foundation: Basement, crawl space, daylight basement. Please specify your preference when ordering.

Style: Log, Mountain

Total Living Area: 2821

Main Flr.: 2056

2nd Flr.: 765

Porch, Combined: 1,396 sq. ft.

Total Square Feet: 4,842 sq. ft.

Attached Garage: 2 Car, 625 sq. ft.

Bedrooms: 2

Full Bathrooms: 2

Width: 76'10"

Depth: 77'8"

Exterior Walls: Log

Ceiling Height:

Main Floor: 8'

Standard Foundations: Crawl

Alternate Foundations: Walkout (\$250), Basement (\$250)

Special Features: PDF, 1st Floor Master Suite

One Set
\$605

Five Sets
\$710

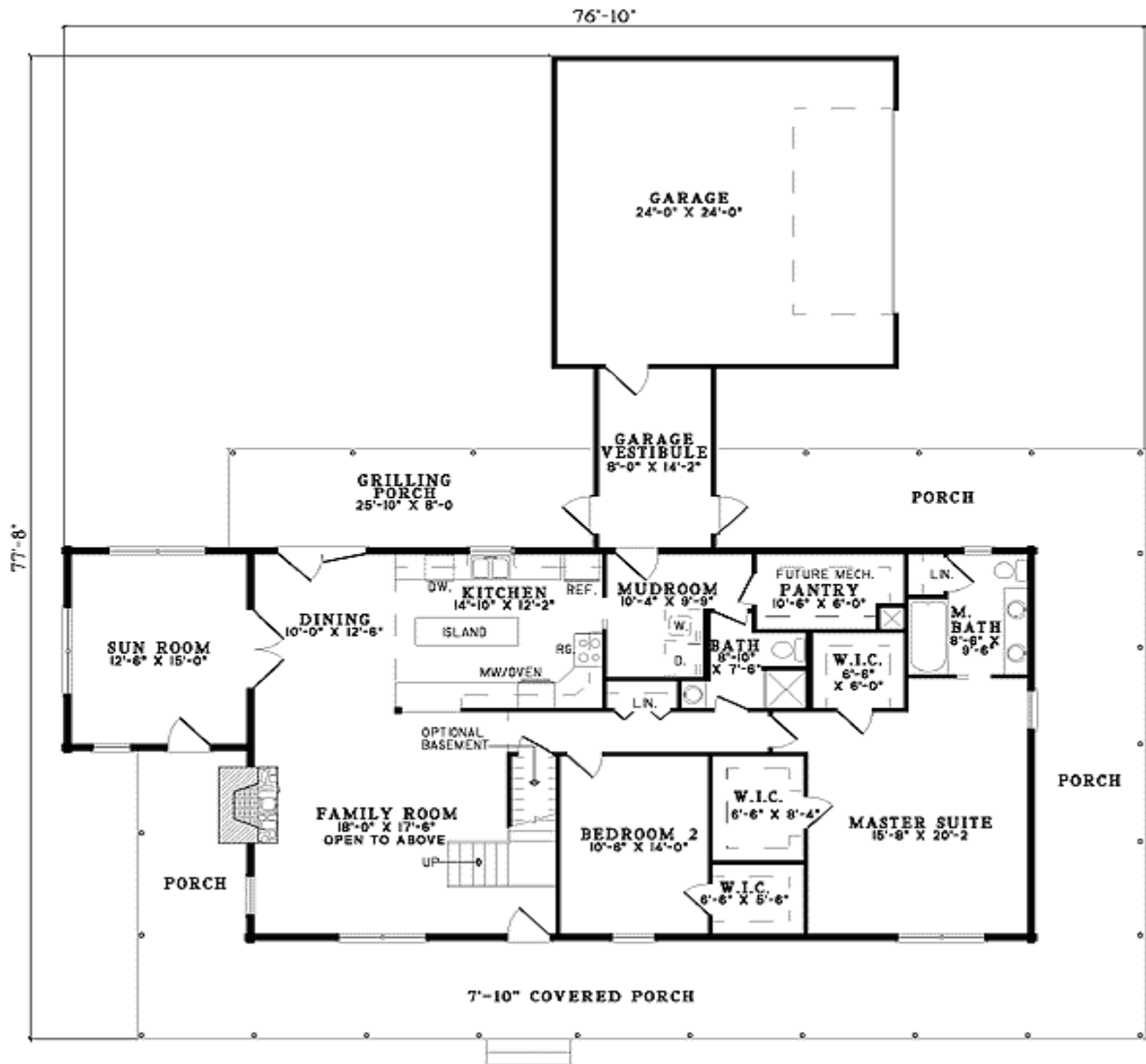
Eight Sets
\$750

Reproducible
\$970

PDF File
\$970

CAD
\$1,650

Main Level



2nd Level

