

Architectural Designs ...selling quality house plans for over 30 years.

Plan W7575DD: Adorable Cape Cod



House plans are Copyright © 2009 by our architects and designers.

- A covered porch in the front and a patio in the rear make for enjoyable outdoor living and entertaining at this Cape Cod abode.
- You can bask in the warmth from the fireplace in the spacious living room. Farther back, the kitchen-dining combination includes an island and a snack bar.
- Privately located, the master suite includes a bath with a garden tub, separate shower and a walk-in clothes closet.
- The upstairs bedrooms, both with dormer alcoves and a wall of closet space, share a hall bath.
- Ceilings: 8' standard.
- Foundation: basement.

Style: Cape Cod, Country

Total Living Area: 1757

Main Flr.: 1080

2nd Flr.: 677

Basement Unfinished: 1,080 sq. ft.

Front Porch: 192 sq. ft.

Total Square Feet: 3,605 sq. ft.

Attached Garage: 2 Car, 576 sq. ft.

Bedrooms: 3

Full Bathrooms: 2

Half Bathrooms: 1

Width: 60'

Depth: 36'

Maximum Ridge Height: 22'6"

Exterior Walls: 2x6

Ceiling Height:

Main Floor: 8'

2nd Floor: 8'

Standard Foundations: Basement

Alternate Foundations: Slab (\$150), Crawl (\$150)

Special Features: PDF, 1st Floor Master Suite, CAD Available

One Set
\$585

Five Sets
\$650

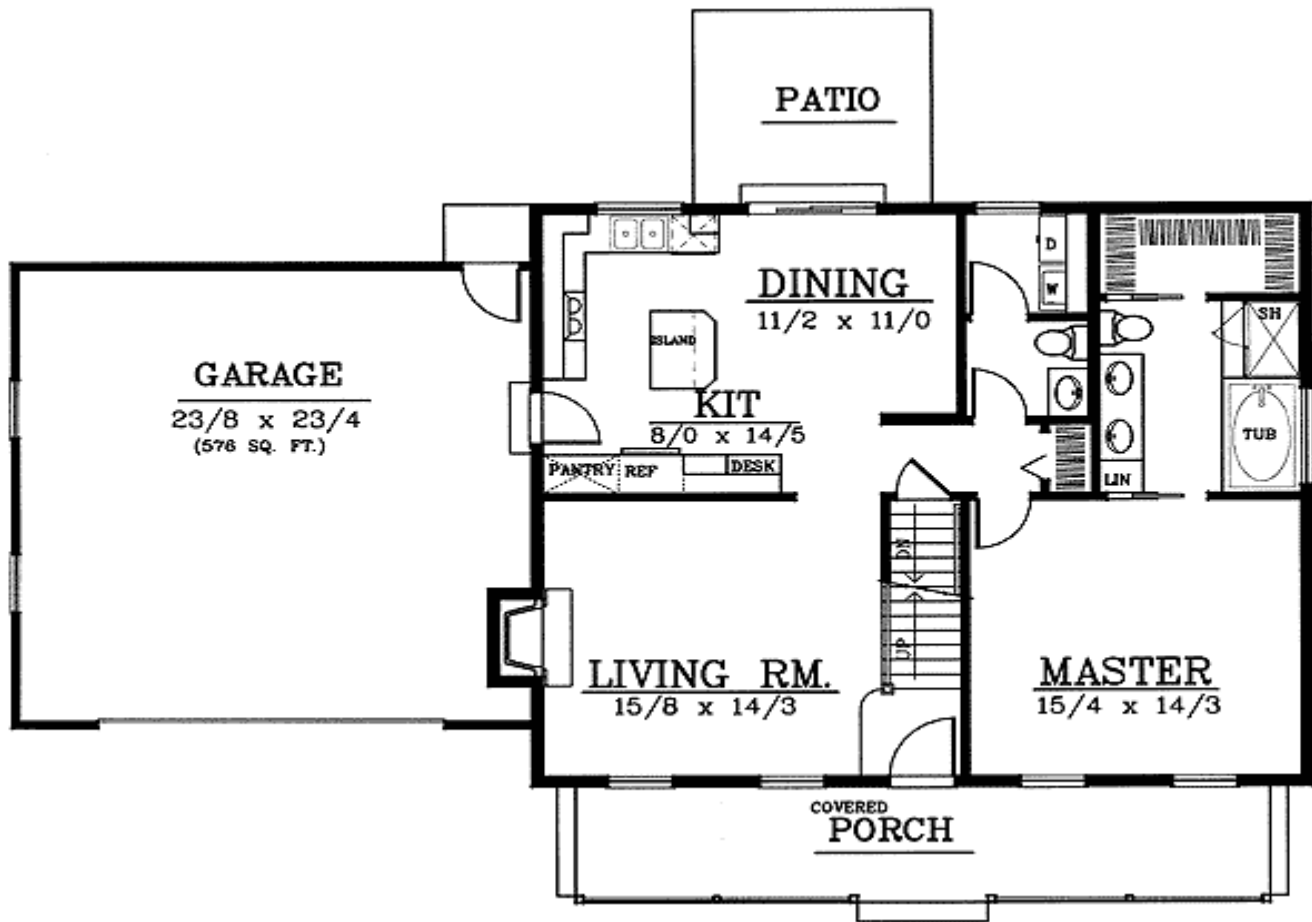
Eight Sets
\$770

Reproducible
\$750

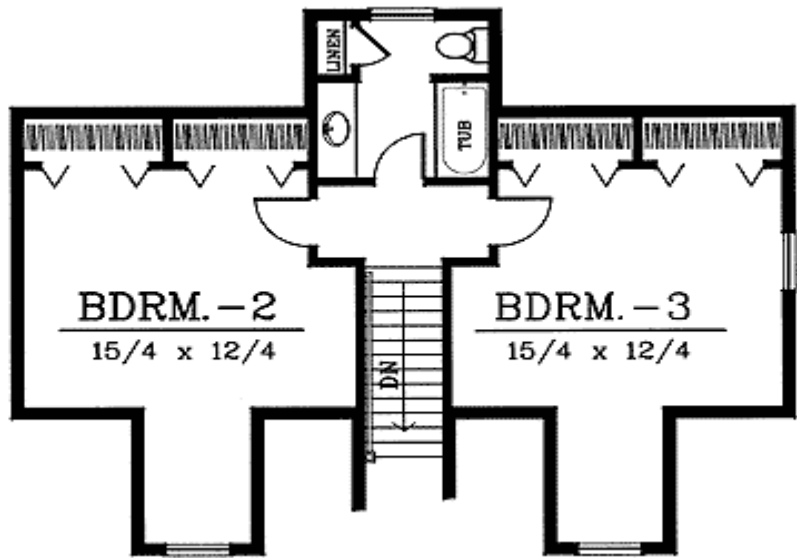
PDF File
\$750

CAD
\$1,300

Main Level



2nd Level



Rear View



REAR ELEVATION