

Plan W51056MM: French Country Favorite



House plans are Copyright © 2009 by our architects and designers.

- This ever popular French Country house plan showcases beautiful exterior style as well as a floorplan packed with great features.
- The great room features a gas log fireplace flanked by built-in cabinets and 10' ceilings.
- The well-equipped kitchen contains all the modern amenities as well as a large walk-in pantry for storage.
- Two over-sized bedrooms, each with a large closet, share a bath complete with dual lavatories. The master suite includes a trayed ceiling, large walk-in closet, and bath with all the extras.
- The first floor also has a space for that much desired home office.
- Future space upstairs has a bath room and a bonus space perfect for a playroom, extra bedroom, or just extra storage.
- Related Plans: Need more space? See house plan 51050MM (2,851 s.f.).
- Need less space? See house plan 51044MM (1,600 s.f.).

Style: European, French Country, Southern

Total Living Area: 2401

Main Flr.: 2401

Bonus: 384 sq. ft.

Front Porch: 28 sq. ft.

Rear Porch: 258 sq. ft.

Total Square Feet: 3,821 sq. ft.

Attached Garage: 2 Car, 750 sq. ft.

Bedrooms: 3

Full Bathrooms: 2

Half Bathrooms: 1

Width: 77'

Depth: 55'6"

Maximum Ridge Height: 24'7"

Exterior Walls: 2x4

Ceiling Height:

Main Floor: 9'

2nd Floor: 8'

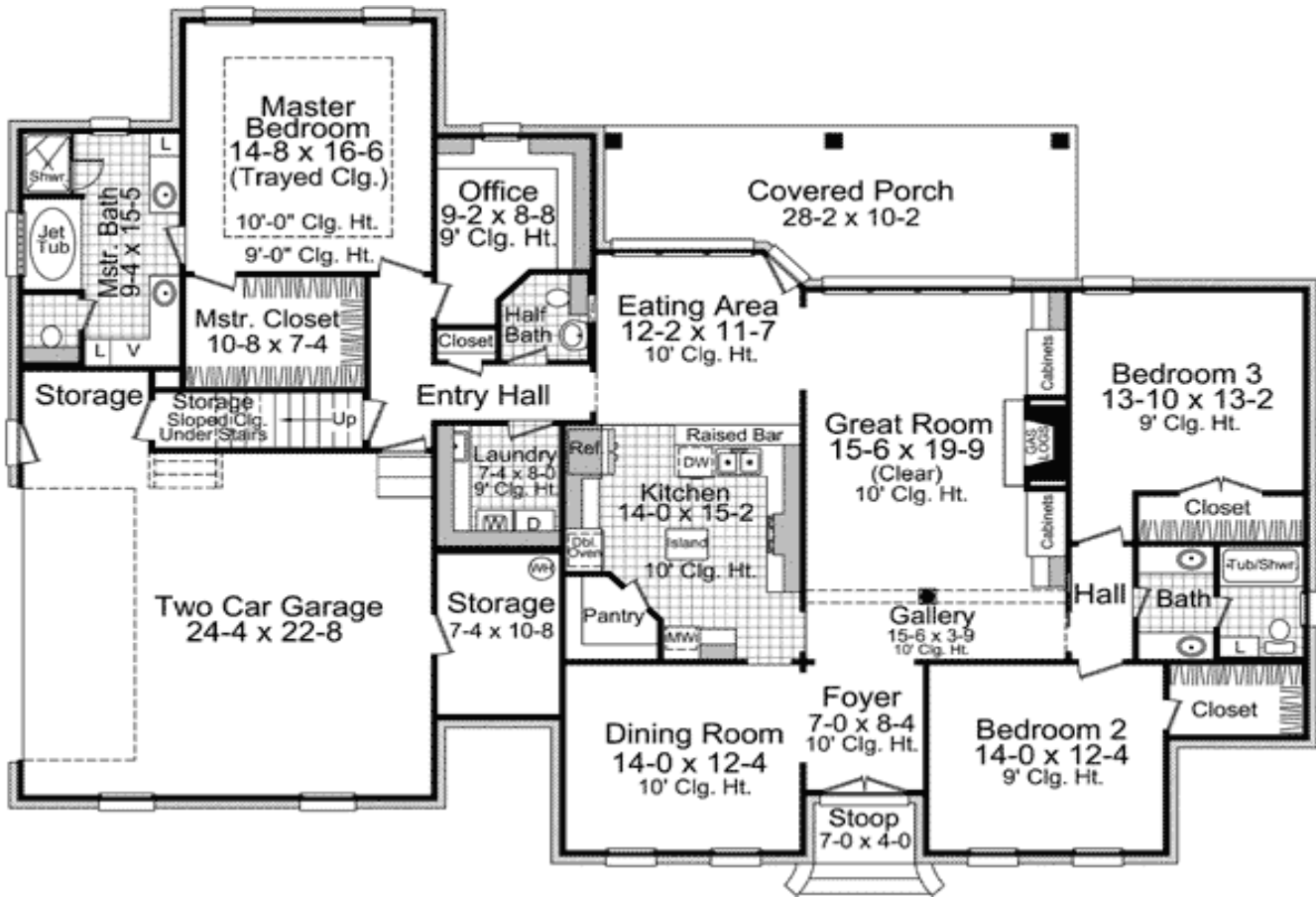
Other: 10' Great Room, Foyer, Dining & Eating; 9'-10' Tray MBR

Standard Foundations: Slab, Crawl

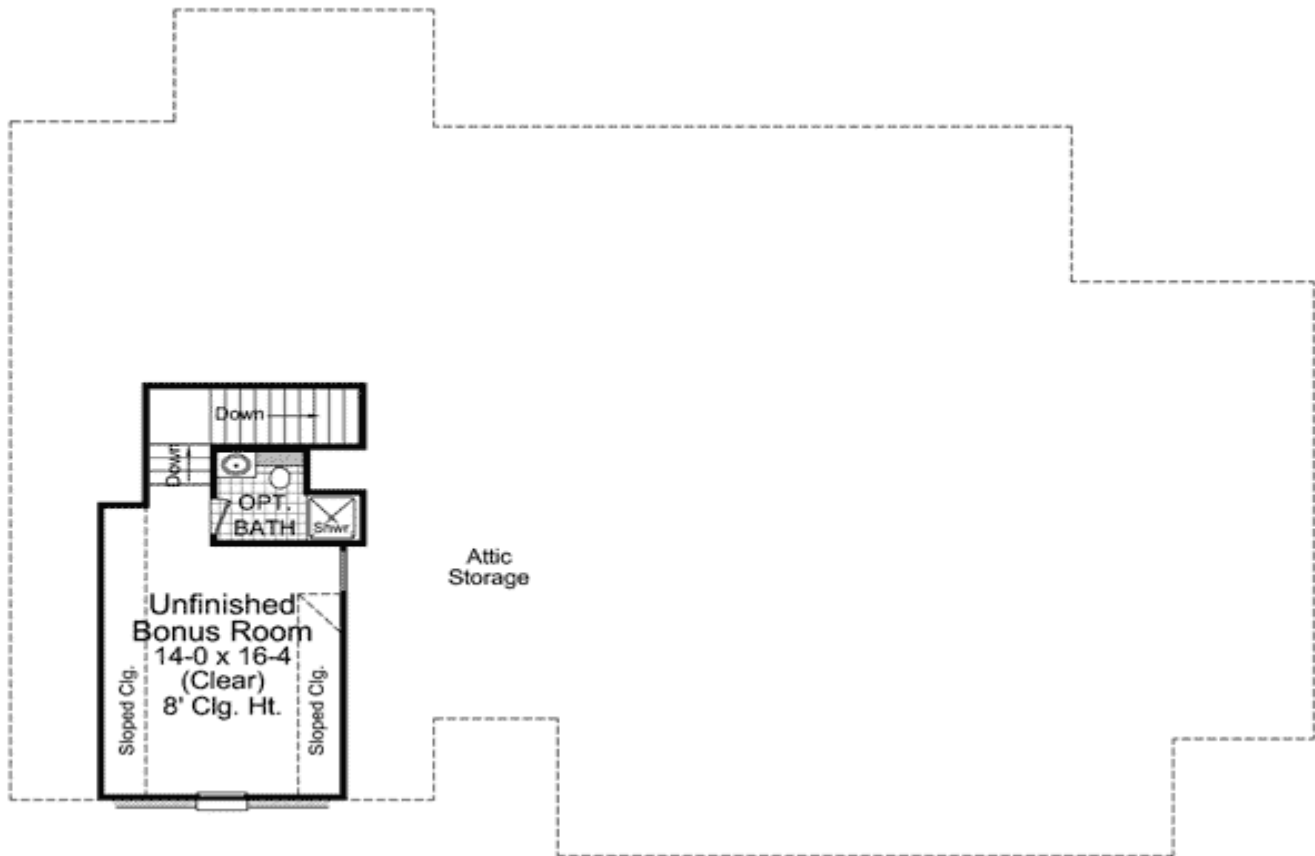
Special Features: CAD Available, 1st Floor Master Suite, PDF, Jack & Jill Bath, Split Bedrooms, Bonus Room, Butler Walk-in Pantry

One Set	Five Sets	Eight Sets	Reproducible	PDF File	CAD
\$645	\$705	\$840	\$865	\$865	\$1,415

## Main Level



## Bonus



Rear View

