

Plan W69080AM: Garage Cottage



House plans are Copyright © 2009 by our architects and designers.

- Doing double duty beautifully, this three-car garage offers space for a two-bedroom apartment on its upper level. The exterior is reminiscent of the architecture of the Arts and Crafts movement and features sturdy columns on stone bases, lap siding and cedar shingles.
- Stairs in the garage lead up to a thoughtfully arranged guest suite with two bedrooms and a large living/dining area. Both bedrooms have roomy closets and wide windows along one wall. Double doors in the living area open to a charming railed deck. An L-shaped kitchen offers a full complement of appliances. The full bath has access at either end and is near a large linen closet.
- Related Carriage House Plans: For a larger version, see 69394AM. And for a smaller version see 69395AM.
- If you like this plan, you'll like the main house that goes with it - 69078AM.

Style: Carriage, Garage

Total Living Area: 908

2nd Flr.: 908

Total Square Feet: 1,987 sq. ft.

Detached Garage: 3 Car, 1,079 sq. ft.

Bedrooms: 2

Full Bathrooms: 1

Width: 41'

Depth: 33'

Maximum Ridge Height: 26'

Exterior Walls: 2x6

Ceiling Height:

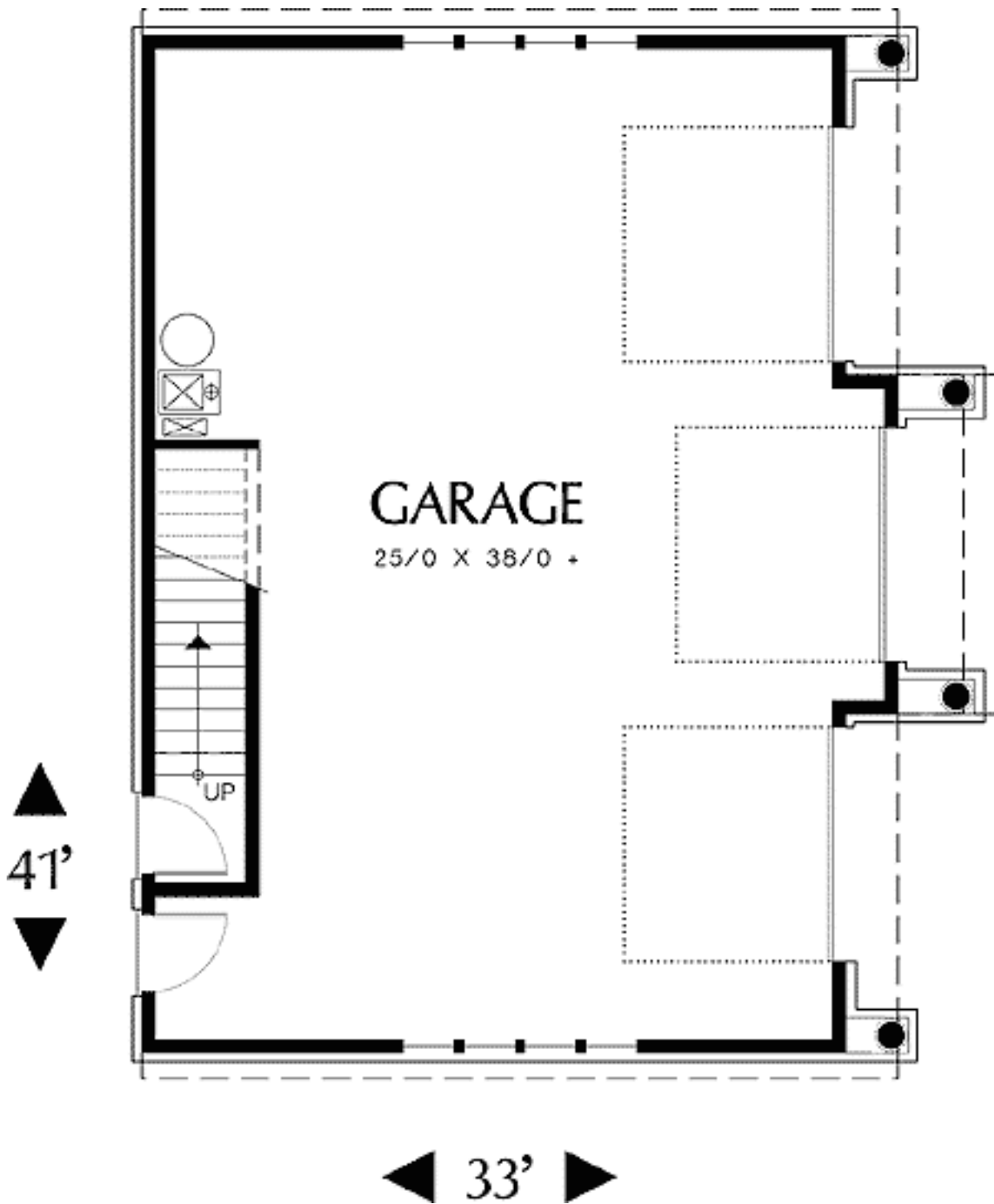
2nd Floor: 8'

Standard Foundations: Slab

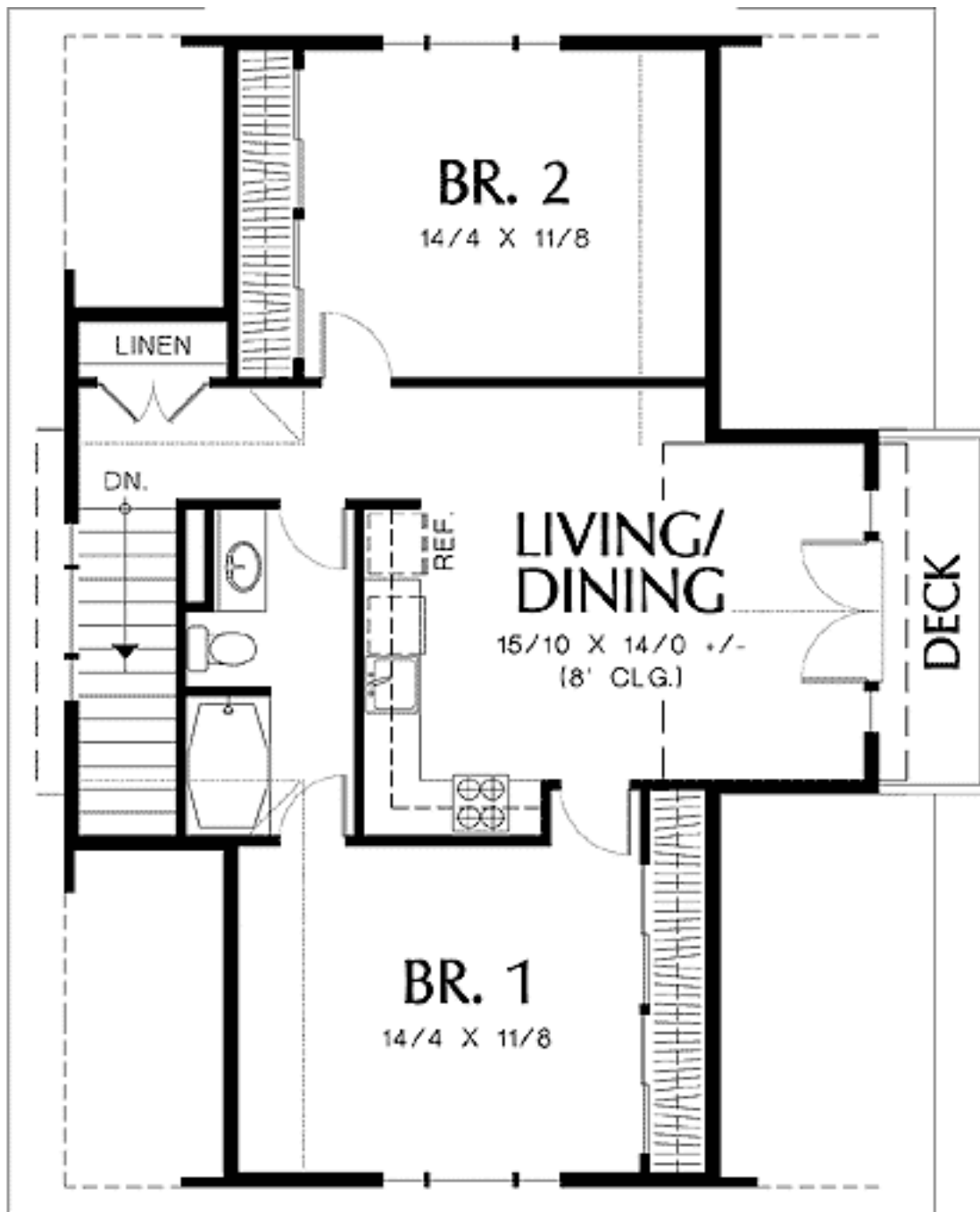
Special Features: Photo Gallery, CAD Available, PDF, Narrow Lot

One Set	Five Sets	Eight Sets	Reproducible	PDF File	CAD
\$475	\$550	\$595	\$800	\$800	\$1,350

Main Level



2nd Level



Photo



Photo #2

Slightly modified by owner



Photo #3



Rear View

