

Architectural Designs ...selling quality house plans for over 30 years.

Plan W21542DR



House plans are Copyright © 2009 by our architects and designers.

Style: Canadian, European, Metric, Southern

Total Living Area: 3361

Main Flr.: 1760

2nd Flr.: 1601

Bonus: 468 sq. ft.

Total Square Feet: 4,650 sq. ft.

Attached Garage: 2 Car, 821 sq. ft.

Bedrooms: 3

Full Bathrooms: 2

Half Bathrooms: 1

Width: 71'

Depth: 49'

Maximum Ridge Height: 42'6"

Exterior Walls: 2x6

Ceiling Height:

Main Floor: 9'

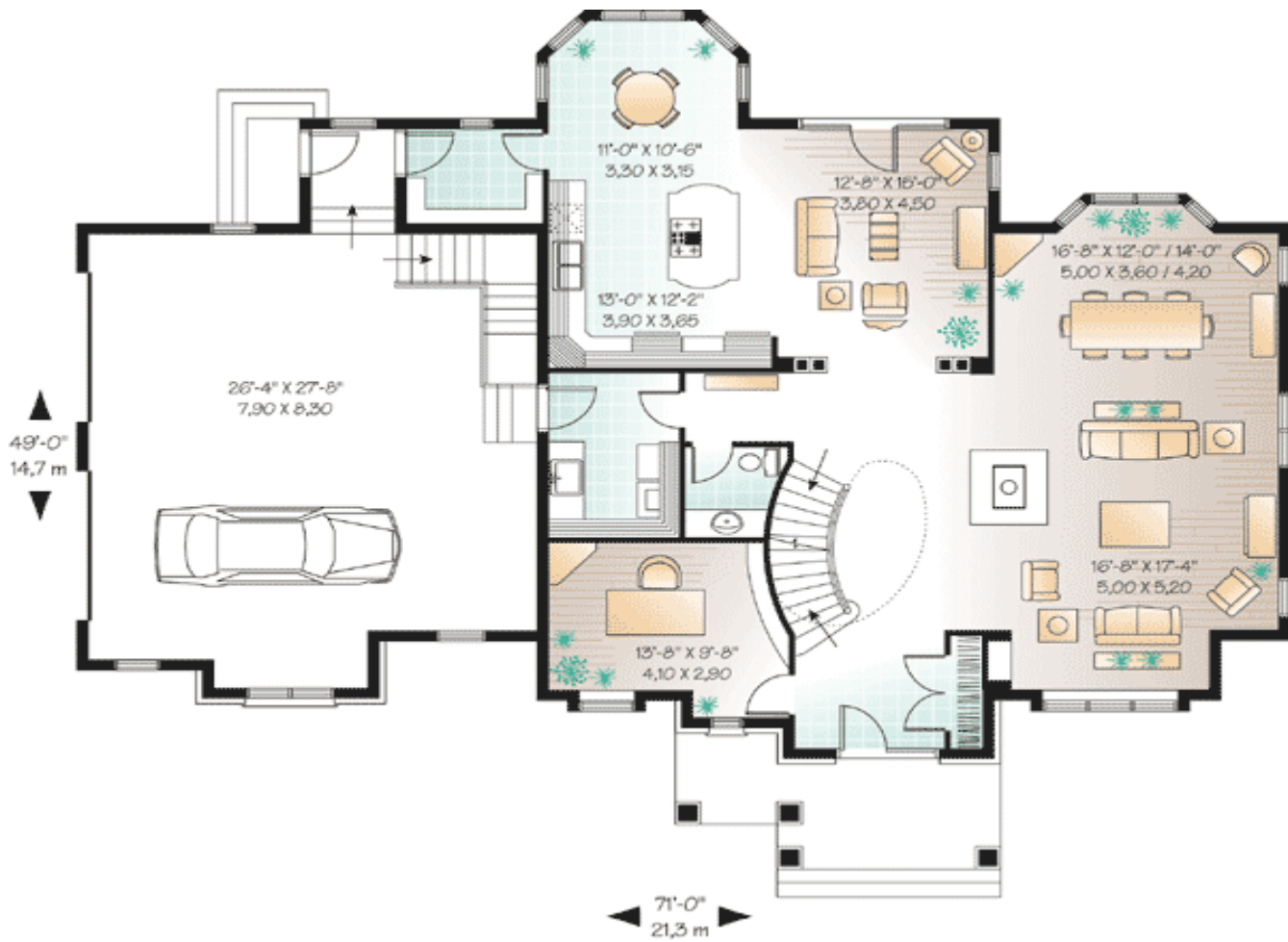
Standard Foundations: Basement

Alternate Foundations: Slab (\$295), Crawl (\$295)

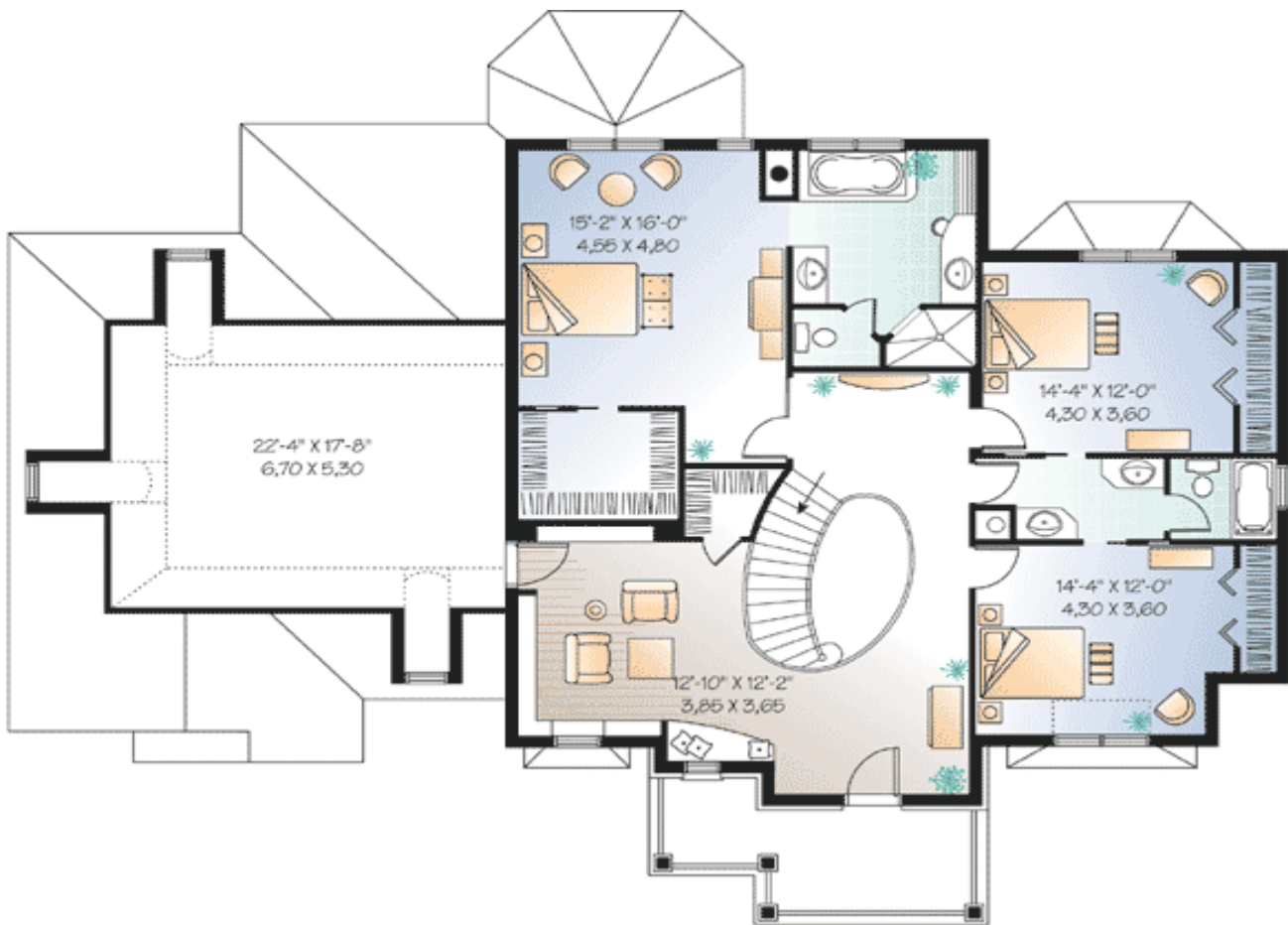
Special Features: Bonus Room, PDF, CAD Available

One Set	Five Sets	Eight Sets	Reproducible	PDF File	CAD
\$849	\$889	\$919	\$1,099	\$1,099	\$1,820

Main Level



2nd Level



Rear View

